



PRICED FROM
\$658,900

 2,518 - 2,886 Sq Ft

 4 - 5 Beds

 3 - 4 Baths

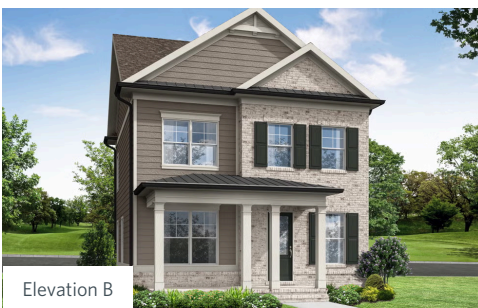
 2 Car Garage

 2.0 - 3.0 Story

-
- Flexible home, designed for modern living
- Thoughtfully planned living space
- Open-concept first floor featuring an inviting family room, dining area, and kitchen
- Well-appointed kitchen with generous counter space and seamless flow for entertaining
- Main-level guest suite with full bath, ideal for visitors, a private home office, or multi-generational living
- Welcoming foyer entry and abundant storage throughout

[Read More Online](#)

Available Elevations



Elevation B



Elevation D

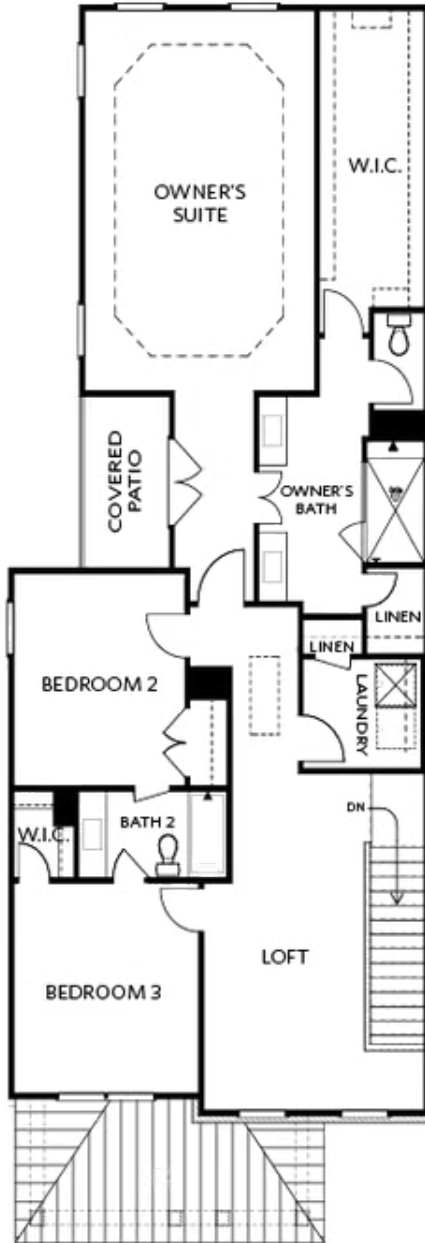


Elevation E



Want to Know More
About This Home?

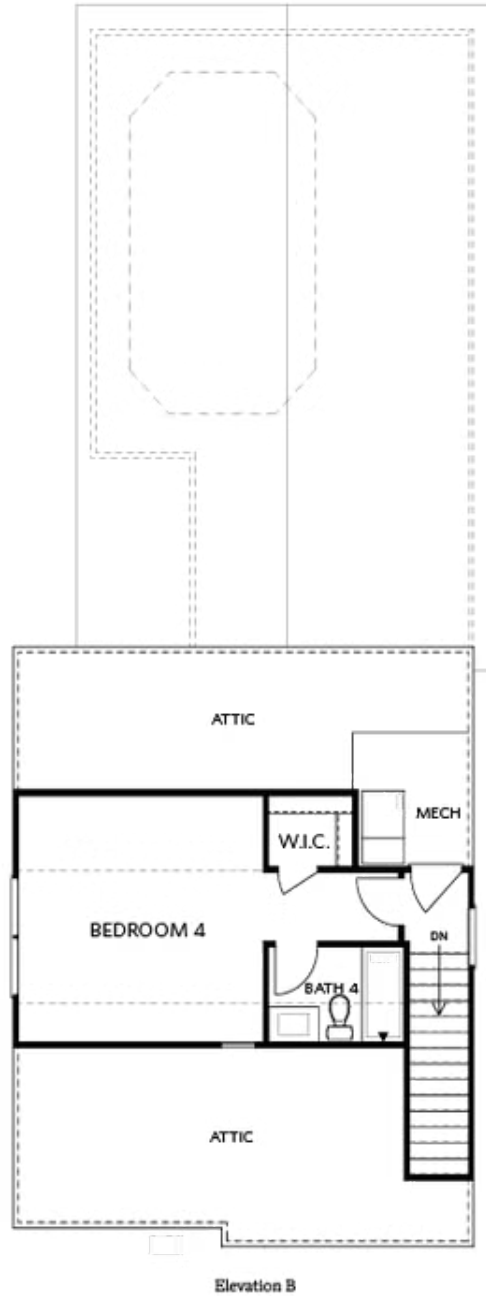
CONTACT OUR COMMUNITY SALES MANAGER
Call Us @ 678.424.6275



Elevation B

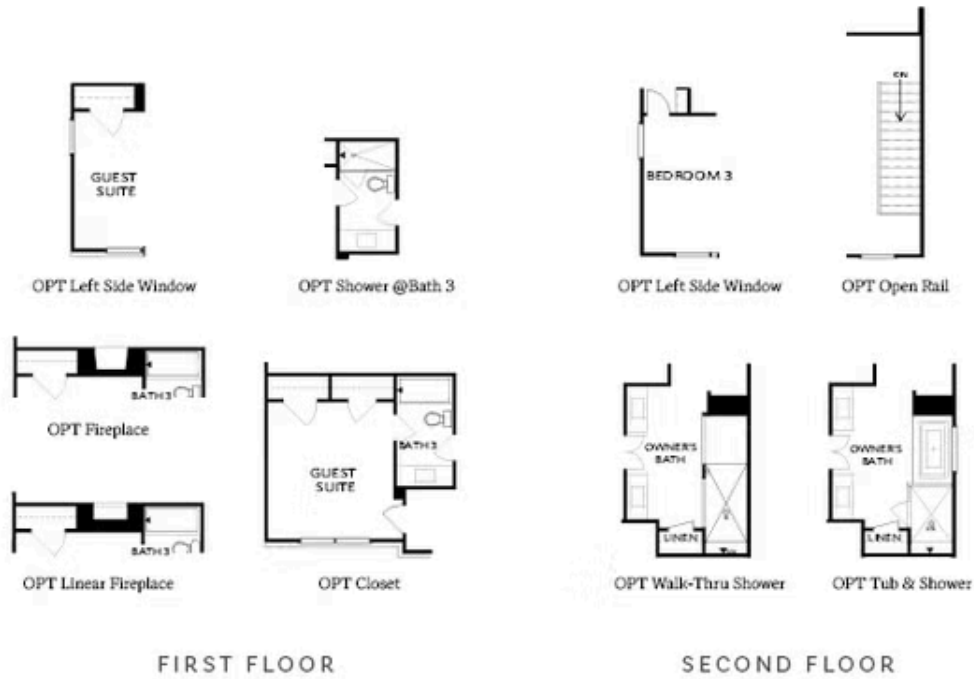
Want to Know More
About This Home?

CONTACT OUR COMMUNITY SALES MANAGER
Call Us @ 678.424.6275



Want to Know More
About This Home?

CONTACT OUR COMMUNITY SALES MANAGER
Call Us @ 678.424.6275



Want to Know More
 About This Home?

CONTACT OUR COMMUNITY SALES MANAGER
 Call Us @ 678.424.6275