




PRICED FROM
\$699,900

 2,594 - 2,764 Sq Ft

 3 - 5 Beds

 2.5 - 3 Baths

 2 - 3 Car Garage

 2.0 Story

- Two-Story Home Design with an open, light-filled main level
- Gourmet Kitchen with Center Island overlooking the dining and family rooms
- Owner's Suite on the Main Level featuring dual vanities and an oversized walk-in closet
- Open Main-Level Living Areas ideal for entertaining and everyday living
- Upper-Level Secondary Bedrooms providing privacy and separation of space
- Open Loft Area offering flexible living or lounge space
- Front Porch and Rear Patio extending everyday living outdoors

2 Car Garage

[Read More Online](#)

Available Elevations

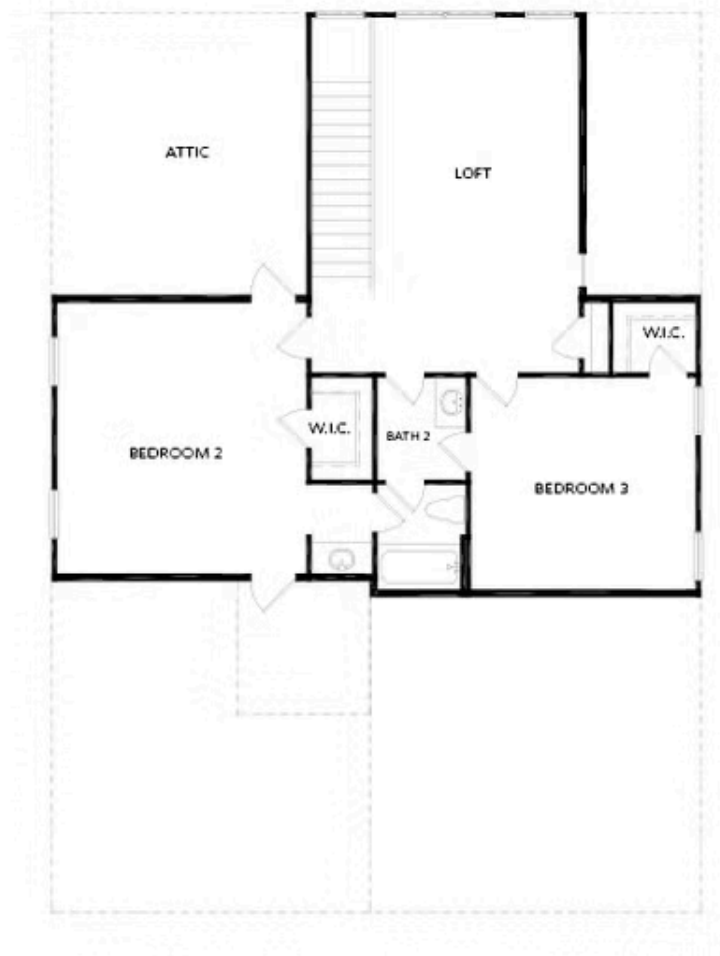




Elevation A

Want to Know More
About This Home?

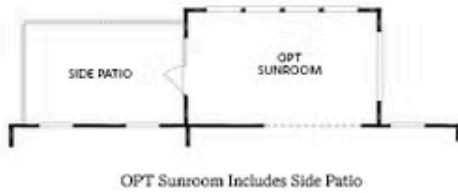
CONTACT OUR COMMUNITY SALES MANAGER
Call Us @ 678.424.6275



Elevation A

Want to Know More
About This Home?

CONTACT OUR COMMUNITY SALES MANAGER
Call Us @ 678.424.6275



*Only Available When OPT Sunroom Selected



OPT Owner's Walk-In Shower



OPT Butler's Pantry



OPT Fireplace

Want to Know More
 About This Home?

CONTACT OUR COMMUNITY SALES MANAGER
 Call Us @ 678.424.6275



Want to Know More
About This Home?

CONTACT OUR COMMUNITY SALES MANAGER
Call Us @ 678.424.6275