








-  3,472 - 5,336 Sq Ft
-  5 - 6 Beds
-  4 - 5 Baths
-  2 Car Garage
-  2.0 - 3.0 Story

- Expansive Two-Story Home Design with thoughtfully defined living spaces
- Main-Level Guest Bedroom or Home Office offering flexibility for everyday living
- Gourmet Kitchen with Center Island overlooking the family room and breakfast area
- Spacious Separate Dining Room ideal for formal gatherings and entertaining
- Luxurious Owner's Retreat featuring an elegant bath with distinctive dual vanities
- His and Her Walk-In Closets creating a true private suite experience
- Upper-Level Secondary Bedrooms with private or shared full bath options

• Front-Covered Backyard Deck and Patio extending the home's living space outdoors

[Read More Online](#)

Available Elevations





Elevation A & B

Want to Know More
About This Home?

CONTACT OUR COMMUNITY SALES MANAGER



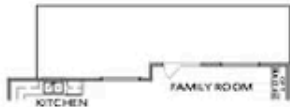
Elevation A & B

Want to Know More
About This Home?

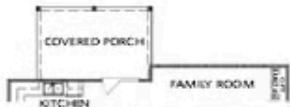
CONTACT OUR COMMUNITY SALES MANAGER



OPT Owner's Walk-In Shower



OPT Extended Porch & Awning



OPT Covered Porch



OPT Sunroom; OPT Patio/Deck
OPT Fireplace on Sunroom



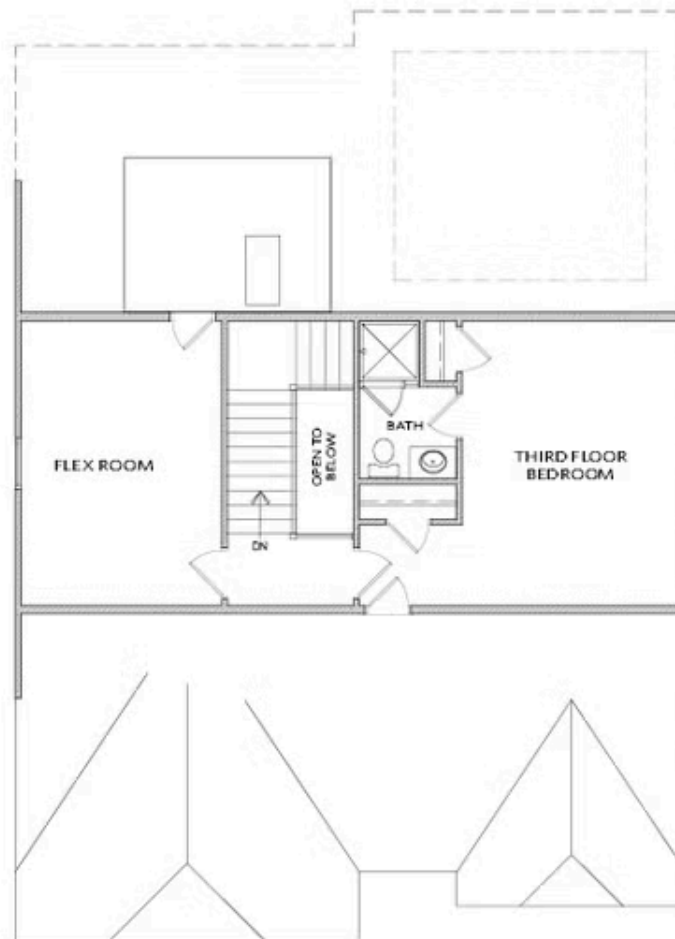
OPT Extended Kitchen



OPT Extended Kitchen w. OPT Sunroom &
OPT Patio/Deck

Want to Know More
About This Home?

CONTACT OUR COMMUNITY SALES MANAGER



*ONLY Available on a Slab Home

Want to Know More
About This Home?

CONTACT OUR COMMUNITY SALES MANAGER