




PRICED FROM
\$658,900

 2,573 - 2,983 Sq Ft

 4 - 5 Beds

 3.5 - 4.5 Baths

 2 Car Garage

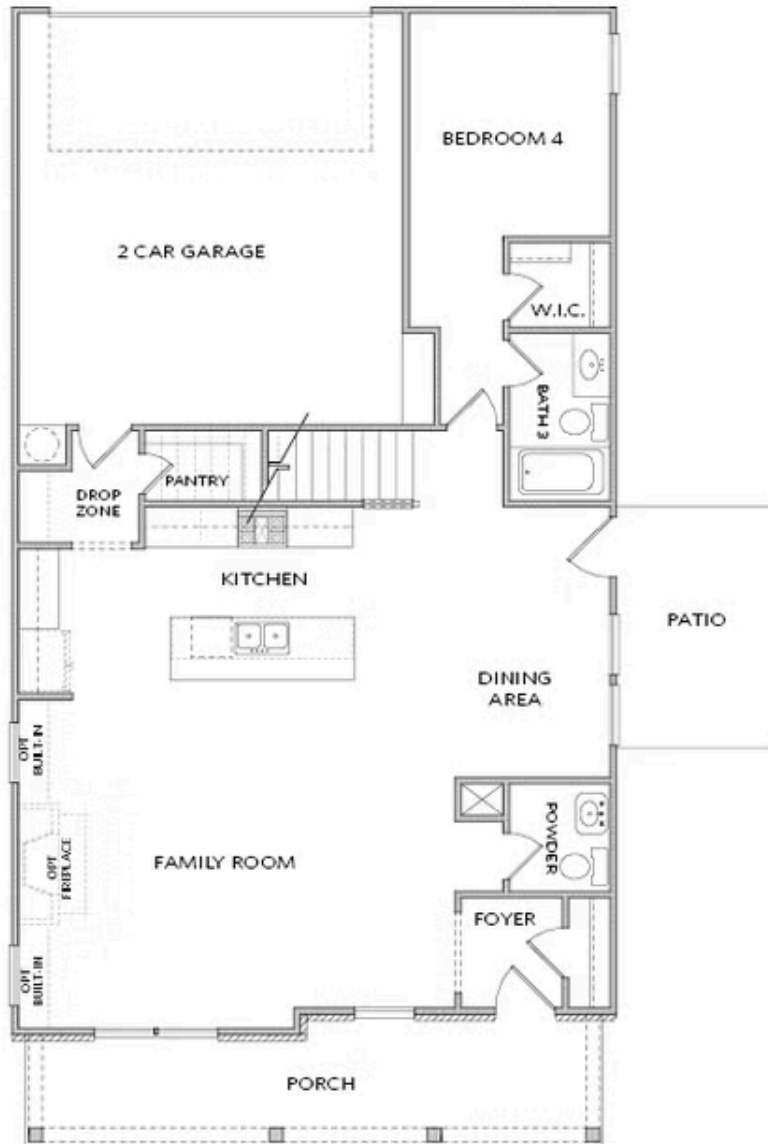
 2.0 - 3.0 Story

-
- Spacious home, offering flexible living for growing households
- Thoughtfully designed living space
- Open-concept main level featuring a large family room, dining area, and kitchen ideal for entertaining
- Chef-inspired kitchen with pantry, ample cabinetry, and seamless flow to the dining area
- Main-level bedroom and full bath—perfect for guests, a home office, or multi-generational living
- Convenient drop zone entry from the garage for everyday organization

[Read More Online](#)

Available Elevations

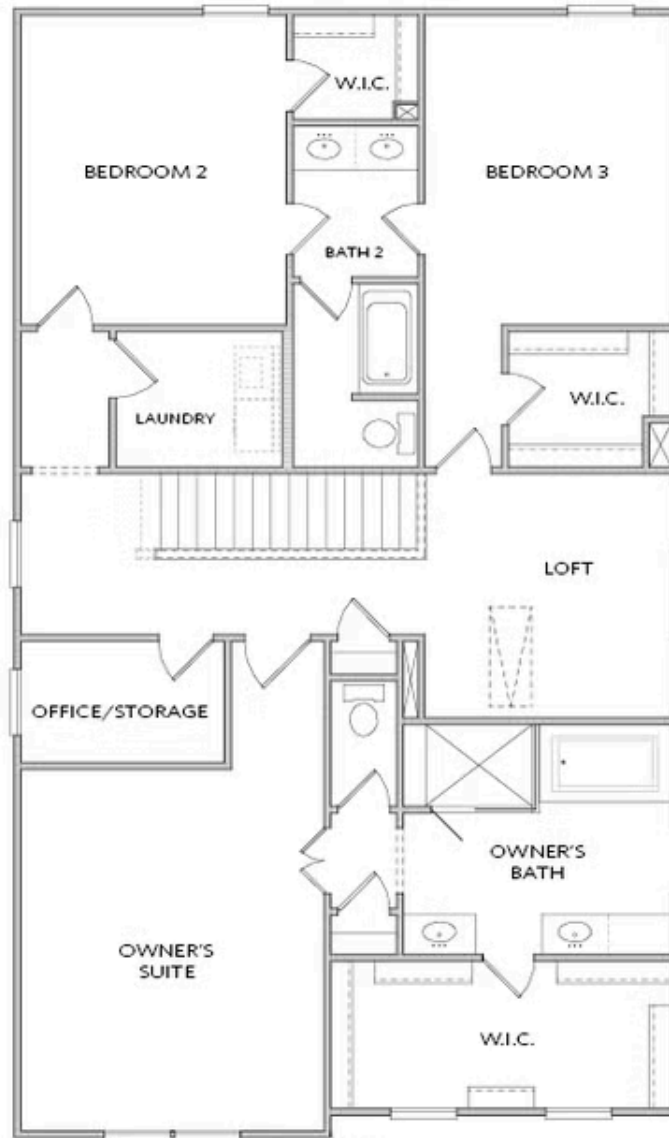




Elevation A

Want to Know More
About This Home?

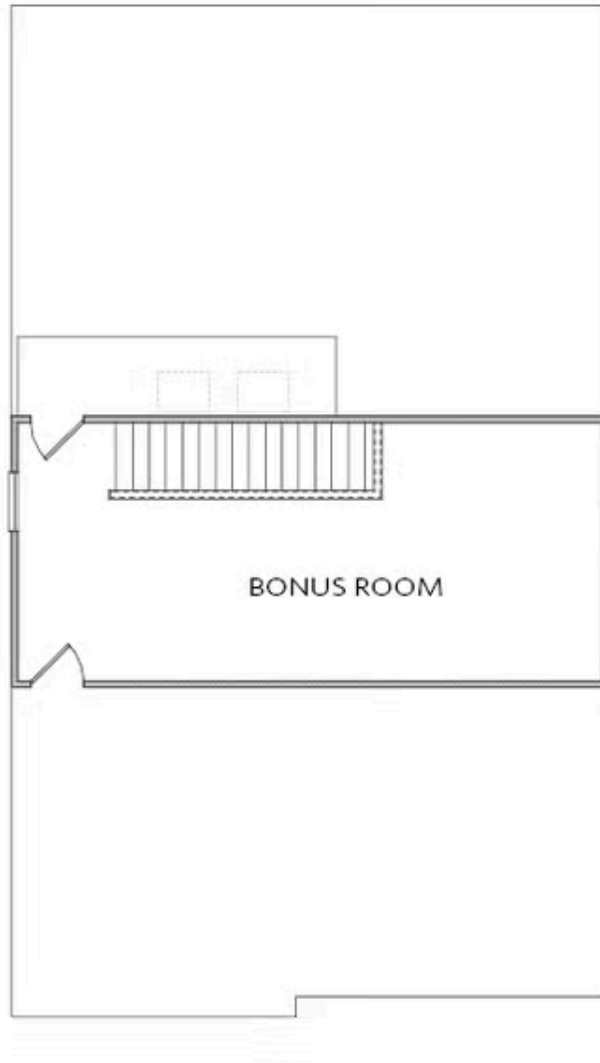
CONTACT OUR COMMUNITY SALES MANAGER
Call Us @ 678.424.6275



Elevation A

Want to Know More
About This Home?

CONTACT OUR COMMUNITY SALES MANAGER
Call Us @ 678.424.6275



OPT THIRD FLOOR

Want to Know More
About This Home?

CONTACT OUR COMMUNITY SALES MANAGER
Call Us @ 678.424.6275



Want to Know More
About This Home?

CONTACT OUR COMMUNITY SALES MANAGER
Call Us @ 678.424.6275