




PRICED FROM
\$681,900

 2,454 - 2,676 Sq Ft

 4 - 5 Beds

 2.5 - 4 Baths

 2 Car Garage

 2.0 Story

- Spacious Two-Story Home Design with an open, inviting main level
- Gourmet Kitchen with Center Island overlooking the dining and family rooms
- Upper-Level Owner's Suite featuring dual vanities and an oversized walk-in closet
- Upper-Level Secondary Bedrooms offering privacy and separation of space
- Laundry Located on the Upper Level for everyday convenience
- Dedicated Home Office on the Main Level ideal for work-from-home needs
- Optional Main-Level Guest Suite with Full Bath (in lieu of living room, powder room, and home office)
- Deck or Patio Options extending everyday living outdoors

[Read More Online](#)

Available Elevations



Elevation A



Elevation B



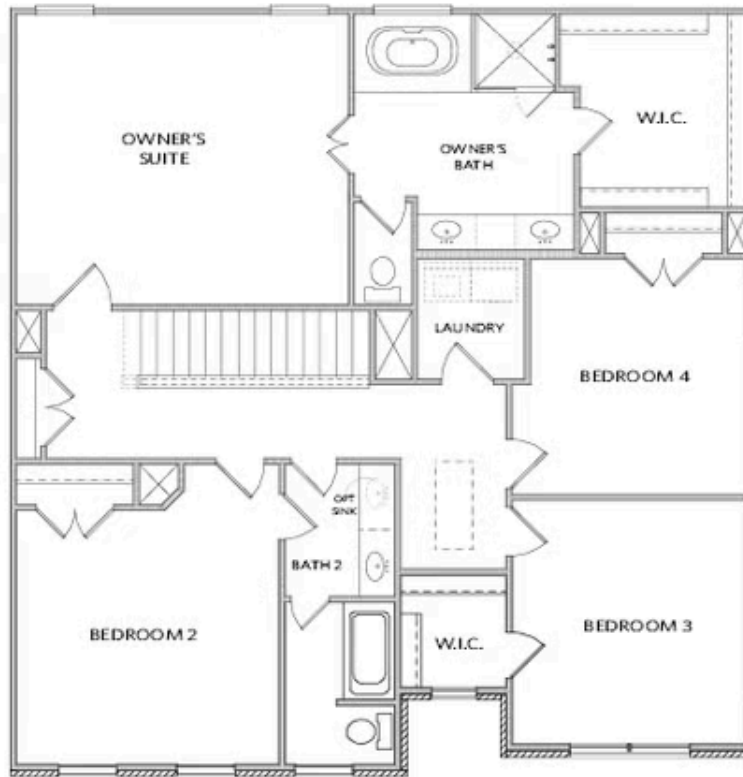
Elevation C



Elevations A & B

Want to Know More
About This Home?

CONTACT OUR COMMUNITY SALES MANAGER
Call Us @ 678.424.6275



Elevations A & B

Want to Know More
About This Home?

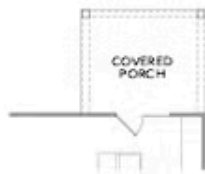
CONTACT OUR COMMUNITY SALES MANAGER
Call Us @ 678.424.6275



Layout When on a Basement



OPT Guest Suite w. Full Bath
 into Living RM, Powder RM & Home Office



OPT Covered Porch



OPT Sunroom w. Deck/Patio

Want to Know More
 About This Home?

CONTACT OUR COMMUNITY SALES MANAGER
 Call Us @ 678.424.6275



OPT Home Office 2 w. Larger W.I.C. &
 Larger Laundry flo Bedroom 4



OPT Owner's Walk-In Shower



OPT Bath 3 at Bedroom 3
 *ONLY Available on Elevation B

Want to Know More
 About This Home?

CONTACT OUR COMMUNITY SALES MANAGER
 Call Us @ 678.424.6275