



PRICED AT  
**\$579,900**

 2164 Sq Ft

 4 Beds

 3.5 Baths

 2 Car Garage

 3.0 Story

~~ HOME OF THE MONTH here at Waterhaven ~~ Welcome to Waterhaven by The Providence Group ideally located between the energy of Cumming City Center and the natural beauty of Lake Lanier. The Grayson III, a three-story END UNIT townhome, offers exceptional natural light, added privacy, and a thoughtfully designed layout perfect for modern living. Terrace Level is Versatile & Welcoming. Enter through a spacious foyer that sets an inviting tone from the moment you arrive. This level includes a full bedroom with a private bath ideal for guests, multigenerational living, a home office, or a peaceful retreat. Main Level is Bright, Open & Perfect for Entertaining. The open concept living with fireplace in family room and dining areas are filled with natural light, featuring sweeping arched windows that create an elevated architectural focal point. The designer kitchen. Sweet Juliette balcony off the Dining Room perfect for your plant collection. This spacious layout supports both everyday living and effortless entertaining. Upper-Level Comfort, Privacy & Convenience. The third floor is thoughtfully planned with a balance of luxury and functionality. The primary suite offers abundant light, a generous walk-in closet, and a spa inspired bathroom with separate walk-in shower, Decked soaking tub, ...

**Want to Know More  
About This Home?**

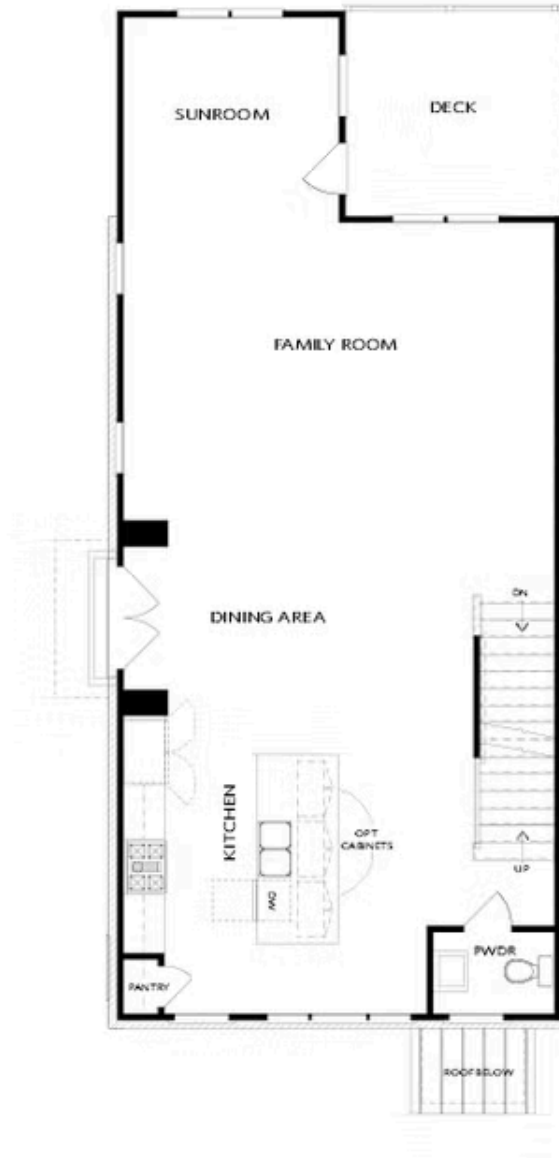
CONTACT OUR COMMUNITY SALES MANAGER  
Call Us @ 678.424.6275



Elevations E & F

Want to Know More  
About This Home?

CONTACT OUR COMMUNITY SALES MANAGER  
Call Us @ 678.424.6275



Elevations E & F

Want to Know More  
About This Home?

CONTACT OUR COMMUNITY SALES MANAGER  
Call Us @ 678.424.6275



Elevations E & F

Want to Know More  
About This Home?

CONTACT OUR COMMUNITY SALES MANAGER  
Call Us @ 678.424.6275



Want to Know More  
 About This Home?

CONTACT OUR COMMUNITY SALES MANAGER  
 Call Us @ 678.424.6275