



PRICED AT
\$594,050

 2400 Sq Ft

 4 Beds

 3.5 Baths

 2 Car Garage

 3.0 Story

CLOSE IN 30 DAYS ~~~ \$7500 promotion can be used toward closing costs or appliance options when you use a TPG Preferred Lender. Welcome to Waterhaven ~~ thoughtfully designed around the things that matter most to you. Homesite 326 features The Benton III - a 4 bedroom/3.5 bath 3 story townhome. Enter the terrace level into a spacious foyer where you can create a beautiful area to welcome your guests. Double doors open to a full bedroom and bath, perfect for an in-law suite. Head upstairs to the main floor kitchen, dining and family room. Slate stained cabinets with 4x12 white tile backsplash creates a modern feel. A large walk in pantry holds all your kitchen staples and an oversized island gives you ton of prep space. Stainless GE appliances finish off the space. Hard Surface flooring sweeps throughout the main level into dining and family room. A cozy fireplace with stacked white quartzite is the focal point while double doors open to a covered porch off the family room. Tucked away behind the kitchen is a sunroom with access to the covered deck. The upper floor hosts the primary suite and 2 secondary bedrooms and shared bath. The spacious ...

**Want to Know More
About This Home?**

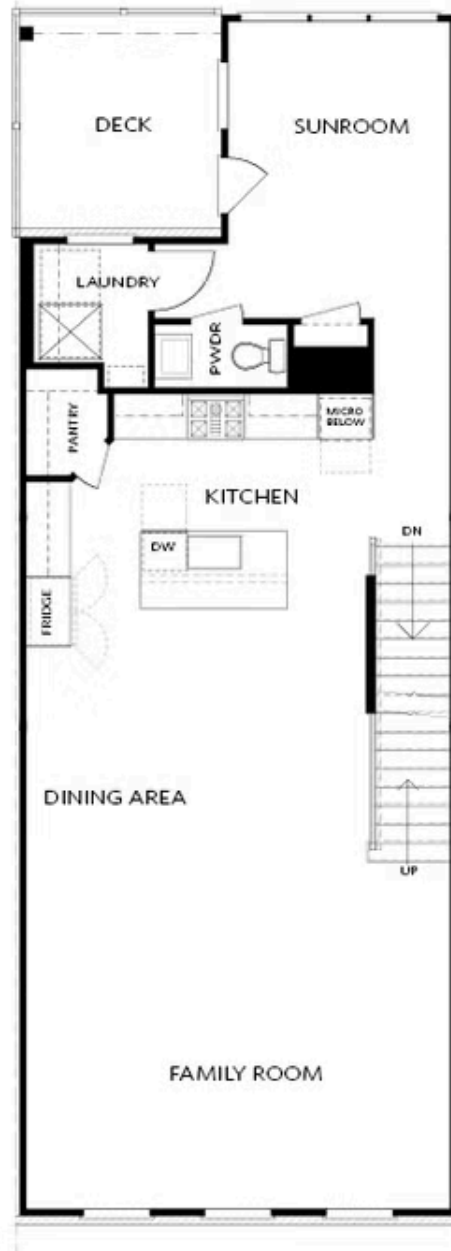
CONTACT OUR COMMUNITY SALES MANAGER
Call Us @ 678.424.6275



Elevation 03

Want to Know More
About This Home?

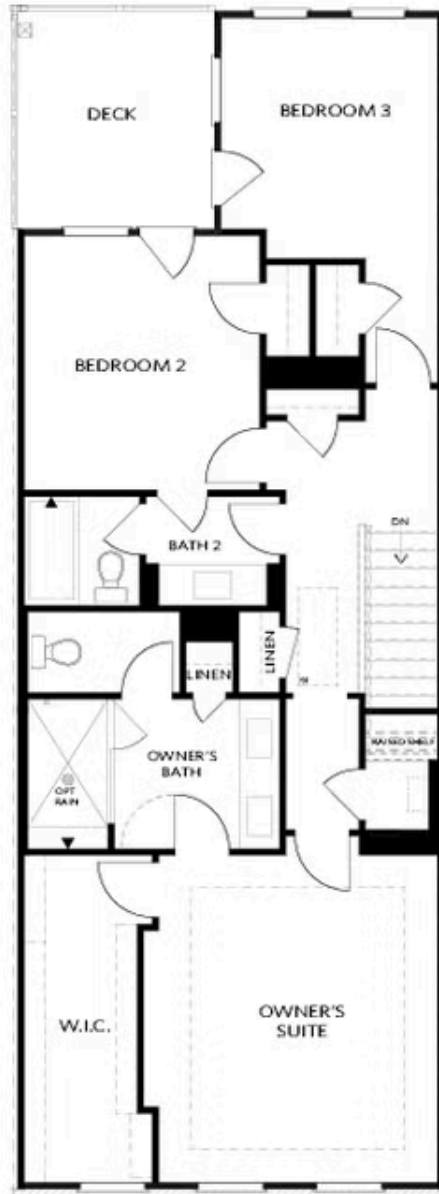
CONTACT OUR COMMUNITY SALES MANAGER
Call Us @ 678.424.6275



Elevation O3

Want to Know More
About This Home?

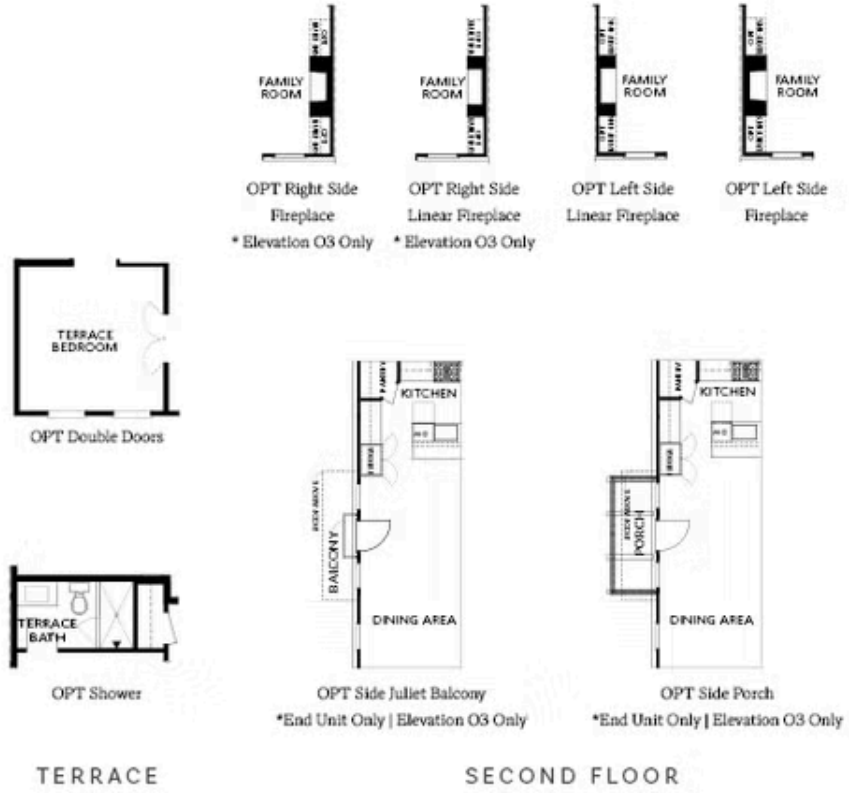
CONTACT OUR COMMUNITY SALES MANAGER
Call Us @ 678.424.6275



Elevation U

Want to Know More
About This Home?

CONTACT OUR COMMUNITY SALES MANAGER
Call Us @ 678.424.6275



Want to Know More
 About This Home?

CONTACT OUR COMMUNITY SALES MANAGER
 Call Us @ 678.424.6275



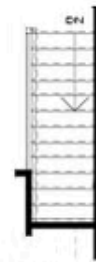
OPT Walk-Through Shower



OPT Freestanding Tub/Shower



OPT Decked Tub/Shower



OPT Open Rail

THIRD FLOOR

Want to Know More
About This Home?

CONTACT OUR COMMUNITY SALES MANAGER
Call Us @ 678.424.6275