



PRICED AT
\$591,400

 2400 Sq Ft

 4 Beds

 3.5 Baths

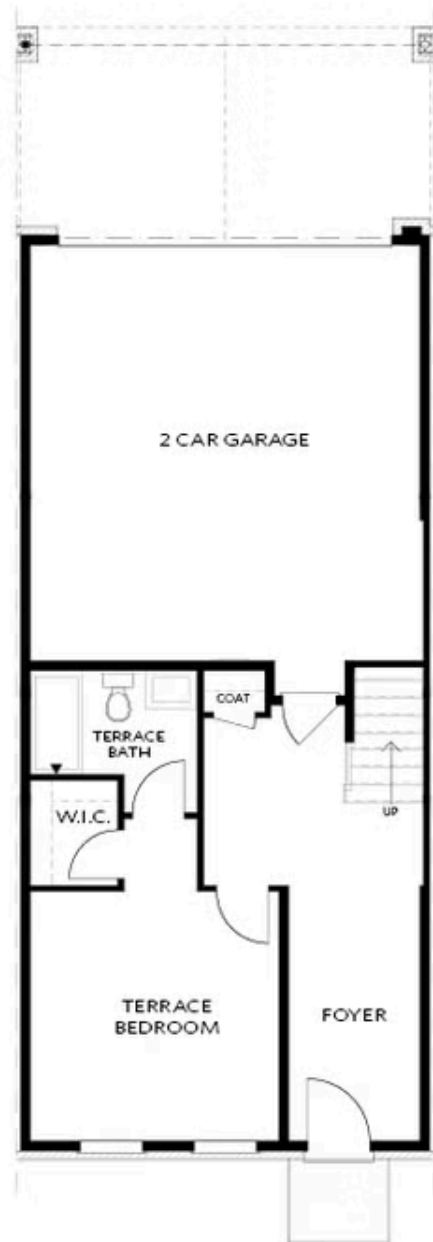
 2 Car Garage

 3.0 Story

WATERHAVEN GRAND OPENING! \$7500 promotion can be used toward closing costs or appliance options when you use a TPG Preferred Lender. Welcome to Waterhaven by The Providence Group centrally located between Cumming City Center and the shores of Lake Lanier! Waterhaven is thoughtfully designed around the things that matter most to you. The Benton III @ homesite 325 features a 4 bedroom/3.5 bath 3 story townhome. As you enter the terrace level, you find a welcoming foyer that leads to double doors which take you into the perfect in-law or guest suite complete w/full bath for ultimate privacy. As you ascend the stair to the main floor, you are greeted with a beautifully designed kitchen offering white 42" upper cabinets, 4x12 white tile backsplash and Calacatta Sierra quartz countertops, giving you a clean palette for decorating. The oversized island gives you space for casual dining while the large walk in pantry keeps your kitchen staples out of sight. Stainless GE appliances finish off the space. 10' ceilings & Hard Surface flooring sweeps throughout the main level and into the dining and family room. Double doors open to a covered front porch off the family room making it easy to step outside ...

**Want to Know More
About This Home?**

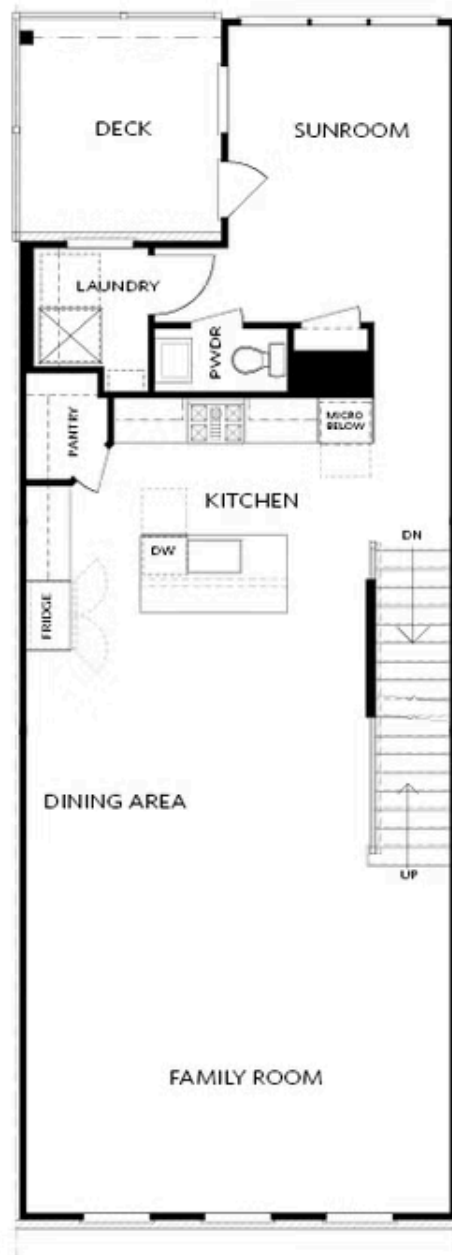
CONTACT OUR COMMUNITY SALES MANAGER
Call Us @ 678.424.6275



Elevation 03

Want to Know More
About This Home?

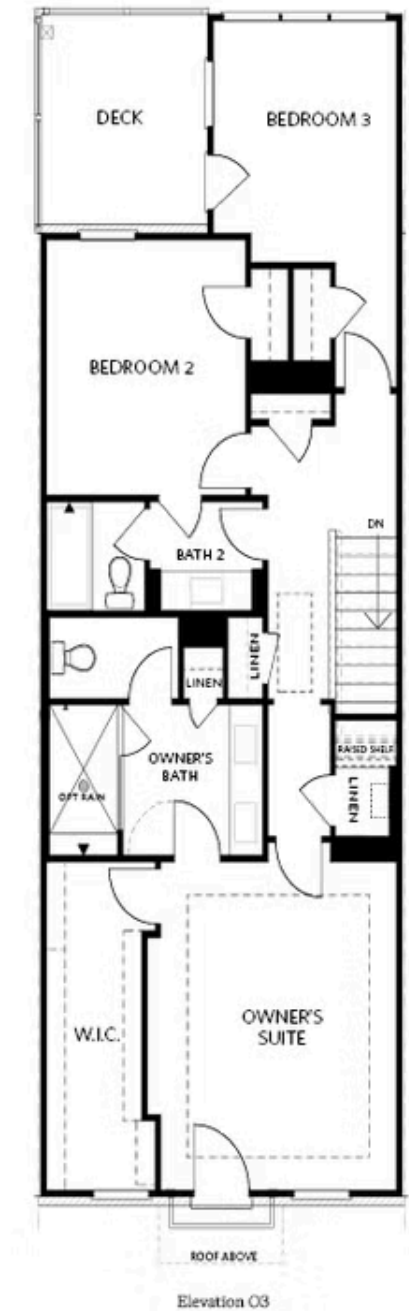
CONTACT OUR COMMUNITY SALES MANAGER
Call Us @ 678.424.6275



Elevation 03

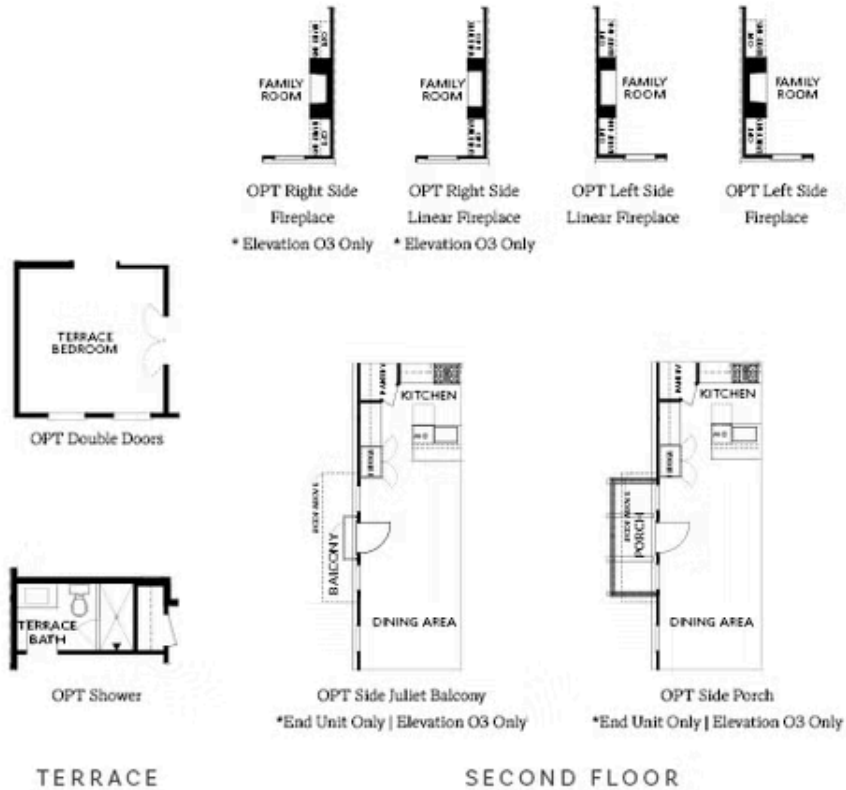
Want to Know More
About This Home?

CONTACT OUR COMMUNITY SALES MANAGER
Call Us @ 678.424.6275



Want to Know More
About This Home?

CONTACT OUR COMMUNITY SALES MANAGER
Call Us @ 678.424.6275



Want to Know More
About This Home?

CONTACT OUR COMMUNITY SALES MANAGER
Call Us @ 678.424.6275



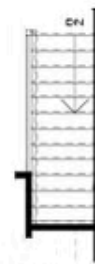
OPT Walk-Through Shower



OPT Freestanding Tub/Shower



OPT Decked Tub/Shower



OPT Open Rail

THIRD FLOOR

Want to Know More
About This Home?

CONTACT OUR COMMUNITY SALES MANAGER
Call Us @ 678.424.6275