



PRICED AT  
**\$578,200**

 2400 Sq Ft

 4 Beds

 3.5 Baths

 2 Car Garage

 3.0 Story

~~~ WATERHAVEN ~ MOVE IN READY! Welcome to The Benton III @ homesite 325 featuring 2 covered front porches and 2 rear decks with 4 bedroom/3.5 baths. As you enter the terrace level, you find a welcoming foyer that leads to double doors which take you into the perfect in-law or guest suite complete w/full bath for ultimate privacy. As you ascend the stairs to the main floor, you are greeted with a beautifully designed kitchen offering white 42" upper cabinets, 4x12 white tile backsplash and Calacatta Sierra quartz countertops, giving you a clean palette for decorating. The oversized island gives you space for casual dining while the large walk in pantry keeps your kitchen staples out of sight. Stainless GE appliances finish off the space. 10' ceilings & Hard Surface flooring sweeps throughout the main level and into the dining and family room. Double doors open to a covered front porch off the family room making it easy to step outside for a breath of fresh air. A sunroom is located behind the kitchen & is the perfect spot for a home office or reading room. Head to the upper floor to bedroom retreats! The primary bedroom has plenty of ...

**Want to Know More  
About This Home?**

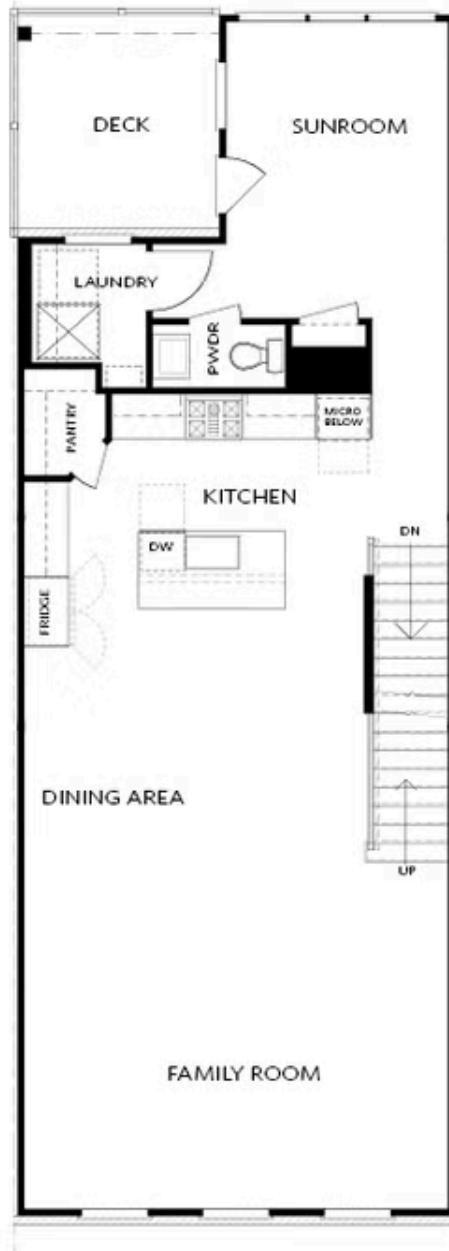
CONTACT OUR COMMUNITY SALES MANAGER  
Call Us @ 678.424.6275



Elevation 03

Want to Know More  
About This Home?

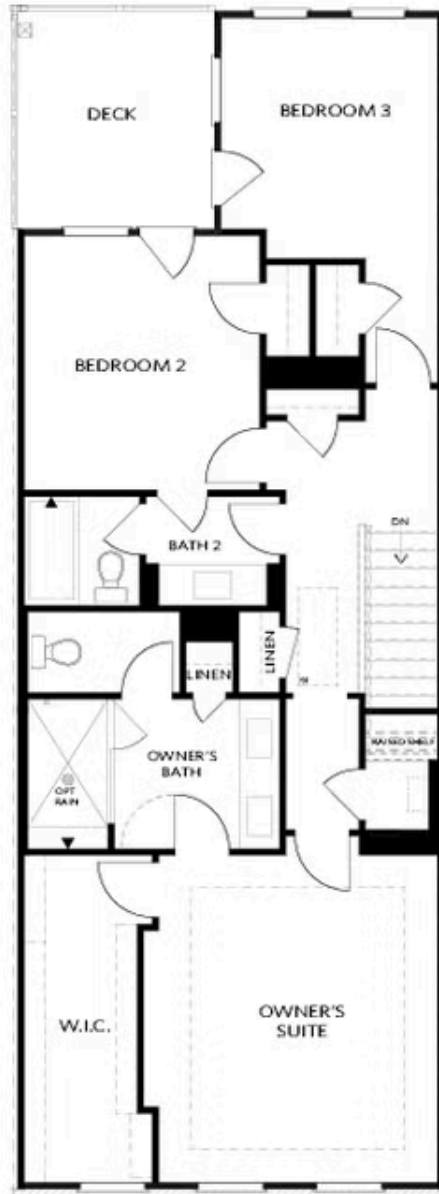
CONTACT OUR COMMUNITY SALES MANAGER  
Call Us @ 678.424.6275



Elevation 03

Want to Know More  
About This Home?

CONTACT OUR COMMUNITY SALES MANAGER  
Call Us @ 678.424.6275



Elevation U

Want to Know More  
About This Home?

CONTACT OUR COMMUNITY SALES MANAGER  
Call Us @ 678.424.6275



OPT Right Side  
 Fireplace

\* Elevation O3 Only



OPT Right Side  
 Linear Fireplace

\* Elevation O3 Only



OPT Left Side  
 Linear Fireplace



OPT Left Side  
 Fireplace

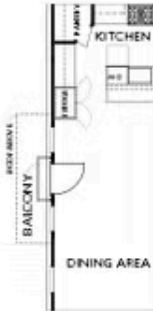


OPT Double Doors



OPT Shower

TERRACE



OPT Side Juliet Balcony

\*End Unit Only | Elevation O3 Only



OPT Side Porch

\*End Unit Only | Elevation O3 Only

SECOND FLOOR

Want to Know More  
 About This Home?

CONTACT OUR COMMUNITY SALES MANAGER  
 Call Us @ 678.424.6275



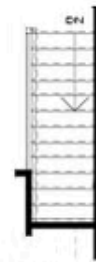
OPT Walk-Through Shower



OPT Freestanding Tub/Shower



OPT Decked Tub/Shower



OPT Open Rail

THIRD FLOOR

Want to Know More  
About This Home?

CONTACT OUR COMMUNITY SALES MANAGER  
Call Us @ 678.424.6275