






-  2,164 Sq Ft
-  4 Beds
-  3.5 Baths
-  2 Car Garage
-  3.0 Story

- Terrace-Entry Townhome Design with a welcoming foyer
- Main-Level Bedroom with Full Bath located on the terrace level - ideal for guests or a private home office
- Open-Concept Main Living Level designed for everyday living and entertaining
- Sunroom and Private Covered Deck located off the family room for seamless indoor-outdoor living
- Gourmet Kitchen featuring a large center island positioned at the front of the home
- Third-Level Owner's Suite offering privacy and separation from main living areas
- Owner's Suite at the Rear of the Home with a spacious walk-in closet

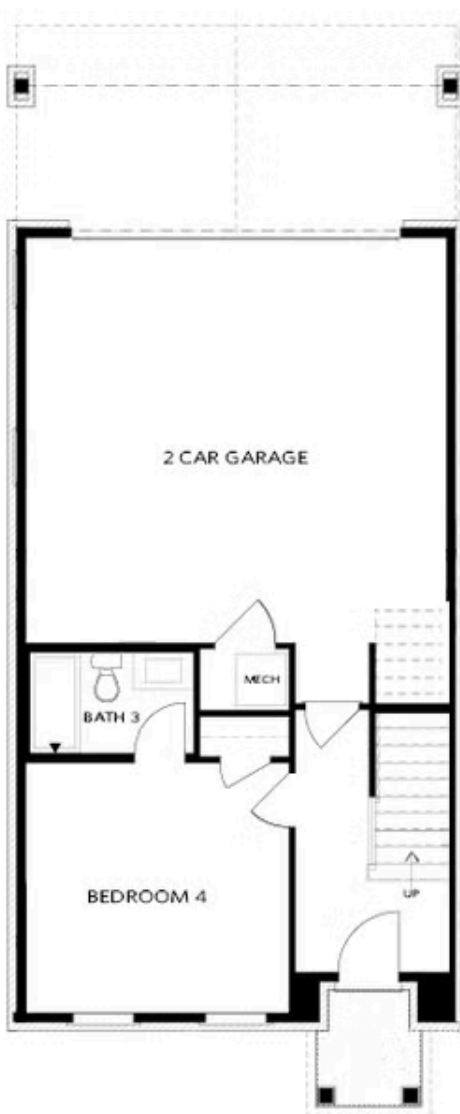
• Owner's Bath with dual vanities, walk-in shower, two linen closets, and a private water closet

[Read More Online](#)

Available Elevations



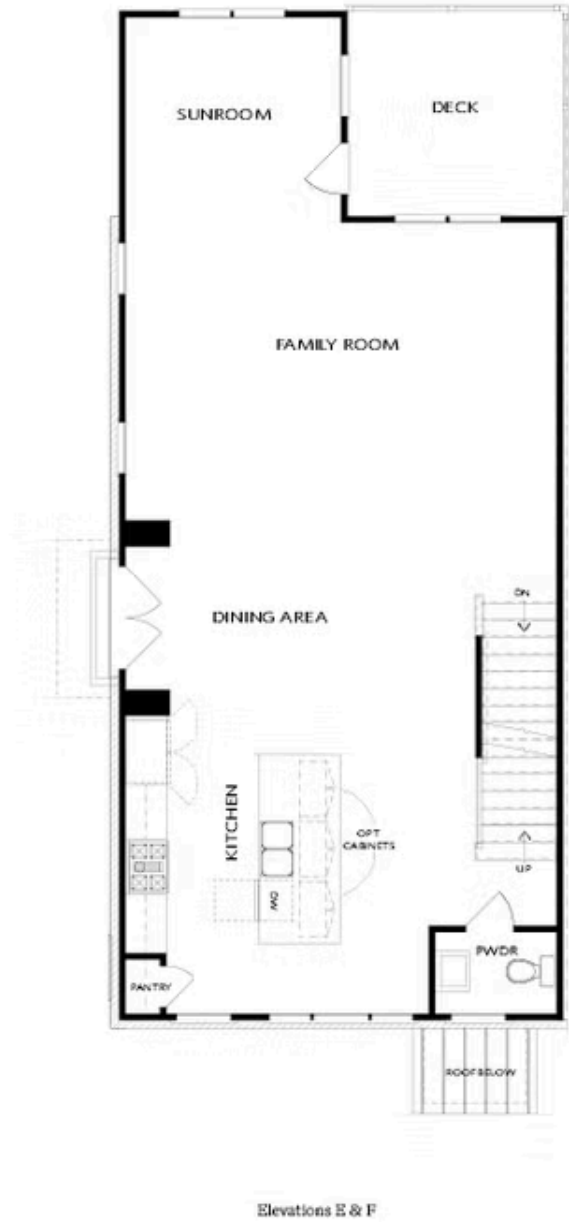
Grayson III - Benton III - Taylor I - Townhome Building



Elevations E & F

Want to Know More
About This Home?

CONTACT OUR COMMUNITY SALES MANAGER



Want to Know More
About This Home?

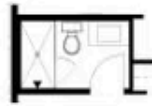
CONTACT OUR COMMUNITY SALES MANAGER



Elevations E & F

Want to Know More
About This Home?

CONTACT OUR COMMUNITY SALES MANAGER



OPT Shower Only



OPT Linear
Fireplace



OPT Fireplace



OPT Open Rail

TERRACE

SECOND FLOOR



OPT Freestanding Tub/Shower



OPT Decked Tub/Shower



OPT Walk-Through Shower

THIRD FLOOR

Want to Know More
About This Home?

CONTACT OUR COMMUNITY SALES MANAGER