



PRICED FROM  
**\$564,900**

 2,164 Sq Ft

 4 Beds

 3.5 Baths

 2 Car Garage

 3.0 Story

- Terrace-Entry Townhome Design with a welcoming foyer
- Main-Level Bedroom with Full Bath located on the terrace level - ideal for guests or a private home office
- Open-Concept Main Living Level designed for everyday living and entertaining
- Sunroom and Private Covered Deck located off the family room for seamless indoor-outdoor living
- Gourmet Kitchen featuring a large center island positioned at the front of the home
- Third-Level Owner's Suite offering privacy and separation from main living areas
- Owner's Suite at the Rear of the Home with a spacious walk-in closet

• Owner's Bath with dual vanities, walk-in shower, two linen closets, and a private water closet

[Read More Online](#)

## Available Elevations



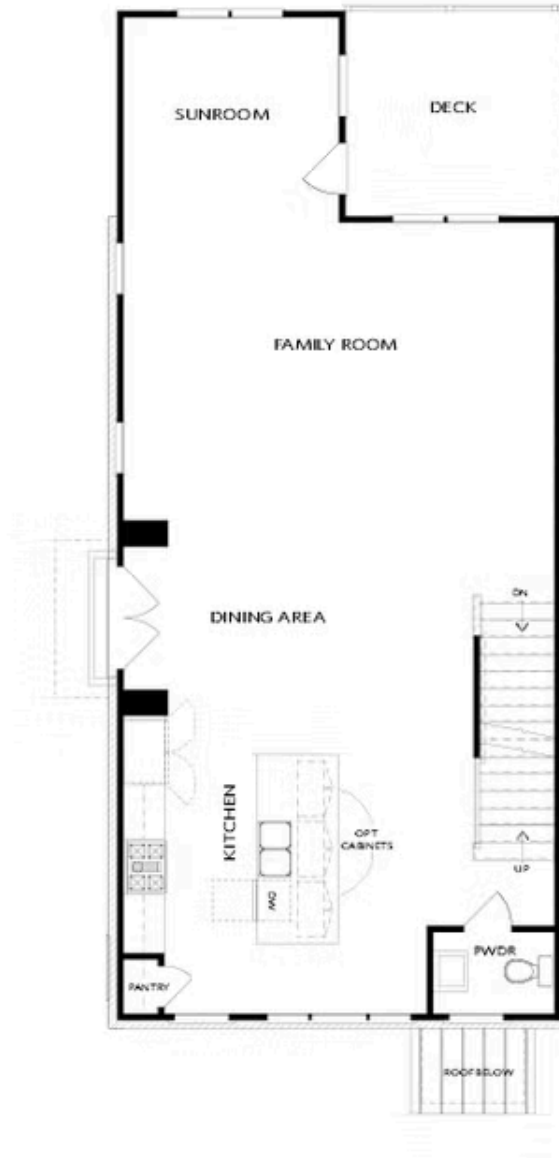
Grayson III - Benton III - Taylor I - Townhome Building



Elevations E & F

Want to Know More  
About This Home?

CONTACT OUR COMMUNITY SALES MANAGER  
Call Us @ 678.424.6275



Elevations E & F

Want to Know More  
About This Home?

CONTACT OUR COMMUNITY SALES MANAGER  
Call Us @ 678.424.6275



Elevations E & F

Want to Know More  
About This Home?

CONTACT OUR COMMUNITY SALES MANAGER  
Call Us @ 678.424.6275



Want to Know More  
 About This Home?

CONTACT OUR COMMUNITY SALES MANAGER  
 Call Us @ 678.424.6275