



PRICED AT
\$665,950

 2676 Sq Ft

 4 Beds

 3.5 Baths

 2 Car Garage

 3.0 Story

New Year, New Home, New You! Elevate your life in 2024 with a new home by The Providence Group and \$5,000 towards closing cost with one of our Preferred Lenders. Prime location, just one mile from downtown Duluth. 10' ceiling on the main level with 8'-foot interior doors. This height makes the eye go for miles. Beautiful foyer when you open the front door. This home design is a true definition of open concept living. If you love to cook or entertain, this is the home for you. You would not miss any of the fun or excitement from the kitchen to the massive rear deck. The kitchen will have stacked cabinets to the ceiling, giving your kitchen the most glamorous feel. Perfect office nook right off the family room. The owner's bedroom is so spacious and has a giant walk-in closet. A luxurious owners bath awaits with a tile shower and 2 vanities that are separated by a soaking tub. 2 Additional bedrooms upstairs with one full bath and laundry. The terrace level has endless possibilities with a great big bedroom with full bath which could easily be used as a media room, game room or fitness room. Also, ...

Want to Know More
About This Home?

CONTACT OUR COMMUNITY SALES MANAGER
Call Us @ 470.248.2103



Want to Know More
About This Home?

CONTACT OUR COMMUNITY SALES MANAGER
Call Us @ 470.248.2103



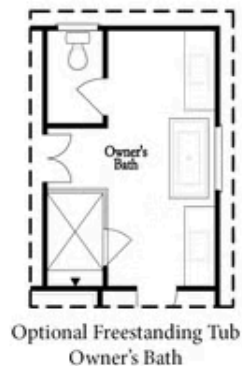
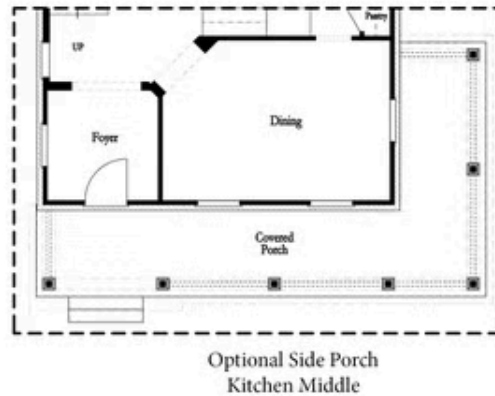
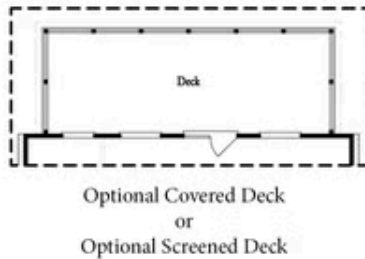
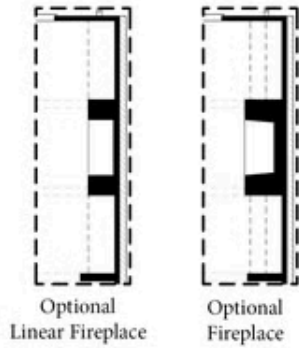
Want to Know More
About This Home?

CONTACT OUR COMMUNITY SALES MANAGER
Call Us @ 470.248.2103



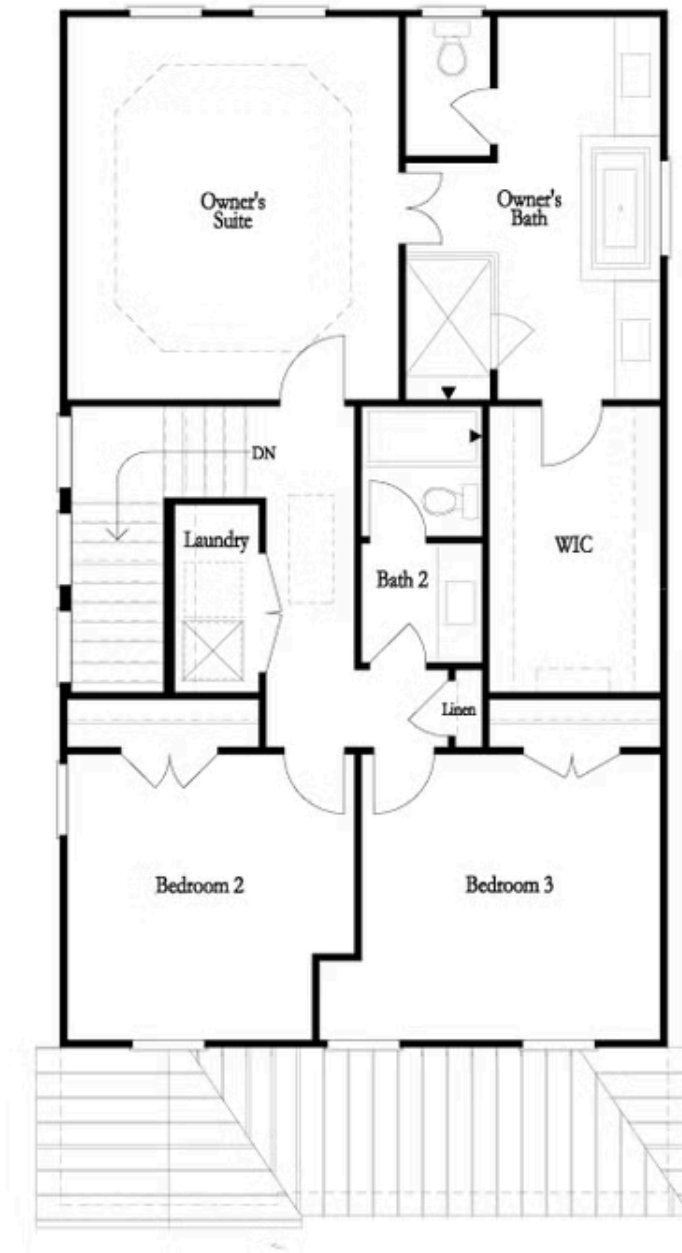
Want to Know More
About This Home?

CONTACT OUR COMMUNITY SALES MANAGER
Call Us @ 470.248.2103



Want to Know More
About This Home?

CONTACT OUR COMMUNITY SALES MANAGER
Call Us @ 470.248.2103



**Want to Know More
About This Home?**

CONTACT OUR COMMUNITY SALES MANAGER
Call Us @ 470.248.2103