



PRICED AT
\$672,400

 **2574 Sq Ft**

 **4 Beds**

 **3.5 Baths**

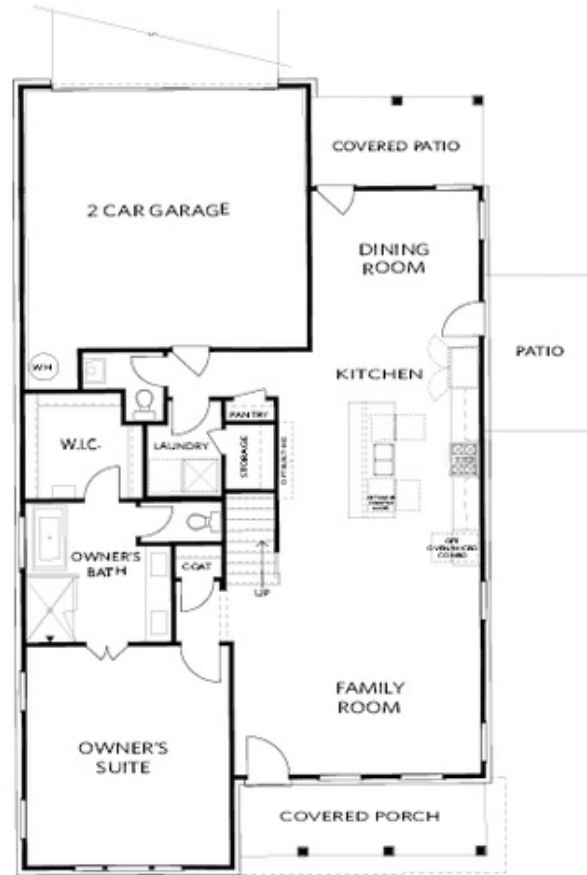
 **2 Car Garage**

 **2.0 Story**

Fabulous Fall Savings!!! TO BE BUILT home - Bring your buyers in today to add their personal touches at our Design Studio! \$5,000 towards closing cost with preferred lender(s). The Hillsdale "B" Plan offers the perfect blend of luxury and practicality, with its master on the main floor. This home provides ample space for comfortable living and entertaining, with thoughtful design features throughout. As you enter from the covered front porch, you're greeted by an open family room that seamlessly flows into the kitchen and dining area. The kitchen serves as the heart of the home, with a large island featuring quartz countertops, perfect for gathering and conversation. The dining area, surrounded by windows, creates a bright and inviting space for meals with family and friends. The main floor owner's suite boasts 10' ceilings, providing a sense of openness and grandeur. The ensuite bathroom features a dual vanity and a luxurious shower and tub ensuring a spa-like experience. A large walk-in closet adds convenience to your morning routine. The upper floor also features a spacious loft area, perfect for a media or game room, providing additional space for relaxation and entertainment. Three secondary bedrooms, two with private baths and an ...

**Want to Know More
About This Home?**

CONTACT OUR COMMUNITY SALES MANAGER
Call Us @ 470.248.2103

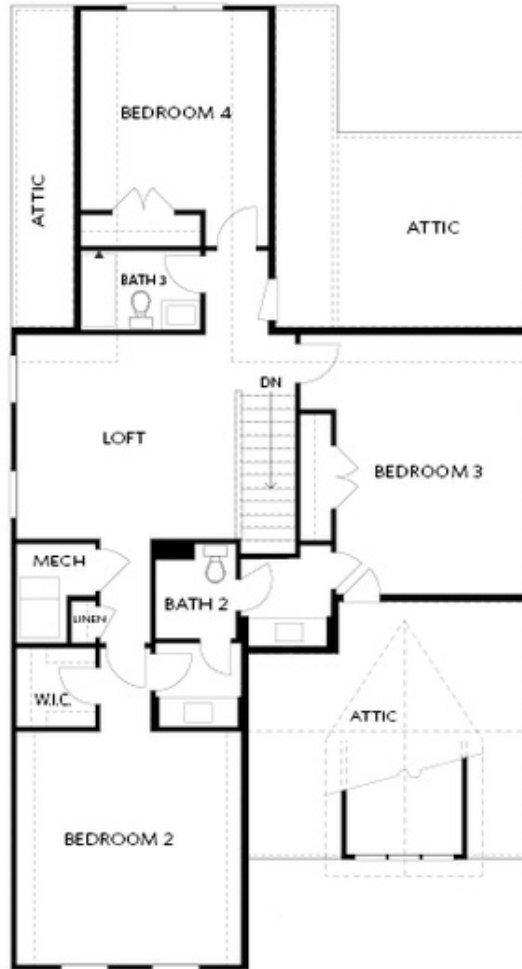


FIRST FLOOR

Elevation A

Want to Know More
About This Home?

CONTACT OUR COMMUNITY SALES MANAGER
Call Us @ 470.248.2103



SECOND FLOOR

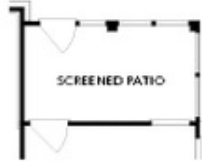
Elevation B

Want to Know More
About This Home?

CONTACT OUR COMMUNITY SALES MANAGER
Call Us @ 470.248.2103



OPT Large Shower



OPT Screened Patio



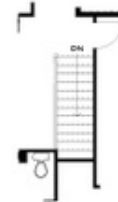
OPT 2nd Owner's Suite ilo BDR 3



OPT Linear Fireplace



OPT Fireplace



OPT Open Hand Rail

FIRST FLOOR

SECOND FLOOR

OPTIONS

Want to Know More
 About This Home?

CONTACT OUR COMMUNITY SALES MANAGER
 Call Us @ 470.248.2103