






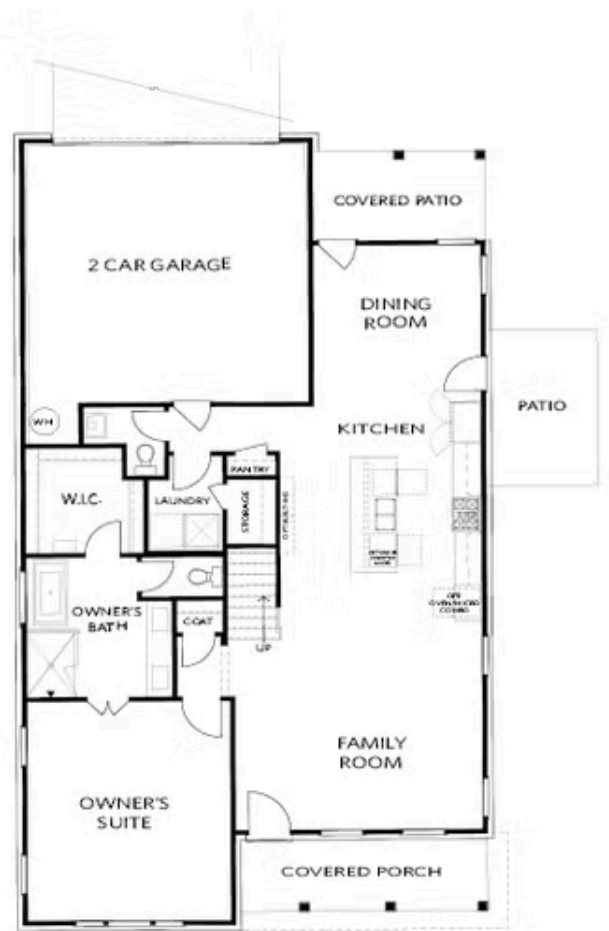
PRICED AT  
**\$671,900**

-  2574 Sq Ft
-  4 Beds
-  3.5 Baths
-  2 Car Garage
-  2.0 Story

Sizzling Summer Savings !!! TO BE BUILT home - Bring your buyers in today to add their personal touches at our Design Studio! The Hillsdale Plan offers the perfect blend of luxury and practicality, with its master on the main floor. This home provides ample space for comfortable living and entertaining, with thoughtful design features throughout. As you enter from the covered front porch, you're greeted by an open family room that seamlessly flows into the kitchen and dining area. The kitchen serves as the heart of the home, with a large island featuring quartz countertops, perfect for gathering and conversation. The dining area, surrounded by windows, creates a bright and inviting space for meals with family and friends. The main floor owner's suite boasts 10' ceilings, providing a sense of openness and grandeur. The ensuite bathroom features a dual vanity and a luxurious shower and tub ensuring a spa-like experience. A large walk-in closet adds convenience to your morning routine. The upper floor also features a spacious loft area, perfect for a media or game room, providing additional space for relaxation and entertainment. Three secondary bedrooms, two with private baths and an option for a second owner's suite complete ...

**Want to Know More  
About This Home?**

CONTACT OUR COMMUNITY SALES MANAGER  
Call Us @ 470.248.2103

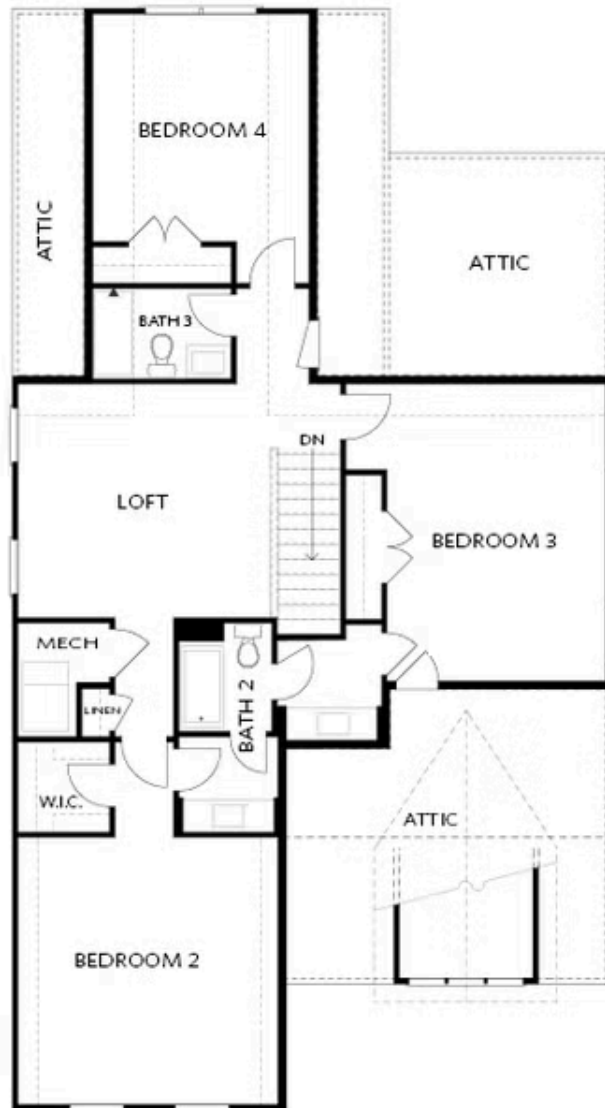


FIRST FLOOR

Elevation A

Want to Know More  
About This Home?

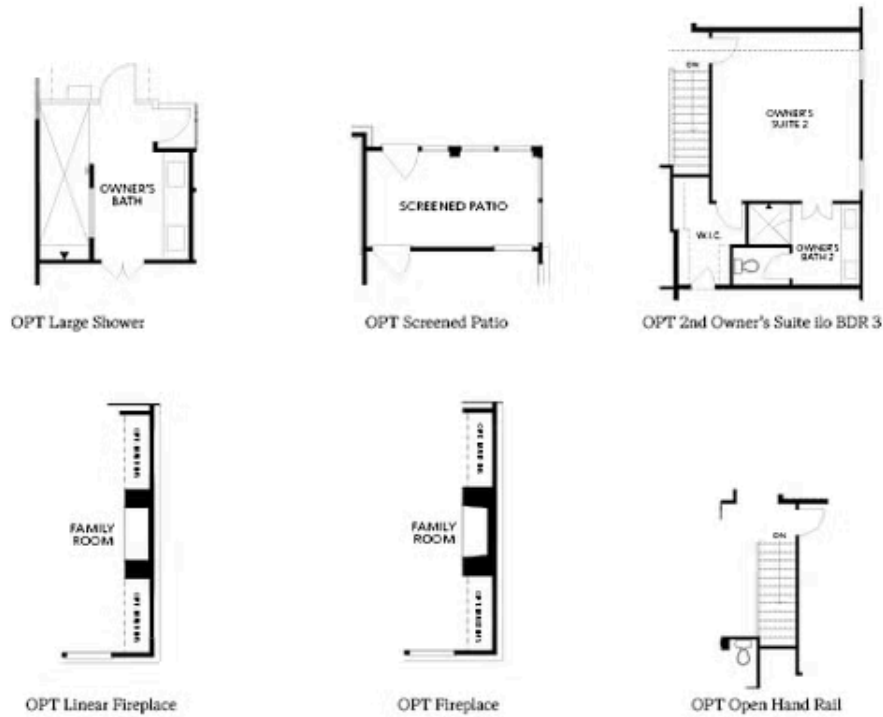
CONTACT OUR COMMUNITY SALES MANAGER  
Call Us @ 470.248.2103



Elevation B

Want to Know More  
About This Home?

CONTACT OUR COMMUNITY SALES MANAGER  
Call Us @ 470.248.2103



FIRST FLOOR

SECOND FLOOR

## OPTIONS

Want to Know More  
About This Home?

CONTACT OUR COMMUNITY SALES MANAGER  
Call Us @ 470.248.2103