



PRICED AT  
**\$698,940**

 2581 Sq Ft

 4 Beds

 3.5 Baths

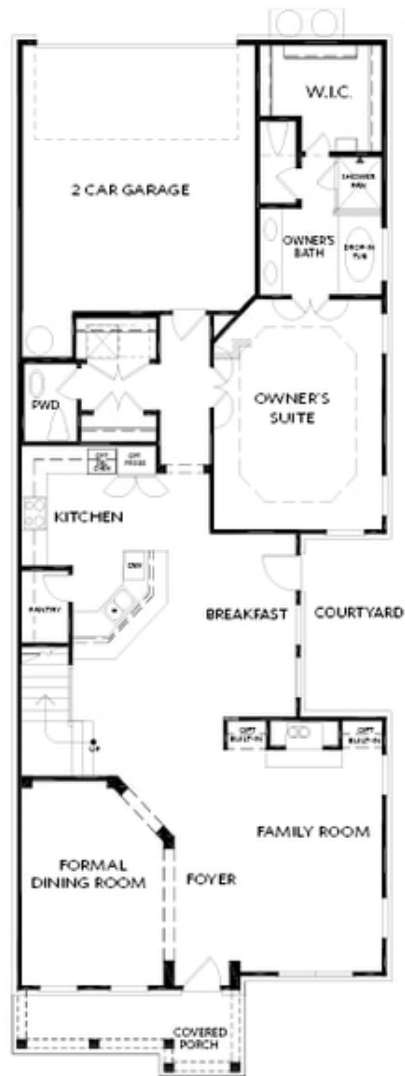
 2 Car Garage

 2.0 Story

**QUICK MOVE IN-** Welcome to the Kentmere, MASTER on MAIN with rear entry garage! This 4 BR/3.5 BA has everything you need. The main level hosts a family room with quartzite wrapped fireplace flanked with built-in cabinets, separate dining room, breakfast nook and gourmet kitchen. This spectacular kitchen has white Stacked cabinets, quartz countertops and large walk-in pantry. The owners suite is tucked away in back of main floor and features a spa like bathroom with a freestanding tub and separate tile shower. Head upstairs to 3 secondary bedrooms, 2 full baths and a spacious loft area - perfect for a growing family! In a perfect location, walkable to downtown Duluth. Evanshire is the newest development in Duluth. Beautiful gated entrance into the neighborhood. The pool and clubhouse are under construction and scheduled to be completed in time for summer next year. The HOA takes care of all your landscaping and lawn care needs. Photos are not of actual home but of similar plan. Elevate your life in 2023 with a new home by The Providence Group and \$5,000 towards closing cost when financing with one of Seller's 4 preferred lenders. For driving directions, you can use 2978 Duluth HWY, ...

**Want to Know More  
About This Home?**

CONTACT OUR COMMUNITY SALES MANAGER  
Call Us @ 470.248.2103



FIRST FLOOR

Elevation G

**Want to Know More  
About This Home?**

CONTACT OUR COMMUNITY SALES MANAGER  
Call Us @ 470.248.2103



SECOND FLOOR

Elevation G

**Want to Know More  
About This Home?**

CONTACT OUR COMMUNITY SALES MANAGER  
Call Us @ 470.248.2103