



PRICED AT  
**\$719,205**

 2581 Sq Ft

 4 Beds

 3.5 Baths

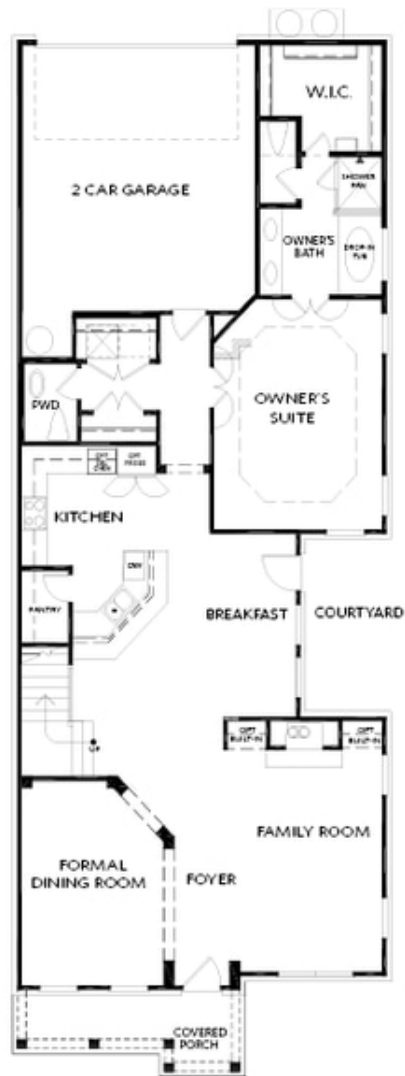
 2 Car Garage

 2.0 Story

**QUICK MOVE IN- Welcome Home! OWNERS SUITE on MAIN in a brand-new community right off HWY 120. Easy walk to downtown Duluth. Open the front door to 10' ceilings and open concept living. The kitchen showcases beautiful white kitchen cabinets to the ceiling, gorgeous quartz countertops, a farmhouse sink and matte black hardware. Plenty of cabinets and countertop space plus large, walk-in pantry. Go ahead and start planning dinner parties! Off of the kitchen leading to the patio is a fantastic breakfast area. It's very bright and spacious. The owner's suite is tucked away towards the back of the house. The owner's bath has a soaking tub, beautiful tile shower, dual vanity & the walk-in closet that is located right off the bathroom which makes it easy to get ready for your day. Main floor features a separate Formal Dining room and a large Family room with a stunning fireplace wrapped in white shiplap and stained box beam mantle. Upstairs you will find 3 large bedrooms and 2 full baths plus a loft. Nothing was missed on this home. This gated community will offer a clubhouse, pool (already under construction) and HOA-maintained lawns. All of this is in one of ...**

**Want to Know More  
About This Home?**

CONTACT OUR COMMUNITY SALES MANAGER  
Call Us @ 470.248.2103



FIRST FLOOR

Elevation G

**Want to Know More  
About This Home?**

CONTACT OUR COMMUNITY SALES MANAGER  
Call Us @ 470.248.2103



SECOND FLOOR

Elevation G

**Want to Know More  
About This Home?**

CONTACT OUR COMMUNITY SALES MANAGER  
Call Us @ 470.248.2103