



PRICED AT
\$765,040

 **2764 Sq Ft**

 **3 Beds**

 **2.5 Baths**

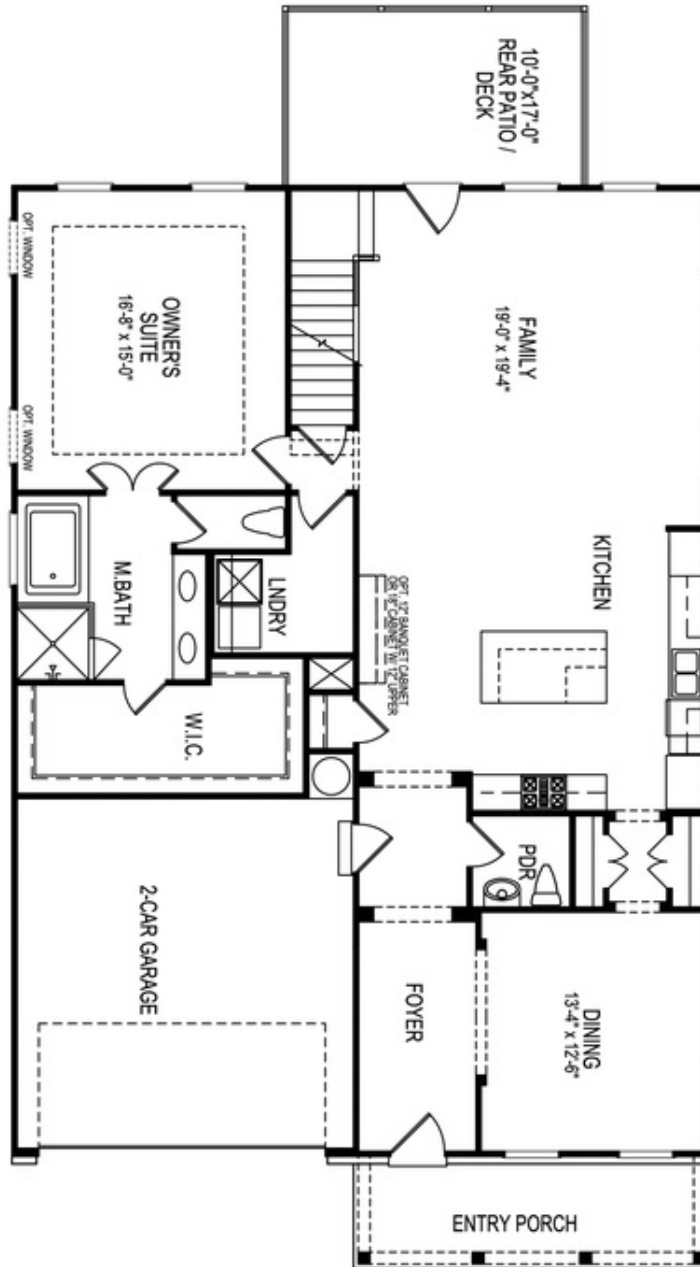
 **2 Car Garage**

 **2.0 Story**

New Year, New Home, New You! Elevate your life in 2024 with a new home by The Providence Group and \$5,000 towards closing cost with one of our Preferred Lenders. Great location that is walkable to downtown Duluth. You will love this Madilyn floorplan with MASTER ON MAIN with a covered front porch entry. Step into the foyer and find beautiful hard surface floors that lead to an open gourmet kitchen and family room with cozy fireplace. A separate dining room that has a pass way to the kitchen will make entertaining a breeze. Located on the main floor, the spacious owner's bedroom has a large walk-in closet and a gorgeous bath with an extra-large, tiled walk-in shower. There is also a sunroom with access that leads to your outdoor patio. Everything you need is on the main floor, even the laundry room. Upstairs is a great getaway for guest with 2 secondary bedrooms, a shared bath and a large loft area that makes perfect for a great media room. Beautiful, gated entrance into the neighborhood. The pool and covered cabana are completed for you to enjoy this Summer. HOA takes care of all your landscaping and lawn care needs. ...

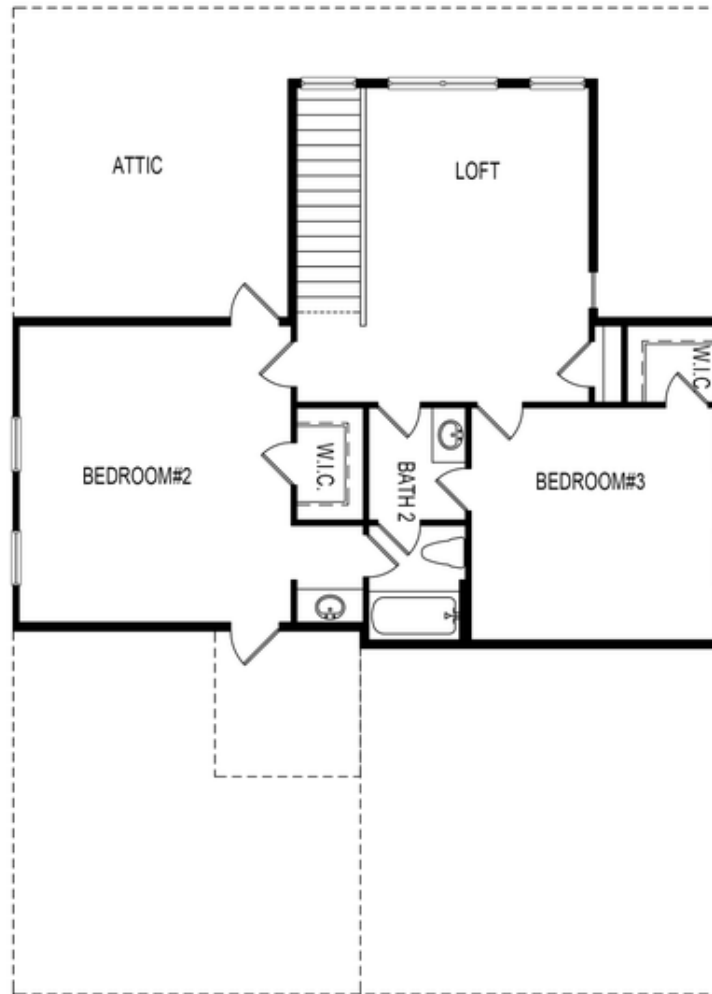
**Want to Know More
About This Home?**

**CONTACT OUR COMMUNITY SALES MANAGER
Call Us @ 470.248.2103**



Want to Know More
About This Home?

CONTACT OUR COMMUNITY SALES MANAGER
Call Us @ 470.248.2103

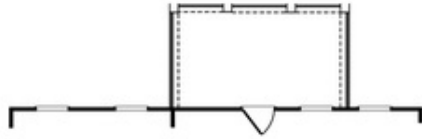


Second Floor

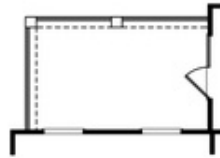
Want to Know More
About This Home?

CONTACT OUR COMMUNITY SALES MANAGER
Call Us @ 470.248.2103

Options



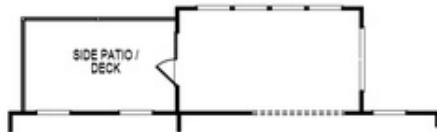
OPT Covered Patio/Deck



OPT Covered Side Patio/Deck



OPT Fireplace
 w. Opt Built-Ins



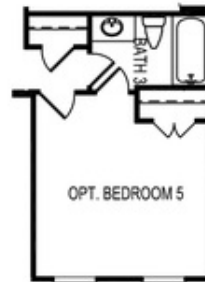
OPT Sunroom



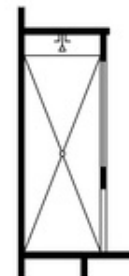
OPT Butler's Pantry



OPT Bedroom 4 ilo Loft



OPT Bedroom 5
 ilo Dining Room



OPT Owner's
 Walk-In Shower

Want to Know More
 About This Home?

CONTACT OUR COMMUNITY SALES MANAGER
 Call Us @ 470.248.2103