



PRICED AT
\$802,900

 **3472 Sq Ft**

 **5 Beds**

 **4.0 Baths**

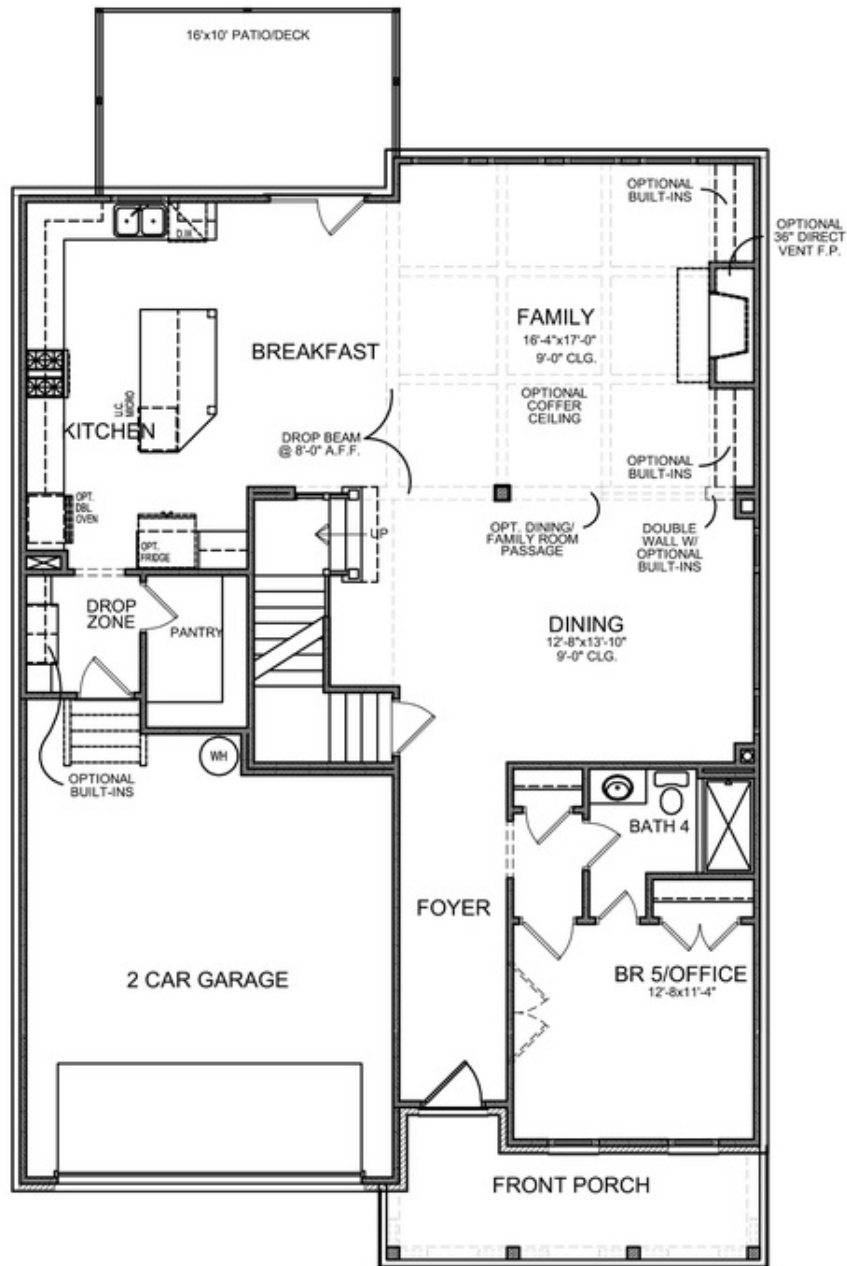
 **2 Car Garage**

 **2.0 Story**

Welcome to Evanshire! Great location that is walkable to downtown Duluth. For a limited time, you can add your options and design details ensuring to make this YOUR dream home. You will love this Montgomery with a covered front porch entry. Step into the foyer and find beautiful hard surface floors that lead to an open gourmet kitchen and family room with an option to add a cozy fireplace. A separate dining room opens to the kitchen to make entertaining a breeze. Also on the main floor is a private bedroom and bath making this perfect for overnight guests. The spacious owners bedroom has a huge walk in closet and an amazing owners bath offering His and Hers separate vanities, a large tile shower and separate soaking tub. 3 secondary bedrooms and 2 additional baths on the upper level along with the laundry room. Beautiful gated entrance into the neighborhood. The pool and clubhouse are under construction and scheduled to be completed in time for summer next year. You still have time to design your interior selections with our design studio. The HOA takes care of all your landscaping and lawn care needs. Elevate your life in 2023 with a ...

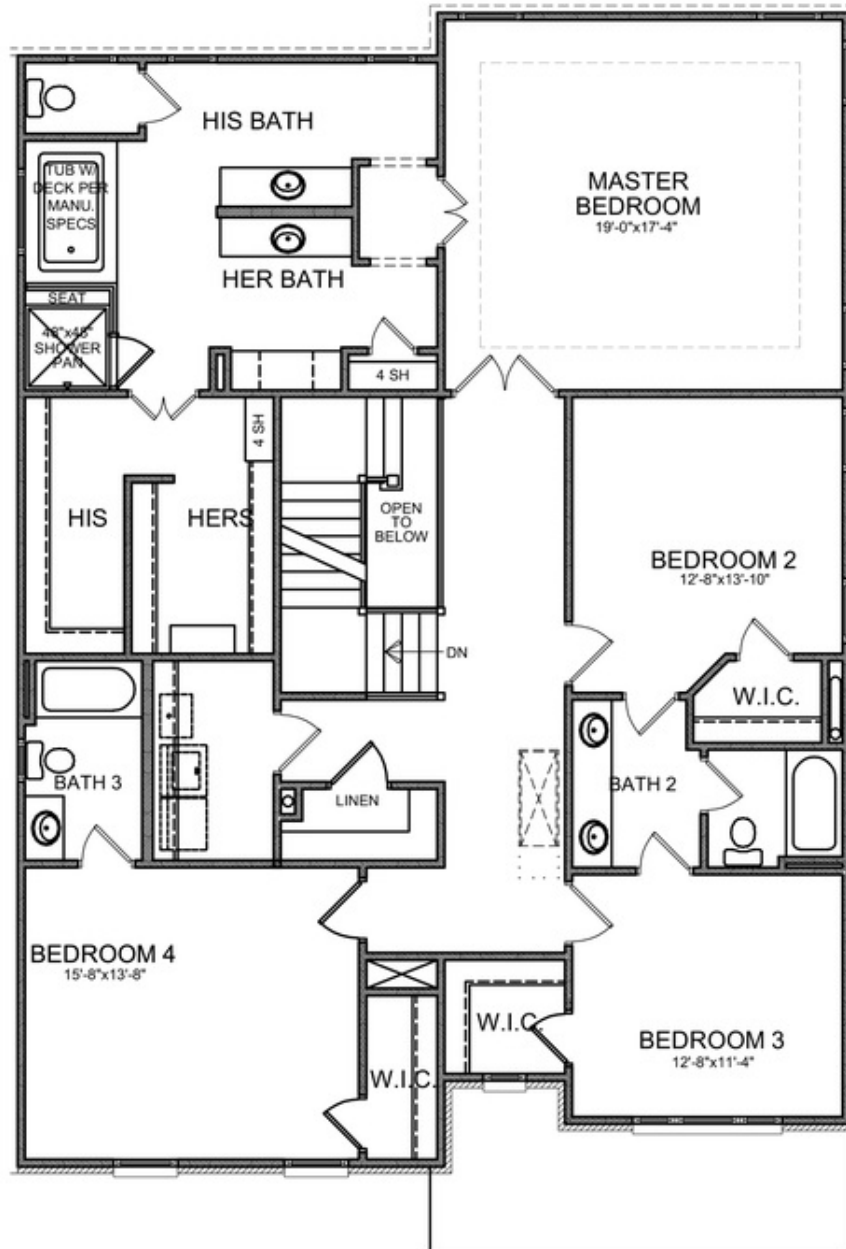
**Want to Know More
About This Home?**

CONTACT OUR COMMUNITY SALES MANAGER
Call Us @ 470.248.2103



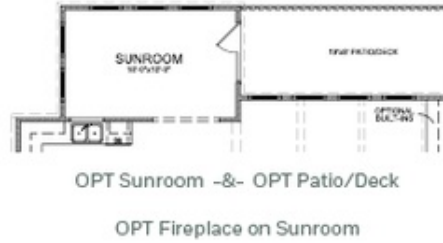
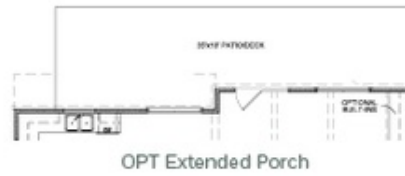
Want to Know More
 About This Home?

CONTACT OUR COMMUNITY SALES MANAGER
 Call Us @ 470.248.2103



Want to Know More
About This Home?

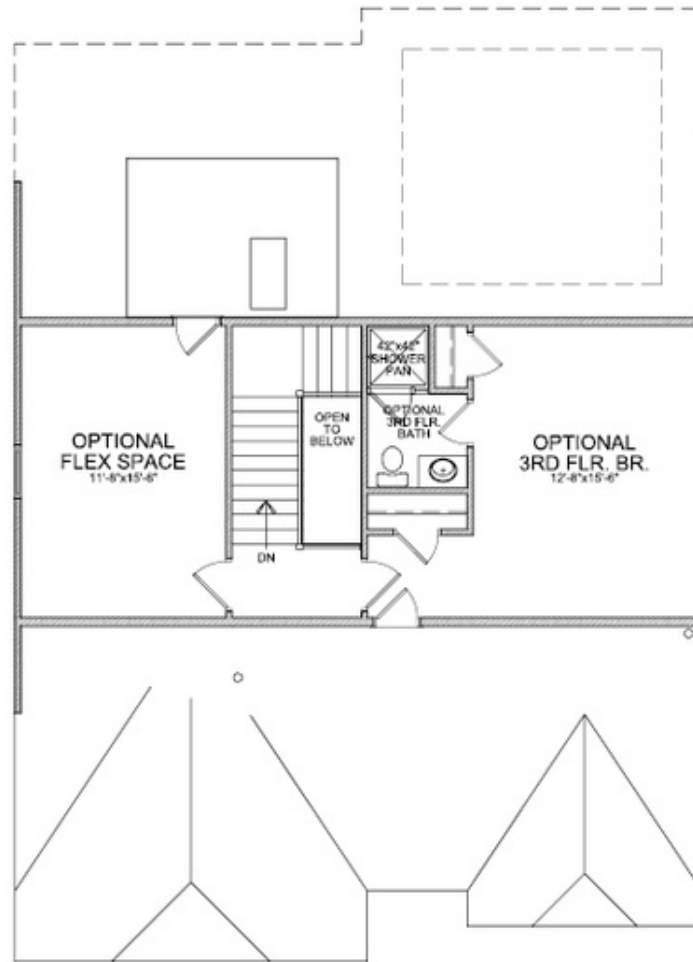
CONTACT OUR COMMUNITY SALES MANAGER
Call Us @ 470.248.2103



OPTIONS

Want to Know More
 About This Home?

CONTACT OUR COMMUNITY SALES MANAGER
 Call Us @ 470.248.2103



OPT Third Floor

*Third Floor NOT available on Elevations B & E

Want to Know More
About This Home?

CONTACT OUR COMMUNITY SALES MANAGER
Call Us @ 470.248.2103