



PRICED AT  
**\$669,850**

 2568 Sq Ft

 4 Beds

 4.5 Baths

 2 Car Garage

 2.0 Story

The best of the best! The Hillsdale plan is not your typical master on the main house because there is an additional master suite upstairs. The Providence Group always delivers a home that is elevated from the rest, and that's exactly what this looks and feels like. Nothing was missed in this home, even a prewire for an electric car charger is in the garage. The main floor is open and airy, there is the cutest covered porch off the back of the home in addition to your side patio, which is right off the kitchen - great for grilling. OWNERS SUITE on the FIRST FLOOR and 10' ceilings. Upstairs has a huge loft and 2 awesome-sized bedrooms plus secondary owner's suite and 3 baths. Great storage upstairs for decorations and overflow. Come check out this wonderful home and neighborhood. The clubhouse and pool are underway now and will be ready to enjoy in 2024! HOA maintained Lawns. Elevate your life in 2023 with a new home by The Providence Group and \$5,000 towards closing cost! For driving directions, you can use 2978 Duluth HWY, Duluth GA 30096 Photos are not of the actual home but similar plan. This home ...

**Want to Know More  
About This Home?**

CONTACT OUR COMMUNITY SALES MANAGER  
Call Us @ 470.248.2103

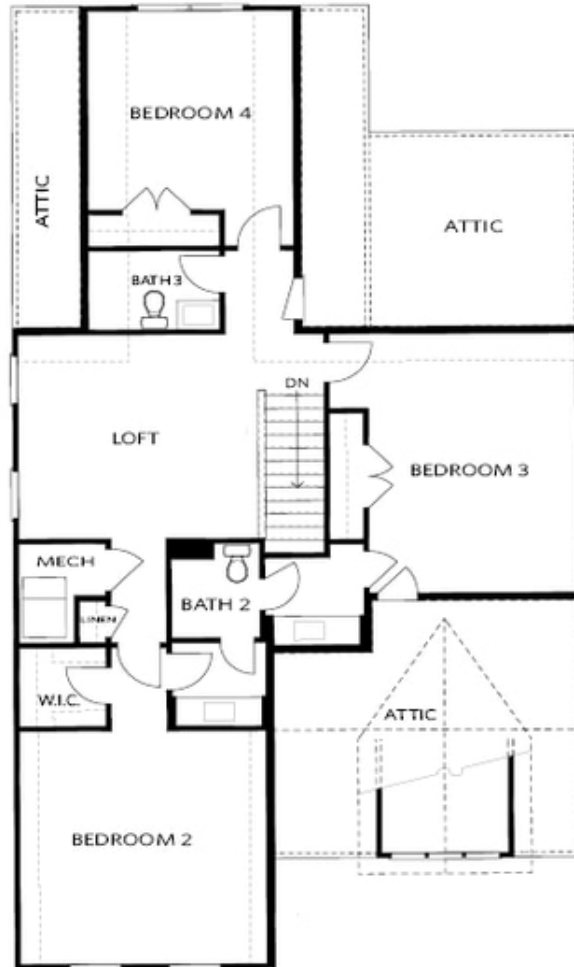


FIRST FLOOR

Elevation A

**Want to Know More  
About This Home?**

CONTACT OUR COMMUNITY SALES MANAGER  
Call Us @ 470.248.2103



SECOND FLOOR

Elevation A

**Want to Know More  
About This Home?**

CONTACT OUR COMMUNITY SALES MANAGER  
Call Us @ 470.248.2103



OPT Large Shower



OPT Screened Patio



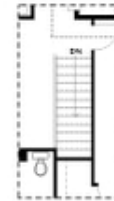
OPT 2nd Owner's Suite ilo BDR 3



OPT Linear Fireplace



OPT Fireplace



OPT Open Hand Rail

FIRST FLOOR

SECOND FLOOR

Elevation A

**Want to Know More  
 About This Home?**

CONTACT OUR COMMUNITY SALES MANAGER  
 Call Us @ 470.248.2103