



PRICED FROM
\$648,900

 2,382 Sq Ft

 3 - 4 Beds

 3.5 Baths

 2 Car Garage

 2.0 Story

- Gourmet Kitchen with Island overlooking Dining and Family Room
- Owner's Suite and Private Bath with Dual Vanities and Large Walk-In Shower on Main Level
- Secondary Bedrooms on Upper Level
- Two Car Garage

[Read More Online](#)

Available Elevations



Please refer to actual blueprints for an accurate representation of home design. Home design and elevations subject to change without prior notice. Window, door and porch locations may vary by elevation. Subject to error, omission or withdrawal.



FIRST FLOOR

Elevation B

Want to Know More
About This Home?

CONTACT OUR COMMUNITY SALES MANAGER
Call Us @ 470.248.2103



SECOND FLOOR

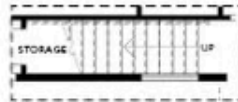
Elevation B

Want to Know More
About This Home?

CONTACT OUR COMMUNITY SALES MANAGER
Call Us @ 470.248.2103



OPT Walk-In Shower



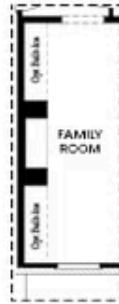
OPT Open Rail



OPT Open Rail



OPT Side Windows



OPT Lenier Fireplace



OPT Fireplace



OPT BDR 4 ilo Loft

FIRST FLOOR

SECOND FLOOR

Elevation B

Want to Know More
About This Home?

CONTACT OUR COMMUNITY SALES MANAGER
Call Us @ 470.248.2103