



PRICED FROM  
**\$735,900**

 2,336 - 2,622 Sq Ft

 3 - 4 Beds

 3.5 - 4 Baths

 2 Car Garage

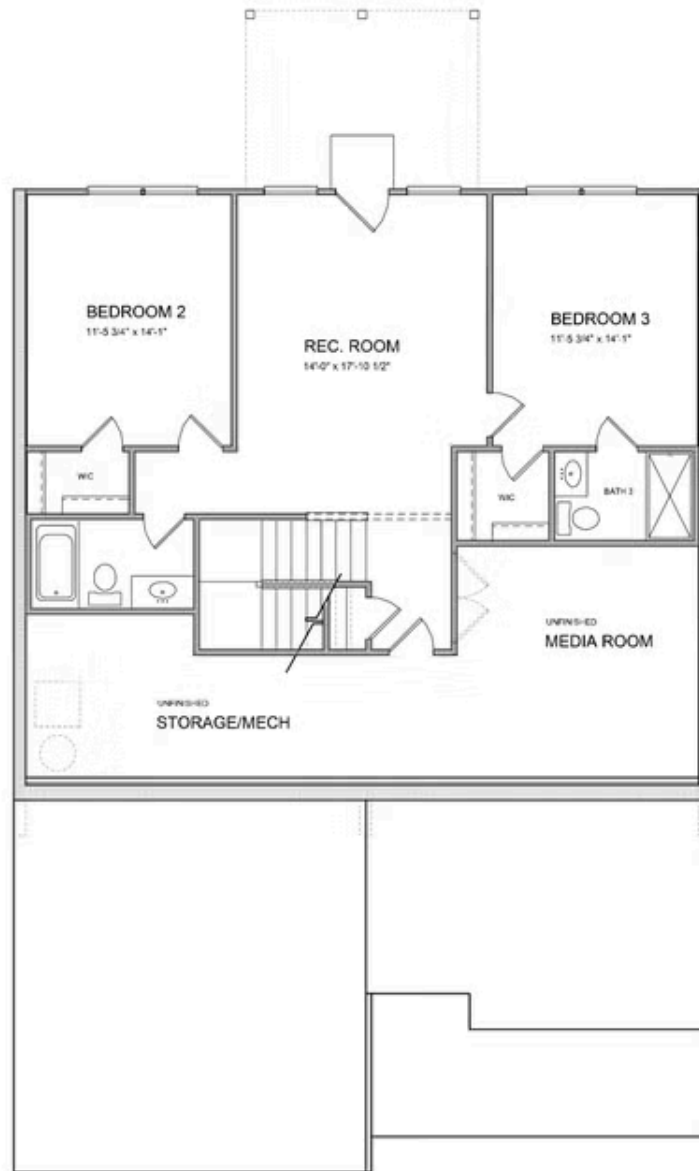
 2.0 Story

- Terrace Level Features Two Secondary Bedrooms and Rec Room
- Separate Formal Dining Room
- Open Kitchen and Living Area with Access to Outdoor Patio
- Optional Terrace Level Media Room

[Read More Online](#)

## Available Elevations





Terrace Level

**Want to Know More  
About This Home?**

CONTACT OUR COMMUNITY SALES MANAGER  
Call Us @ 470.248.2103



Want to Know More  
About This Home?

CONTACT OUR COMMUNITY SALES MANAGER  
Call Us @ 470.248.2103

### Optional Layouts



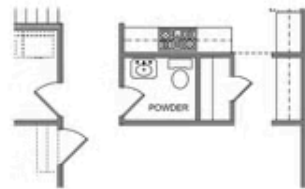
Opt Bedroom 4 & Bath 4  
into Dining Room



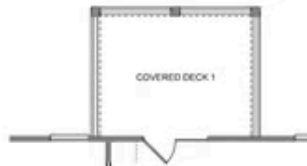
Opt Fireplace 1 on  
Exterior Wall



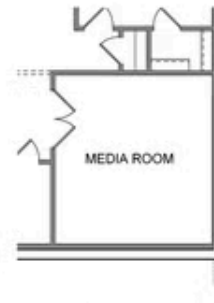
Opt Fireplace 2 on  
Owner's Suite Wall



Opt Butler's Pantry



Opt Covered Deck



Opt Media Room

Want to Know More  
About This Home?

CONTACT OUR COMMUNITY SALES MANAGER  
Call Us @ 470.248.2103

Optional Porch  
Layouts



Opt Covered Porch 2 & Covered Porch 3



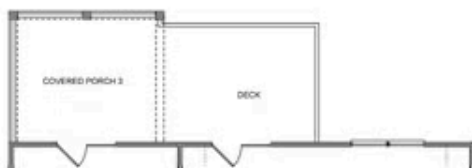
Opt Sunroom & Sitting Room



Opt Sitting Room



Opt Sunroom



Opt Covered Porch 3



Opt Covered Porch 2

Want to Know More  
About This Home?

CONTACT OUR COMMUNITY SALES MANAGER  
Call Us @ 470.248.2103