



PRICED FROM
\$657,400

 2,568 - 2,574 Sq Ft

 4 Beds

 3.5 Baths

 2 Car Garage

 2.0 Story

- Spacious Two Story Design with Open Main Level Layout
- Gourmet Kitchen with Island overlooking Dining and Family Room
- Owner's Suite and Private Bath with Dual Vanities and Large Walk-In Shower on Main Level
- Secondary Bedrooms on Upper Level
- Two Car Garage

[Read More Online](#)

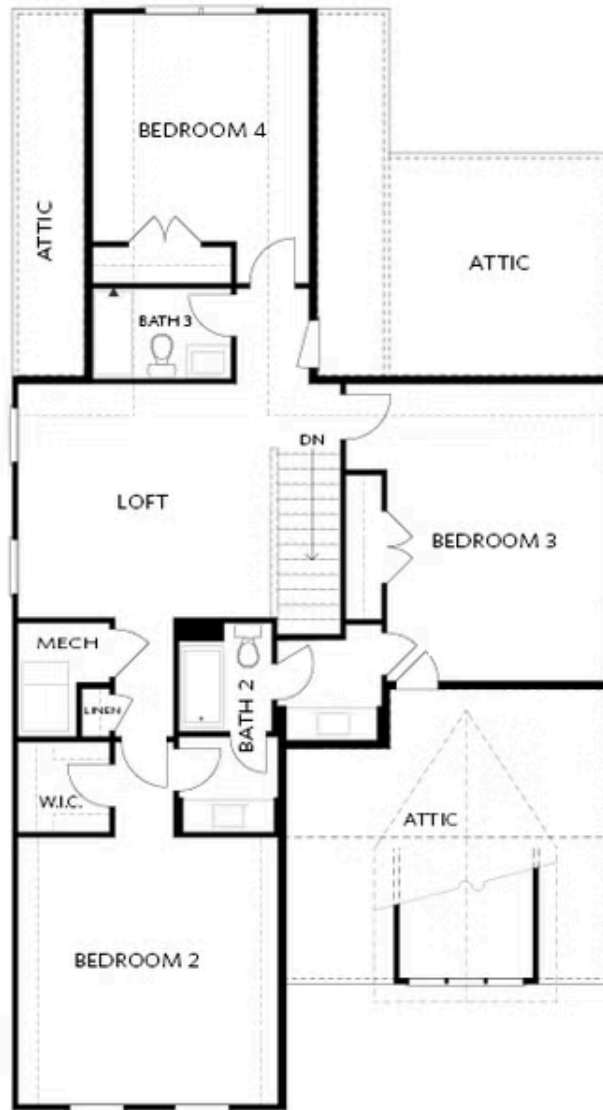
Available Elevations





Elevation A

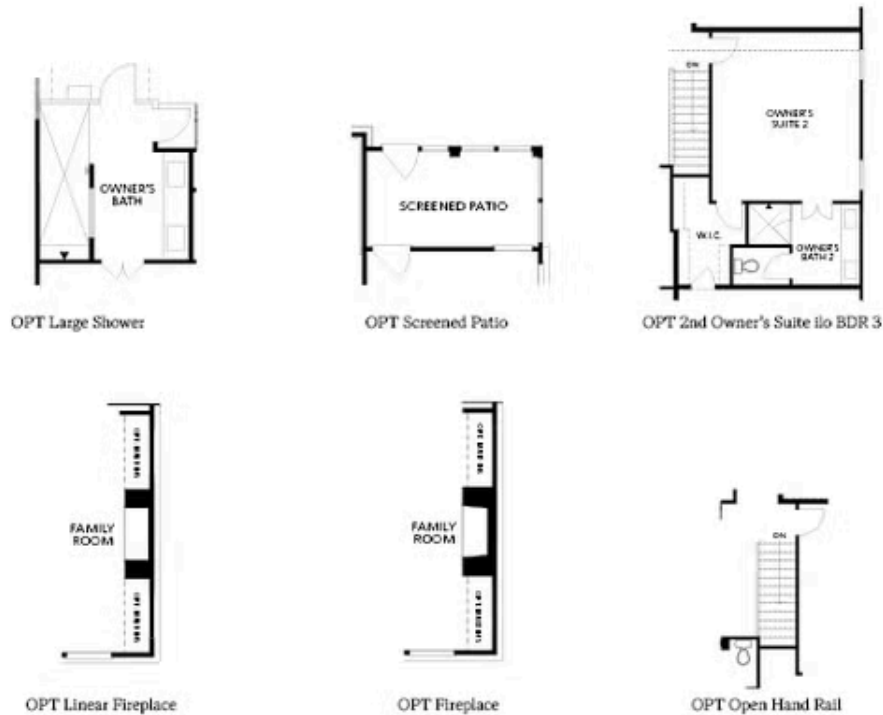
CONTACT OUR COMMUNITY SALES MANAGER
Call Us @ 470.248.2103



Elevation B

Want to Know More
About This Home?

CONTACT OUR COMMUNITY SALES MANAGER
Call Us @ 470.248.2103



FIRST FLOOR

SECOND FLOOR

OPTIONS

Want to Know More
About This Home?

CONTACT OUR COMMUNITY SALES MANAGER
Call Us @ 470.248.2103