



PRICED FROM
\$730,900

 3,059 - 3,576 Sq Ft

 3 - 4 Beds

 2.5 - 3 Baths

 2 Car Garage

 2.0 Story

- Spacious Main Level Layout with Gourmet Kitchen with Island Overlooking Family Room and Breakfast Room
- Formal Dining Room Open to Family Room and Kitchen
- Upper Level Retreat Ideal for Media Room or Secondary Family Room
- Large Owner's Bath With Private Vanities, Separate Soaking Tub and Shower
- Secondary Bedrooms Offer Shared Full Bath With Private Vanities

[Read More Online](#)

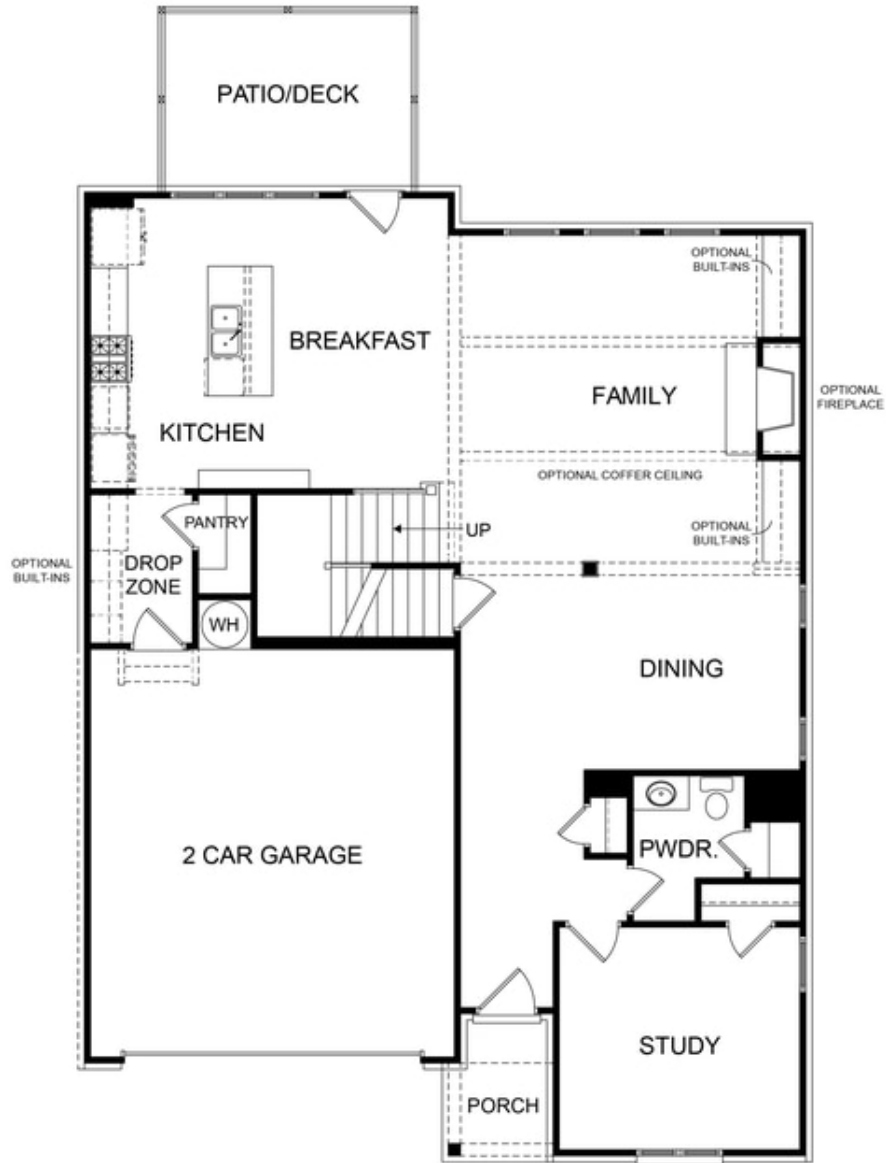
Available Elevations



Elevation C

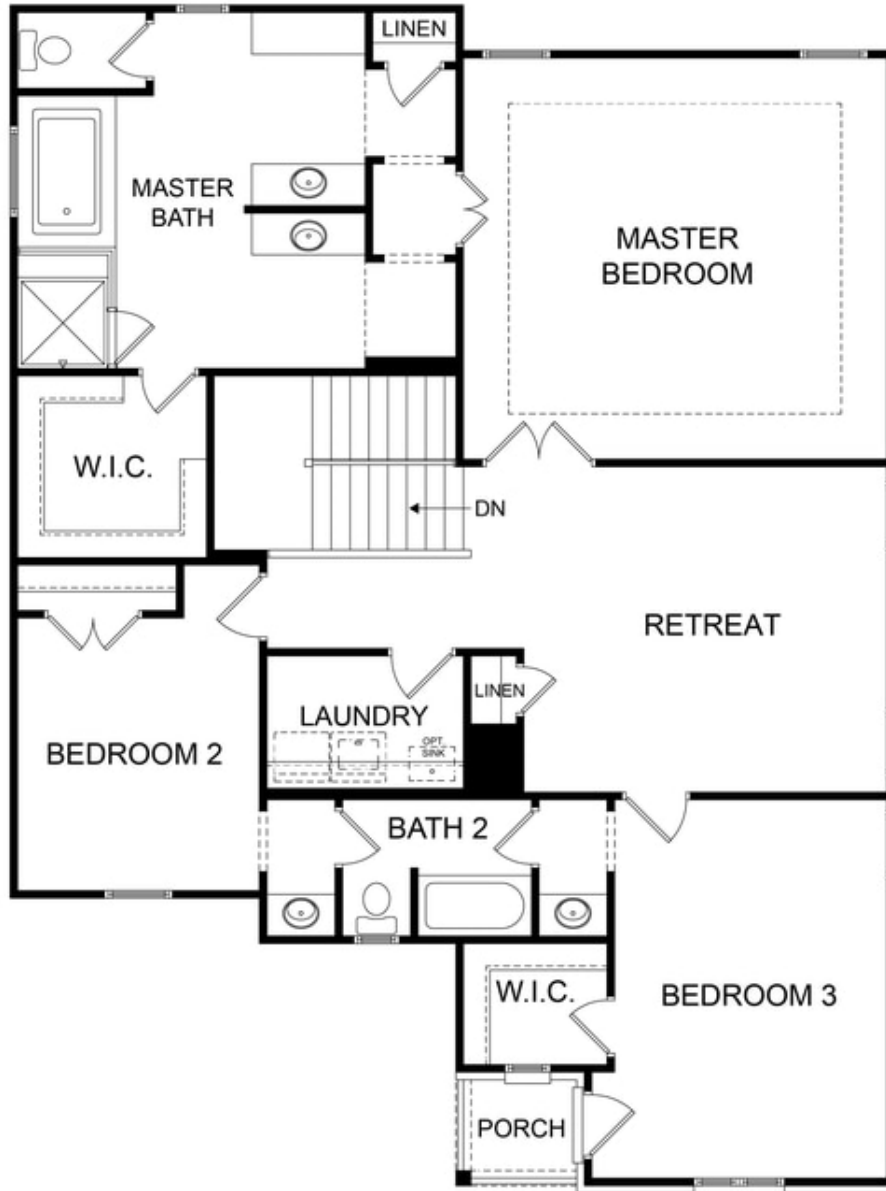


Elevation D



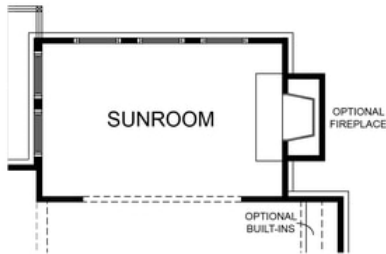
**Want to Know More
About This Home?**

CONTACT OUR COMMUNITY SALES MANAGER
Call Us @ 470.248.2103

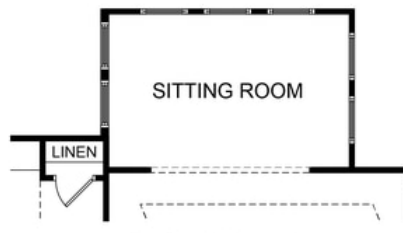


**Want to Know More
About This Home?**

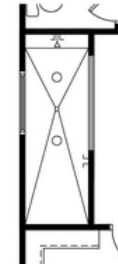
CONTACT OUR COMMUNITY SALES MANAGER
Call Us @ 470.248.2103



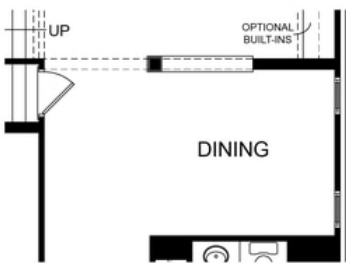
OPT. SUNROOM



OPT. SITTING ROOM



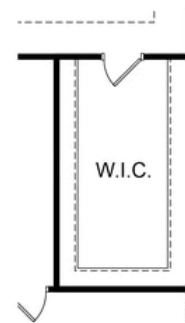
OPT. WALK-IN SHOWER



OPT. DIVISION WALL FOR DINING



OPT. BEDROOM WITH BATH ILO STUDY



OPT. ADDITIONAL WALK-IN CLOSET

**Want to Know More
About This Home?**

CONTACT OUR COMMUNITY SALES MANAGER
Call Us @ 470.248.2103