



PRICED FROM
\$631,900

 2,483 - 2,914 Sq Ft

 3 - 5 Beds

 2.5 - 4 Baths

 2 Car Garage

 2.0 - 3.0 Story

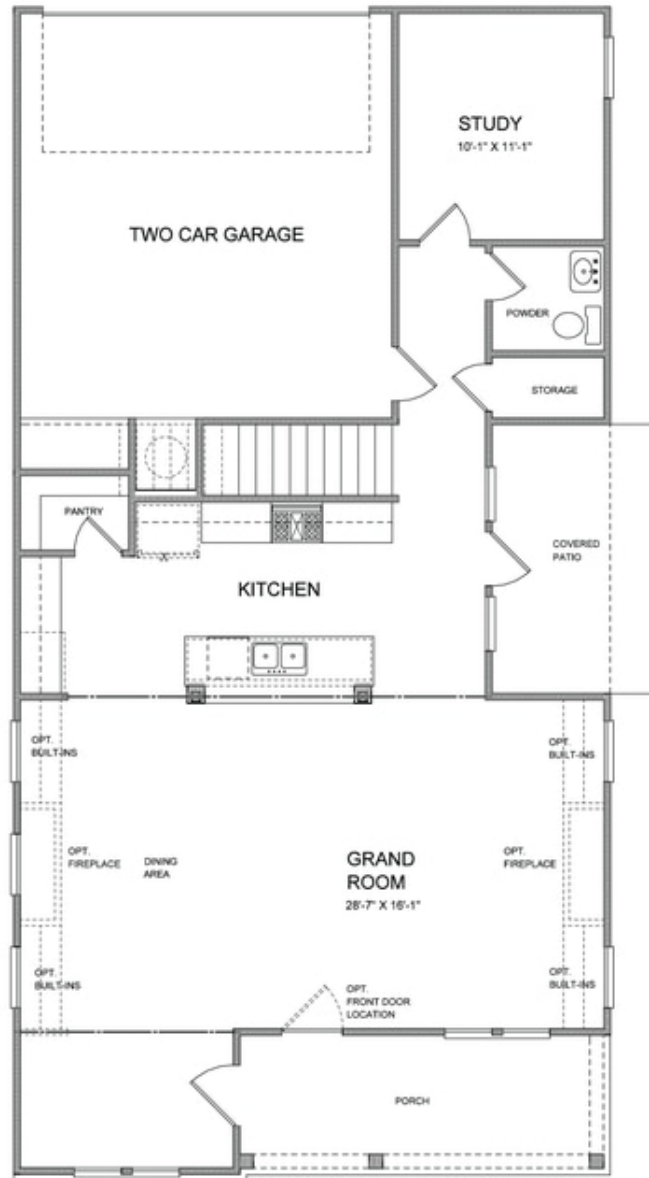
- Open Main Level Layout with Large Kitchen with Island Overlooking the Family Room and Private Covered Patio
- Owner's Suite Offers Two Large Walk In Closets and Spacious Bath with Dual Vanities
- Two Secondary Bedrooms on the Upper Level with Shared Full Bath
- Optional Third Level Retreat with Bedroom and Full Bath
- Two Car Rear Entry Garage

[Read More Online](#)

Available Elevations

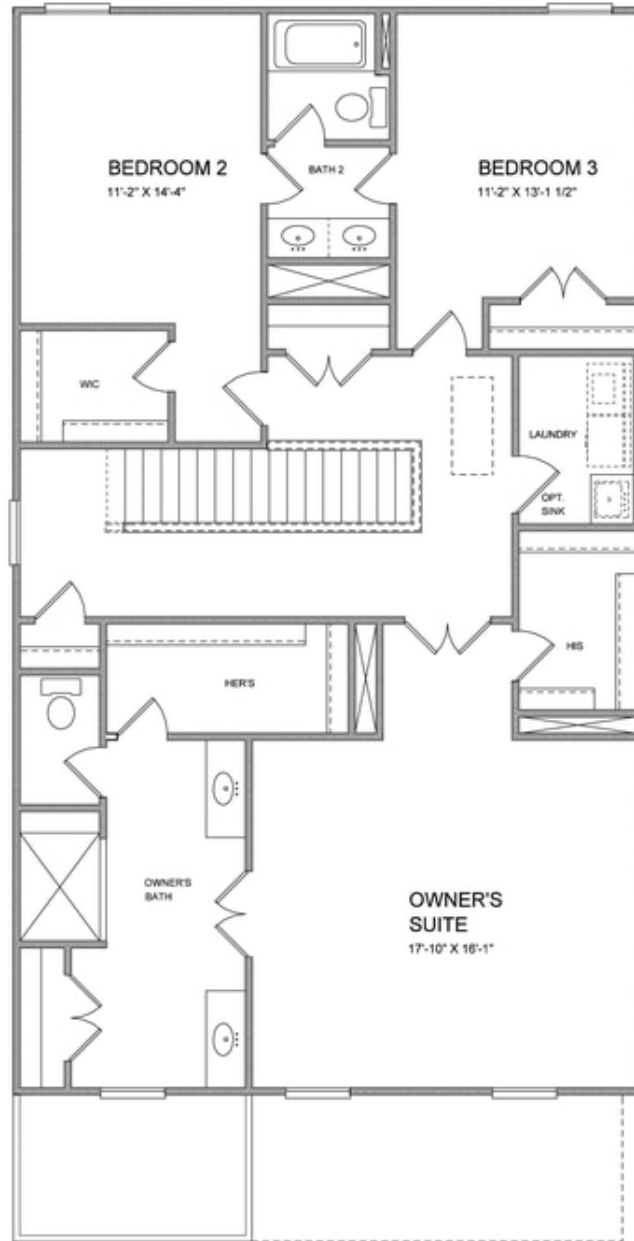


Elevation D



**Want to Know More
About This Home?**

CONTACT OUR COMMUNITY SALES MANAGER
Call Us @ 470.248.2103



**Want to Know More
About This Home?**

CONTACT OUR COMMUNITY SALES MANAGER
Call Us @ 470.248.2103



OPTION
 WHEN EXTERIOR STORAGE SHED



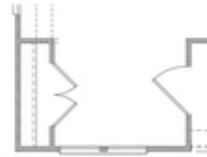
OPTION
 WHEN EXTERIOR STORAGE and
 INTERIOR CLOSET



OPTION
 WHEN BEDROOM 4 and BATH 3



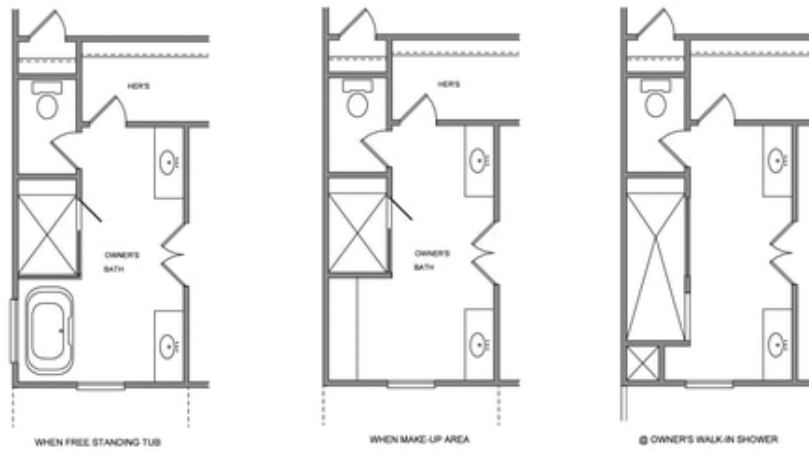
OPTION
 WHEN 9' SLIDING GLASS DOOR



OPTION
 WHEN COAT CLOSET

**Want to Know More
 About This Home?**

CONTACT OUR COMMUNITY SALES MANAGER
 Call Us @ 470.248.2103



**Want to Know More
About This Home?**

CONTACT OUR COMMUNITY SALES MANAGER
Call Us @ 470.248.2103