



PRICED AT  
**\$632,150**

 2010 Sq Ft

 3 Beds

 2.5 Baths

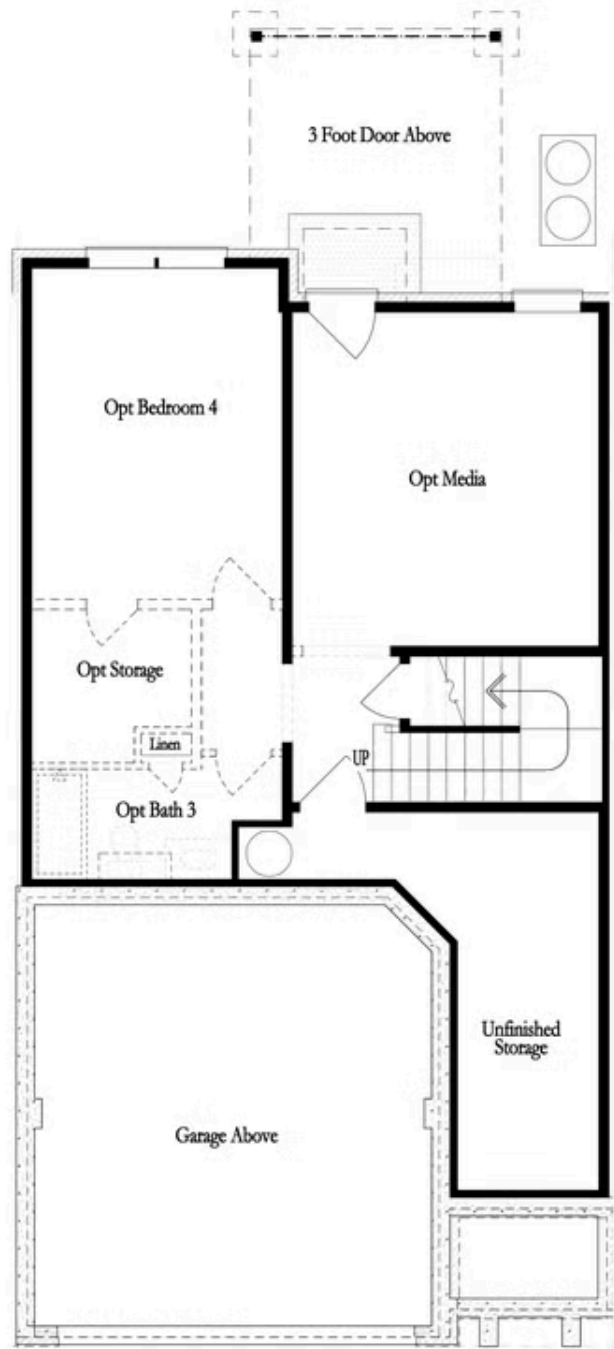
 2 Car Garage

 2.0 Story

~~~SPRING INTO A NEW HOME~~~ \$5,000 in CLOSING COST when using one of our 5-preferred lenders. Welcome to THE PROVIDENCE GROUP's Evanshire Community just moments from Downtown Duluth. Our VERY LAST STOCKTON BUILDING is now released for sale due at the end of 2025. WALK IN MAIN LEVEL GARAGE home on a basement with PRIVATE WOODED VIEWS won't be available for long. Life is easy here in this GATED community offering a POOL and HOA maintained landscaping so you can relax when traveling. This OPEN CONCEPT floorplan has a massive island in the kitchen overlooking the dining room and family room. Step right into the home from the garage or front door and be at your kitchen for easy grocery bag transfer from your car. FIREPLACE in your family room for those cool winter nights or enjoy a morning coffee on your rear COVERED DECK bird watching off into your wooded views. SOFT GRAY cabinets and WHITE QUARTZ countertops throughout the home allow for your personality to shine through when decorating. Tons of natural light coming into the home with all the windows in your living space. Come on upstairs to your 2nd floor where OVERSIZED OWNER'S SUITE and HUGE ...

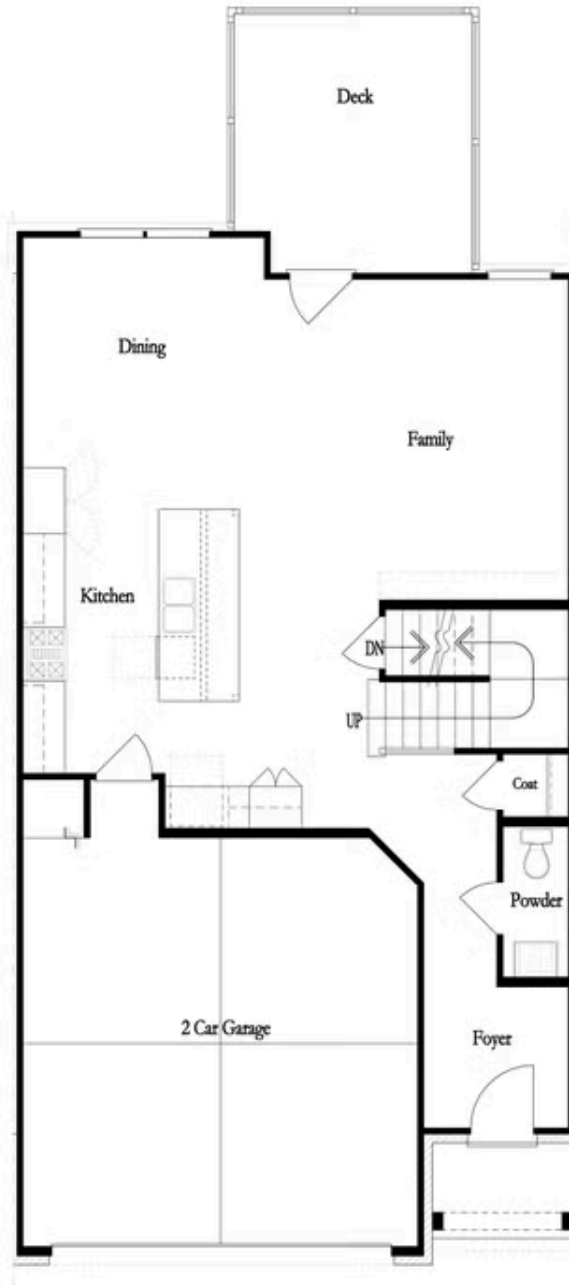
**Want to Know More  
About This Home?**

CONTACT OUR COMMUNITY SALES MANAGER  
Call Us @ 470.248.2103



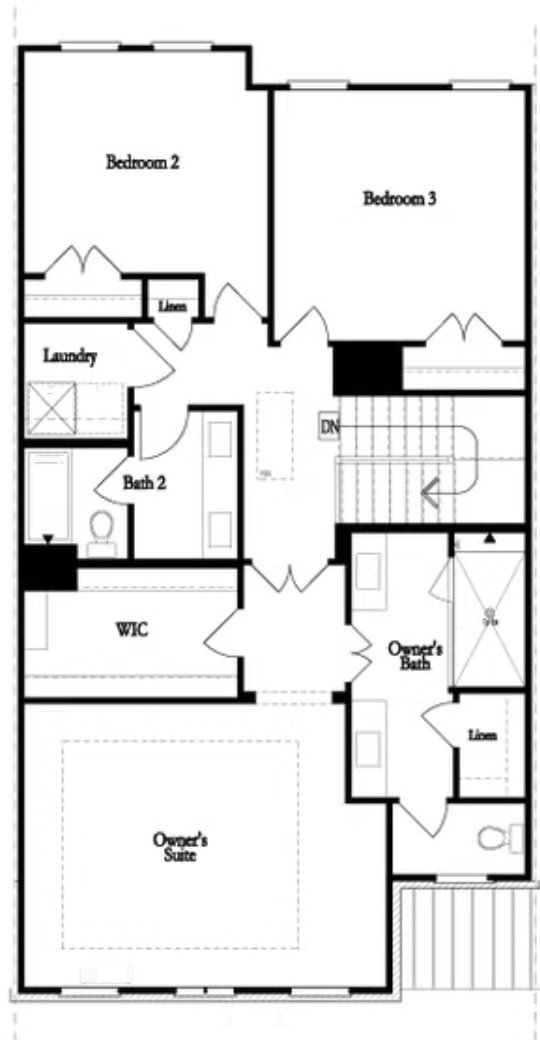
Want to Know More  
About This Home?

CONTACT OUR COMMUNITY SALES MANAGER  
Call Us @ 470.248.2103



Want to Know More  
About This Home?

CONTACT OUR COMMUNITY SALES MANAGER  
Call Us @ 470.248.2103

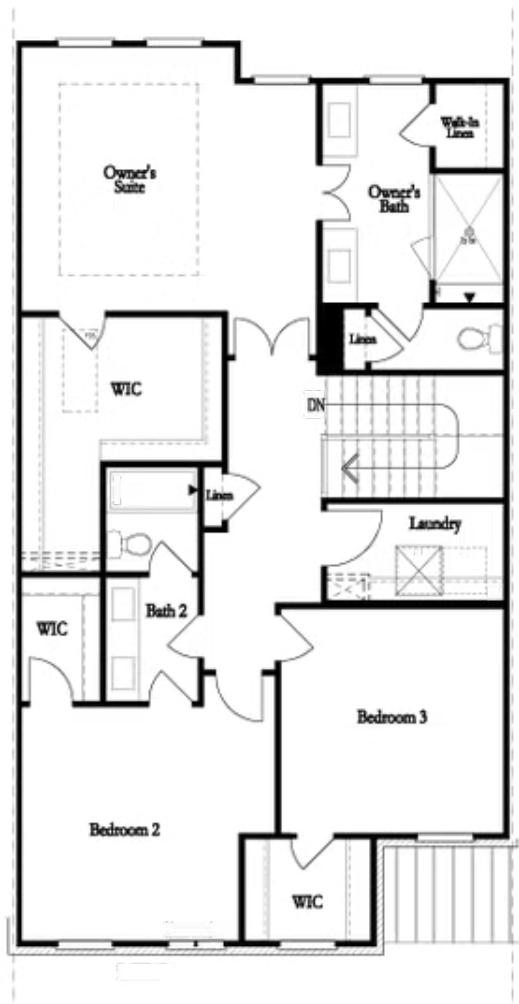


Second Floor  
(Owner's Front)

Elevations G, H, JI, J3 & L

Want to Know More  
About This Home?

CONTACT OUR COMMUNITY SALES MANAGER  
Call Us @ 470.248.2103

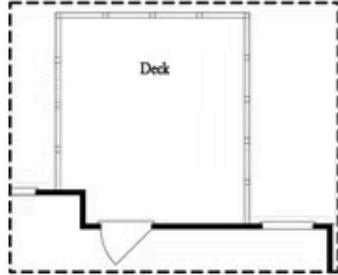


Second Floor  
(Owner's Rear)

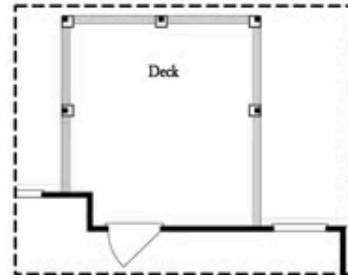
Elevations G, H, JI, J3 & L

Want to Know More  
About This Home?

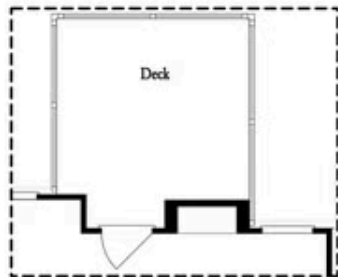
CONTACT OUR COMMUNITY SALES MANAGER  
Call Us @ 470.248.2103



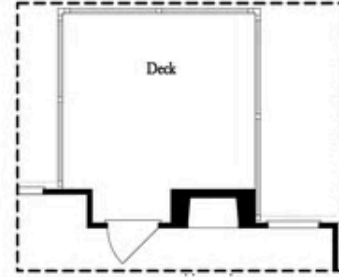
*Opt. Screened Porch*



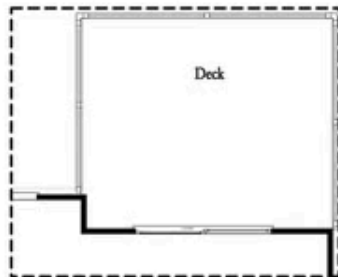
*Opt. Covered Porch*



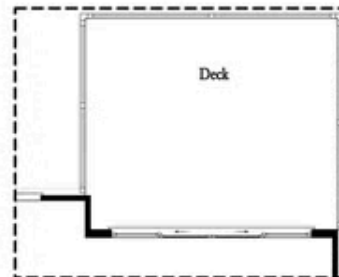
*Opt. Linear Fireplace*



*Opt. Fireplace*



*Opt. 8' Slider Door*

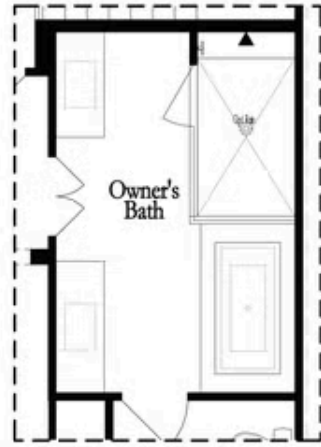


*Opt. 12' Slider*

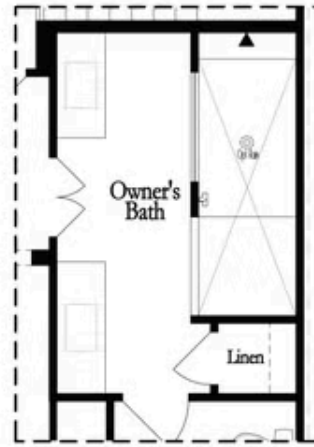
OPTIONS  
FIRST FLOOR

Want to Know More  
About This Home?

CONTACT OUR COMMUNITY SALES MANAGER  
Call Us @ 470.248.2103

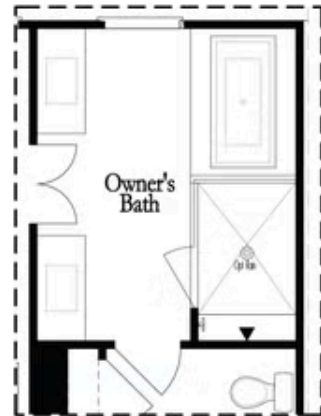


Opt. Shower/Tub

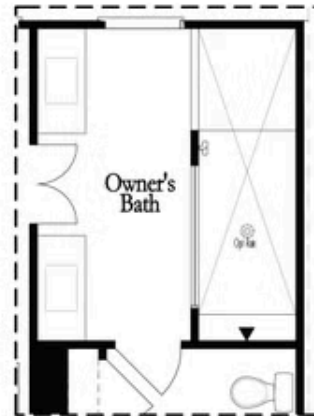


Opt. Walk-Through Shower

Owner's Front - Options



Opt. Shower/Tub



Opt. Walk-Through Shower

Owner's Rear - Options

Want to Know More  
 About This Home?

CONTACT OUR COMMUNITY SALES MANAGER  
 Call Us @ 470.248.2103