

PRICED AT
\$537,650

 2073 Sq Ft

 3 Beds

 4.0 Baths

 2 Car Garage

 3.0 Story

~~~~~SPRING INTO A NEW HOME! ~~~~~ Come make Evanshire near Downtown Duluth a place to call home. This popular Garrison plan is perfect for making memories to last a lifetime. Tucked in the rear of the GATED COMMUNITY which offers a POOL is this 3-story home in one of our most private locations. COOL STONE DESIGN COLLECTION with upgrades including QUARTZ COUNTERTOPS and GE PROFILE APPLIANCE PACKAGE has a simple hint of soft gray and white tops perfect to decorate with all your personality shining through. MEDIA ROOM off the front entrance is the best first impression possible. Make this your office, lounge space, piano or pool room your guest will get excited about upon entry. Come on upstairs to your cozy Family Room with FIREPLACE where Netflix and Chill and great sports games are watched. Deck off the rear for outdoor entertaining sipping cocktails in the sunshine or watching the night unfold. Bedroom off the kitchen is the best spot for guest room or office space nice and close to all the happenings. LARGE KITCHEN with OPEN CONCEPT LIVING at it's finest and large island perfect to gather around. Owner's Suite situated in the rear of the home's 3rd ...

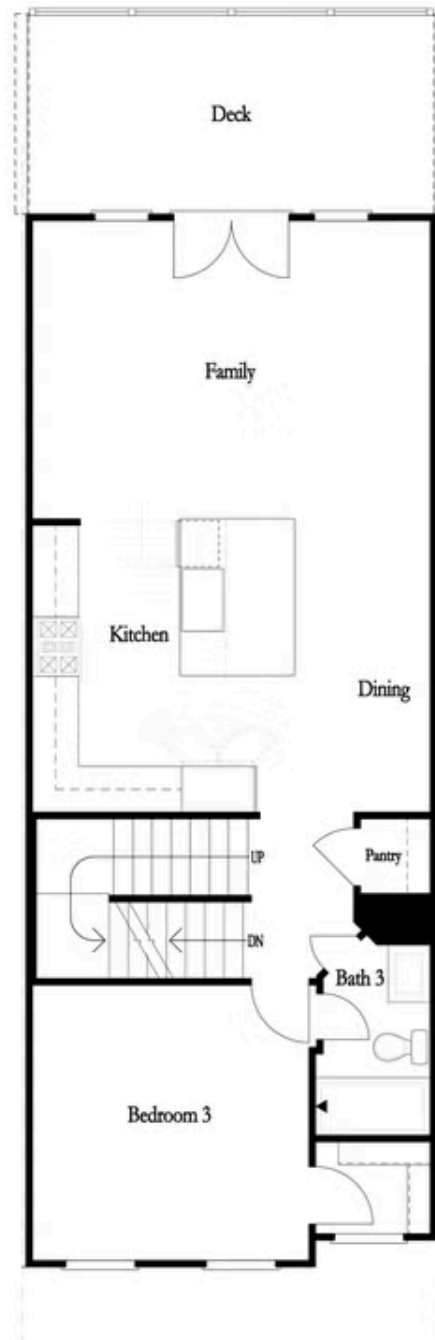
Want to Know More  
About This Home?

CONTACT OUR COMMUNITY SALES MANAGER  
Call Us @ 470.248.2103



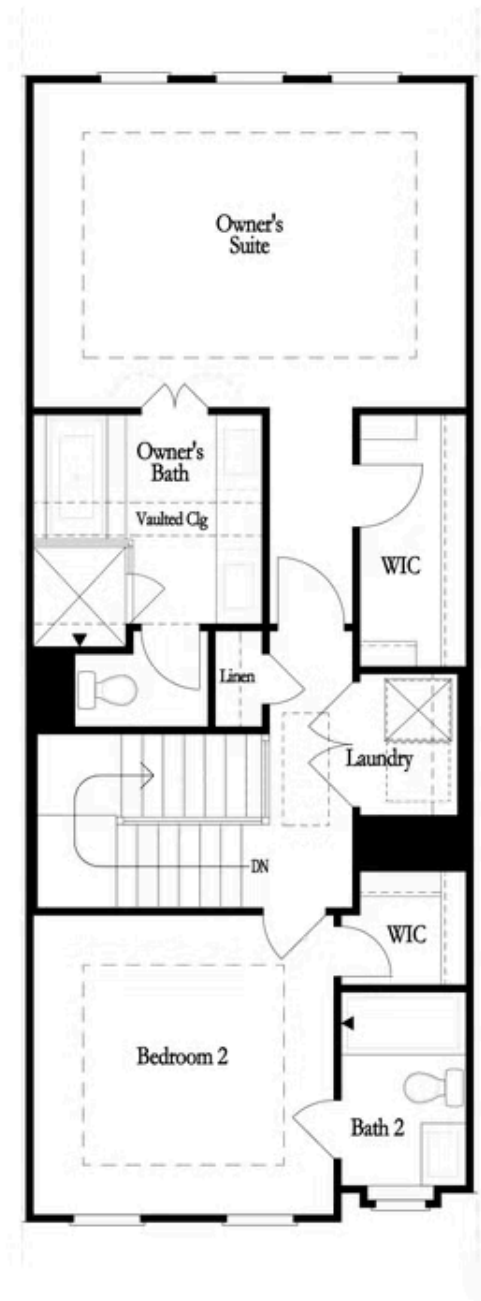
Want to Know More  
About This Home?

CONTACT OUR COMMUNITY SALES MANAGER  
Call Us @ 470.248.2103



Want to Know More  
About This Home?

CONTACT OUR COMMUNITY SALES MANAGER  
Call Us @ 470.248.2103

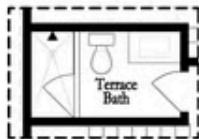


Want to Know More  
About This Home?

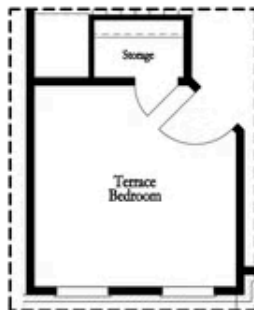
CONTACT OUR COMMUNITY SALES MANAGER  
Call Us @ 470.248.2103



Opt. Dry Bar



Opt. Shower Only



Opt. Terrace Bedroom

FIRST FLOOR



Opt. Linear Fireplace



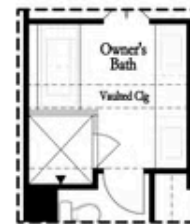
Opt. Fireplace

SECOND FLOOR

OPTIONS



Opt. Walk-In Shower



Opt. Freestanding Tub

THIRD FLOOR

Want to Know More  
About This Home?

CONTACT OUR COMMUNITY SALES MANAGER  
Call Us @ 470.248.2103