




PRICED AT  
**\$568,650**

 2091 Sq Ft

 3 Beds

 3.5 Baths

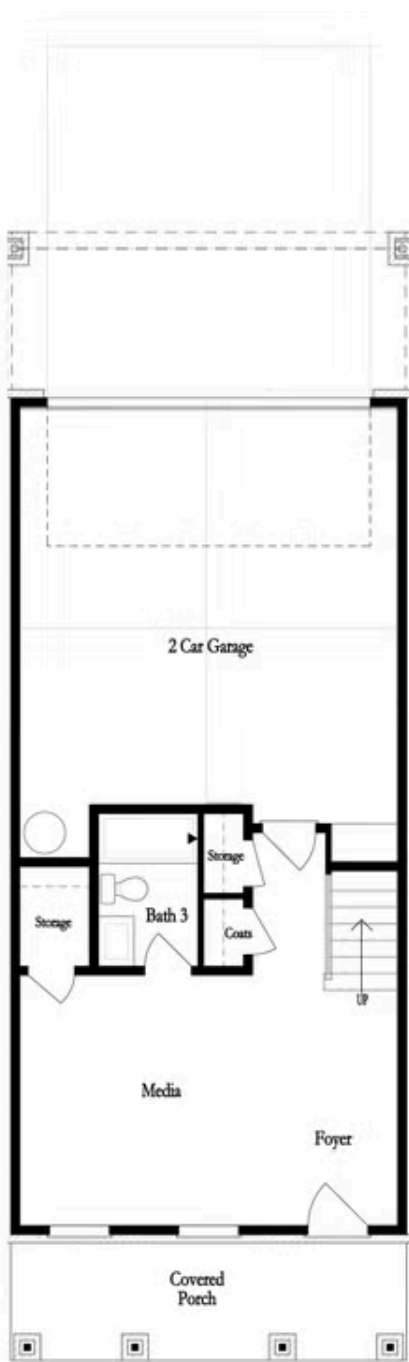
 2 Car Garage

 3.0 Story

~~~ SPRING INTO A NEW HOME! ~~~The Sherwood Floorplan - Designed to Impress from the moment you arrive, this home captivates with its expansive covered deck above the inviting patio entrance—perfect for rocking chairs, relaxation, and warm welcomes. Step inside to discover a thoughtfully designed space, where double doors open into a sunlit front bedroom ideal as a home office or a private guest retreat with its own full bath. Open Concept Living at Its Finest the oversized kitchen is a chef's dream, featuring upgraded quartz countertops, abundant cabinetry, and a premium GE appliance package to bring your favorite recipes to life. The family room features a cozy fireplace, creating a warm and inviting atmosphere for relaxation and gatherings. Double glass doors flood the space with natural light, leading to a spacious deck that welcomes the beauty of the outdoors. Throughout the home, soft white tones and light flooring provide a timeless backdrop, ready for your personal touch. Luxury Meets Comfort with the oversized owner's suite boasts a walk-in closet with a window for natural light, while the massive walk-in shower in the en-suite bath is sure to impress guests and offer daily indulgence. Located in the gated, HOA-maintained community ...

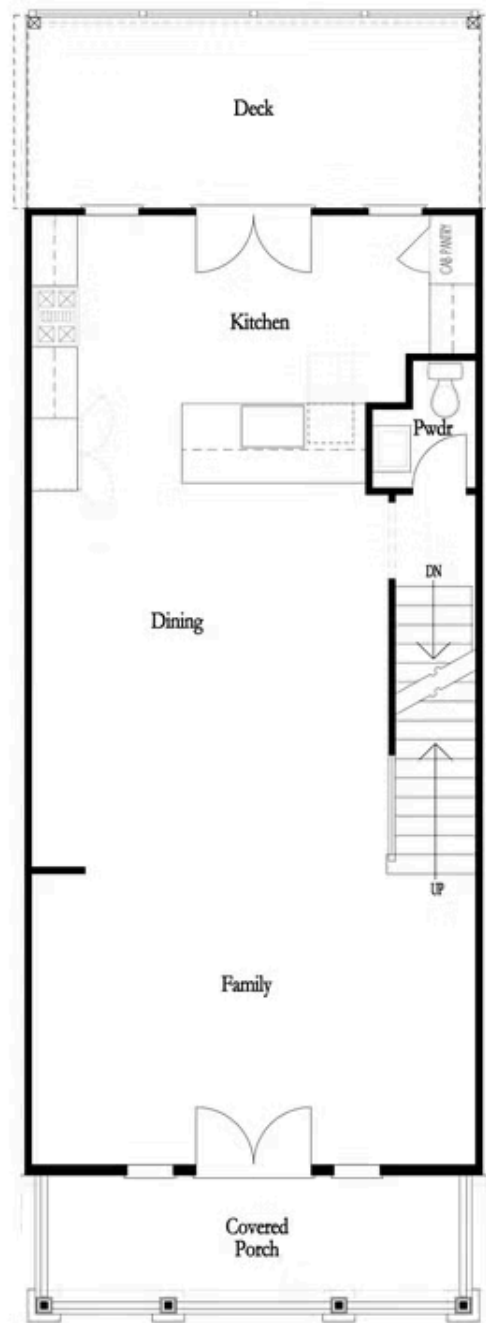
Want to Know More  
About This Home?

CONTACT OUR COMMUNITY SALES MANAGER  
Call Us @ 470.248.2103



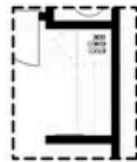
Want to Know More  
About This Home?

CONTACT OUR COMMUNITY SALES MANAGER  
Call Us @ 470.248.2103

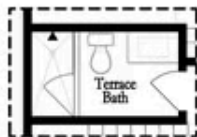


Want to Know More  
About This Home?

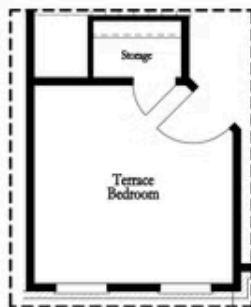
CONTACT OUR COMMUNITY SALES MANAGER  
Call Us @ 470.248.2103



Opt. Dry Bar



Opt. Shower Only



Opt. Terrace Bedroom

#### FIRST FLOOR

1,000 sq. ft. (approx.)



Opt. Linear Fireplace



Opt. Fireplace

#### SECOND FLOOR

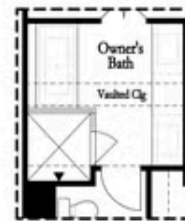
700 sq. ft. (approx.)

#### OPTIONS

1,000 sq. ft. (approx.)



Opt. Walk-In Shower



Opt. Freestanding Tub

#### THIRD FLOOR

500 sq. ft. (approx.)

Want to Know More  
About This Home?

CONTACT OUR COMMUNITY SALES MANAGER  
Call Us @ 470.248.2103