



PRICED AT
\$561,150

 **2091 Sq Ft**

 **3 Beds**

 **3.5 Baths**

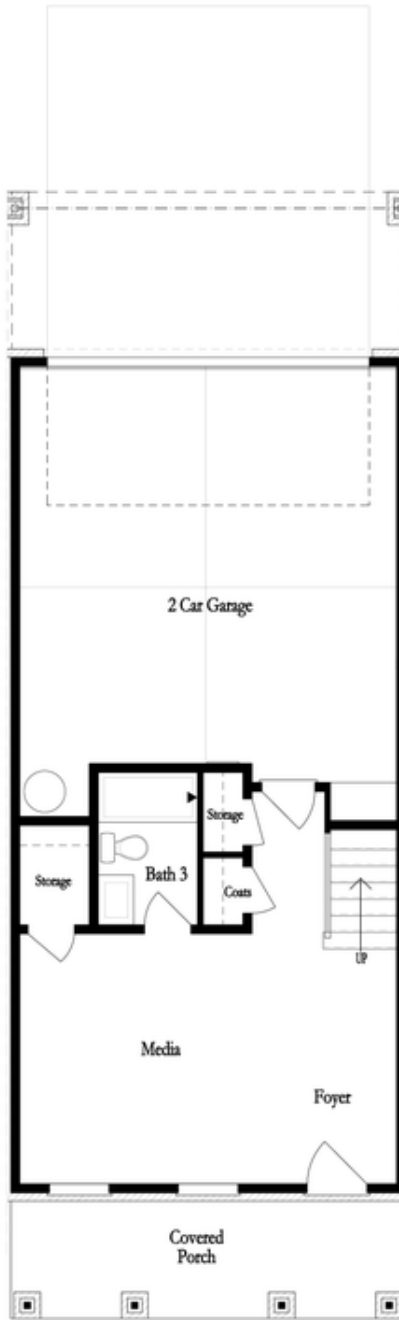
 **2 Car Garage**

 **3.0 Story**

~~~ **SPRING INTO A NEW HOME!** ~~~Welcome to the Sherwood home design at Evanshire, where modern elegance and comfort come together. As you enter, you're greeted by a spacious foyer, featuring a cozy bedroom and private bath on the first floor. The main level is a stunning open-concept space, complete with a charming front porch and double doors leading to a rear deck — perfect for enjoying abundant outdoor living. The kitchen is a true highlight, showcasing warm neutral tones, sleek quartz countertops, and stainless-steel appliances. A gas fireplace in the family room really does set a warm, welcoming tone — perfect for those chilly evenings. This stylish setup offers a clean, modern aesthetic, giving you the freedom to personalize the space to your taste. The open dining area offers seamless views to both the kitchen and family room, creating the ideal setting for entertaining family and friends. Upstairs, you'll find the owners suite, alongside an additional secondary bedroom with a private bath. The owner's suite features a generous walk-in closet and a luxurious ensuite. The primary bathroom offers a luxurious retreat with double vanities, a separate tiled shower and a soaking tub — perfect for unwinding after a long ...

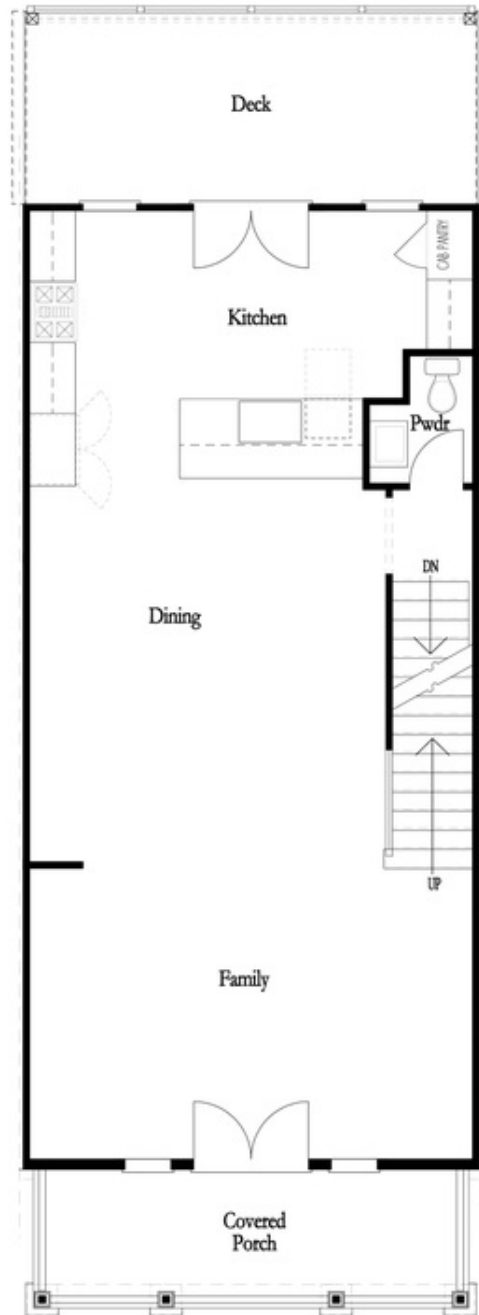
Want to Know More  
About This Home?

CONTACT OUR COMMUNITY SALES MANAGER  
Call Us @ 470.248.2103



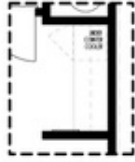
Want to Know More  
About This Home?

CONTACT OUR COMMUNITY SALES MANAGER  
Call Us @ 470.248.2103

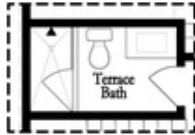


Want to Know More  
About This Home?

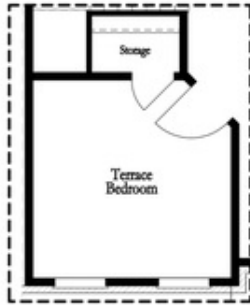
CONTACT OUR COMMUNITY SALES MANAGER  
Call Us @ 470.248.2103



Opt. Dry Bar



Opt. Shower Only



Opt. Terrace Bedroom

FIRST FLOOR



Opt. Linear Fireplace

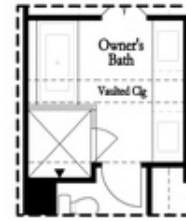


Opt. Fireplace

SECOND FLOOR



Opt. Walk-In Shower



Opt. Freestanding Tub

THIRD FLOOR

OPTIONS

Want to Know More  
 About This Home?

CONTACT OUR COMMUNITY SALES MANAGER  
 Call Us @ 470.248.2103