


PRICED AT
\$557,400

 2091 Sq Ft

 3 Beds

 3.5 Baths

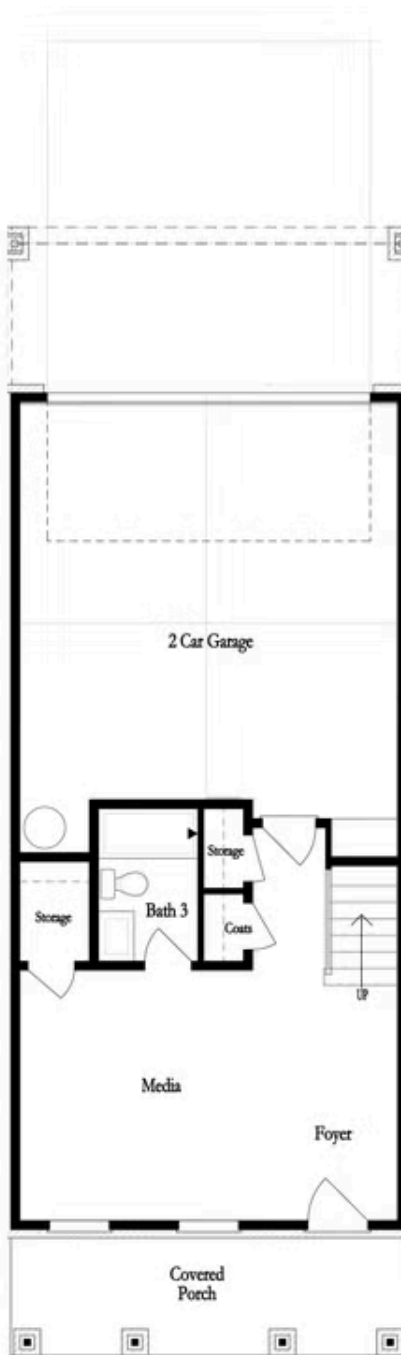
 2 Car Garage

 3.0 Story

NEW YEAR, NEW HOME, NEW YOU! - Make Evanshire in Duluth a place to call home by The Providence Group. This lovely Sherwood floorplan has just what your heart desires. Show stopper before you even enter the home is your huge covered deck above your covered patio entrance the width of the home begging to have rocking chairs for decoration and relaxation. Welcome your guest through the front entrance where double doors lead into a bedroom perfect as a full time office. A spot to work all day with sunshine pouring in, calming views and a full bath which is great for use as a guest room. OPEN CONCEPT LIVING at it's finest. Oversized kitchen offering upgraded QUARTZ countertops and lots of cabinet space for all your entertaining goodies. Love to cook? Upgraded GE Appliance package lets your recipes come to life. Huge deck off kitchen's double glass doors letting in tons of South sunlight so this home is bright to say the least. Soft grays and light floors throughout allowing you the opportunity to add your personality whichever way it may sway. Oversized Owner's where the walk-in closet has a window for natural light! MASSIVE WALK IN SHOWER in ...

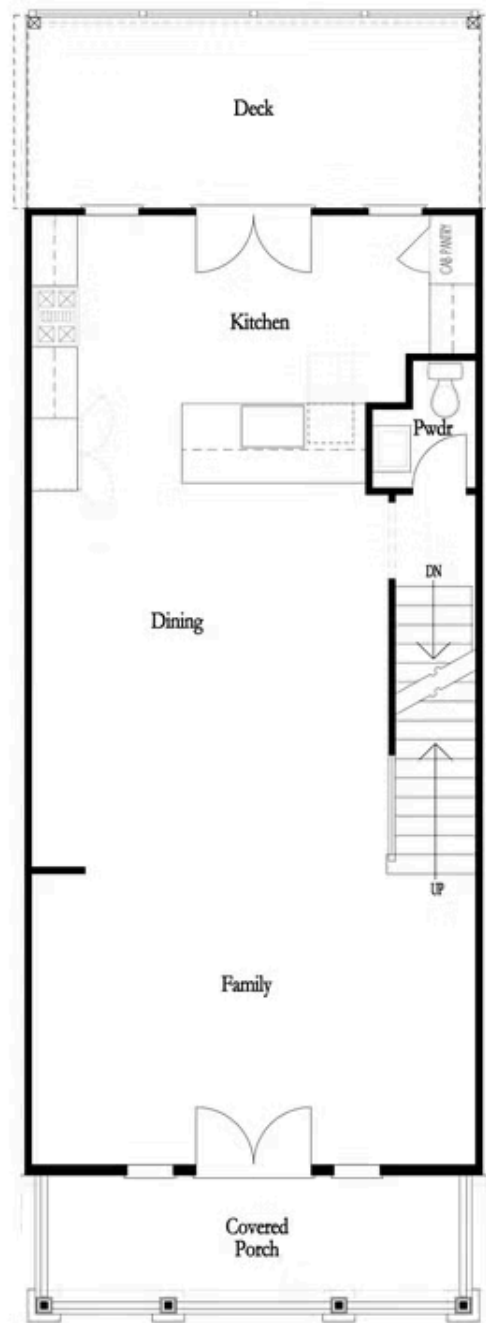
**Want to Know More
About This Home?**

CONTACT OUR COMMUNITY SALES MANAGER
Call Us @ 470.248.2103



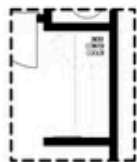
Want to Know More
About This Home?

CONTACT OUR COMMUNITY SALES MANAGER
Call Us @ 470.248.2103

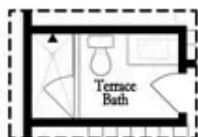


Want to Know More
About This Home?

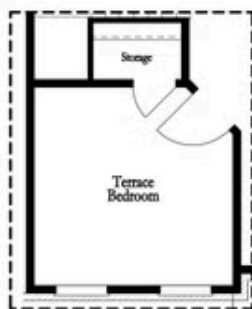
CONTACT OUR COMMUNITY SALES MANAGER
Call Us @ 470.248.2103



Opt. Dry Bar



Opt. Shower Only



Opt. Terrace Bedroom

FIRST FLOOR

1,100 sq. ft. | 1,100 sq. ft.



Opt. Linear Fireplace



Opt. Fireplace

SECOND FLOOR

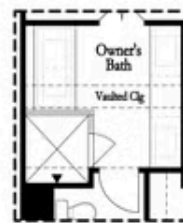
1,100 sq. ft. | 1,100 sq. ft.

OPTIONS

1,100 sq. ft.



Opt. Walk-In Shower



Opt. Freestanding Tub

THIRD FLOOR

1,100 sq. ft. | 1,100 sq. ft.

Want to Know More
About This Home?

CONTACT OUR COMMUNITY SALES MANAGER
Call Us @ 470.248.2103