




PRICED AT
\$584,910

 2091 Sq Ft

 3 Beds

 3.5 Baths

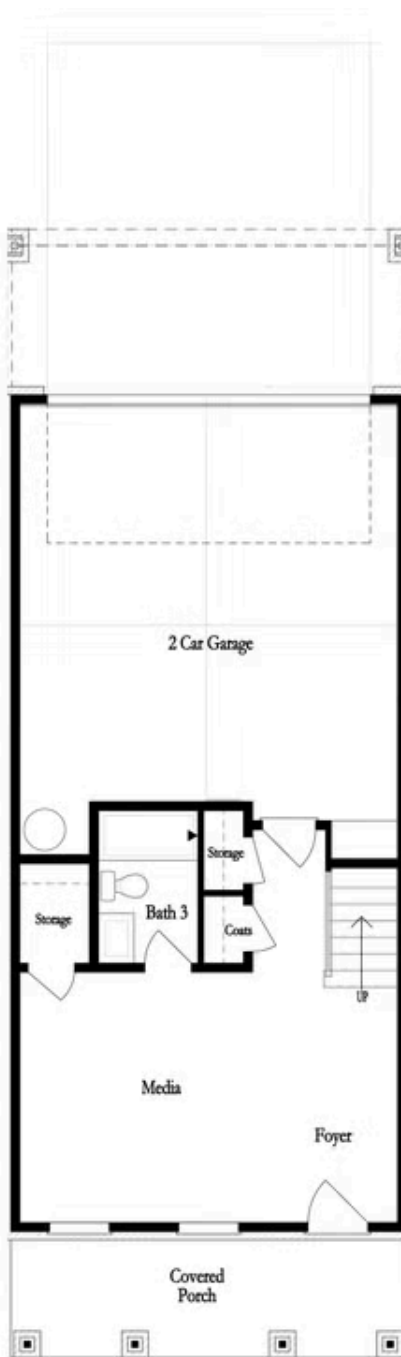
 2 Car Garage

 3.0 Story

~~~ PICK YOUR PROMOTION w/\$15,000 ~~~ - Choose the path to homeownership that fits your life- low rates, upgrades, appliances, closing cost and more w/Preferred Lender!!!! --- Located in the vibrant community of Downtown Duluth, this MOVE IN READY townhome offers the perfect combination of modern living and small-town charm. The Sherwood home design is a haven of modern design and comfort. Upon entering this lovely home, you're greeted by a double door offering flexibility for various uses such as a game room, fitness room, or an additional bedroom. This versatile space caters to your lifestyle needs, ensuring that there's room for everyone. As you ascend to the main level, you'll be captivated by the expansive kitchen and family room with a linear fireplace. The kitchen boasts warm neutral tones, quartz countertops, a single bowl stainless sink, GE stainless steel appliances and a stylish tile backsplash, creating a sophisticated and inviting space for cooking and entertaining. The large island provides ample workspace and seating, while the kitchen opens to a spacious deck, perfect for enjoying the outdoors. This home has an amazing open concept featuring double doors in the family room that opens to the beautiful covered Juliette balcony.. The ...

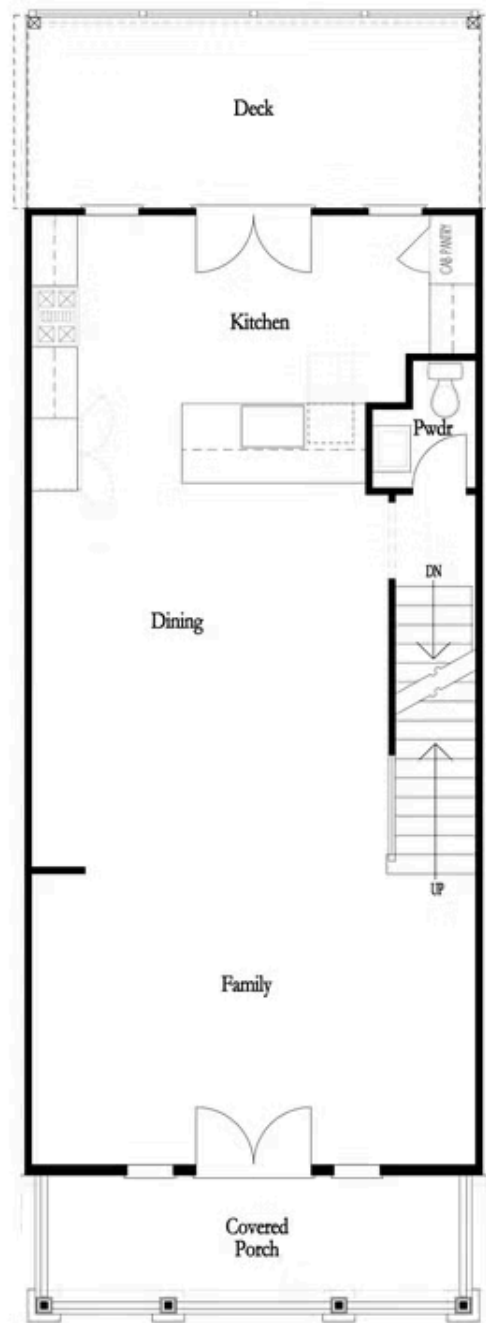
**Want to Know More  
About This Home?**

CONTACT OUR COMMUNITY SALES MANAGER  
Call Us @ 470.248.2103



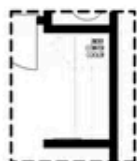
Want to Know More  
About This Home?

CONTACT OUR COMMUNITY SALES MANAGER  
Call Us @ 470.248.2103

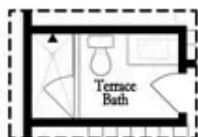


Want to Know More  
About This Home?

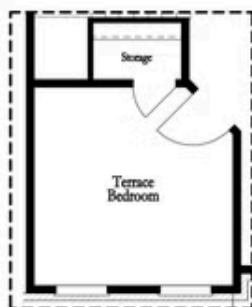
CONTACT OUR COMMUNITY SALES MANAGER  
Call Us @ 470.248.2103



Opt. Dry Bar



Opt. Shower Only



Opt. Terrace Bedroom

#### FIRST FLOOR

1,100 sq. ft. | 1,100 sq. ft.



Opt. Linear Fireplace



Opt. Fireplace

#### SECOND FLOOR

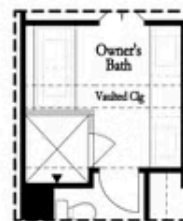
1,100 sq. ft. | 1,100 sq. ft.

#### OPTIONS

1,100 sq. ft.



Opt. Walk-In Shower



Opt. Freestanding Tub

#### THIRD FLOOR

1,100 sq. ft. | 1,100 sq. ft.

Want to Know More  
About This Home?

CONTACT OUR COMMUNITY SALES MANAGER  
Call Us @ 470.248.2103