





PRICED AT
\$538,650

-  1995 Sq Ft
-  3 Beds
-  3.5 Baths
-  2 Car Garage
-  3.0 Story

~~~ FALL INTO SAVINGS WITH \$15,000 ~~~ Customize your home buying journey - use it toward low rates, upgrades, appliances, closing costs & more w/Preferred Lenders. Ends October 31, 2025. Welcome to The Providence Group's Evanshire Community just seconds away from Downtown Duluth! Fall in love with our newest floorplan The Freemont where memories await. Upon entering, your raised foyer is just begging for a beautiful grand chandelier to dazzle and shimmer as a show stopping first impression. Welcome your friends and family into your new home where entertaining is easy and comfort is granted. OPEN CONCEPT LIVING at its finest with a Cool Linen design collection offering nice clean lines and bright flooring where your decorating dreams can come true with any color pallet you desire. A gas FIREPLACE to cozy up at during the cool winter nights where you can Netflix & Chill with your pups on a big comfy couch. Exit your Family Room to your ENLARGED DECK where plants thrive, morning coffee is sipped, and cocktails are shared. Wander over to your Kitchen right in front a huge window with natural light just pouring into the room making food preparation just a little more enjoyable. GE ...

Want to Know More  
About This Home?

CONTACT OUR COMMUNITY SALES MANAGER  
Call Us @ 470.248.2103



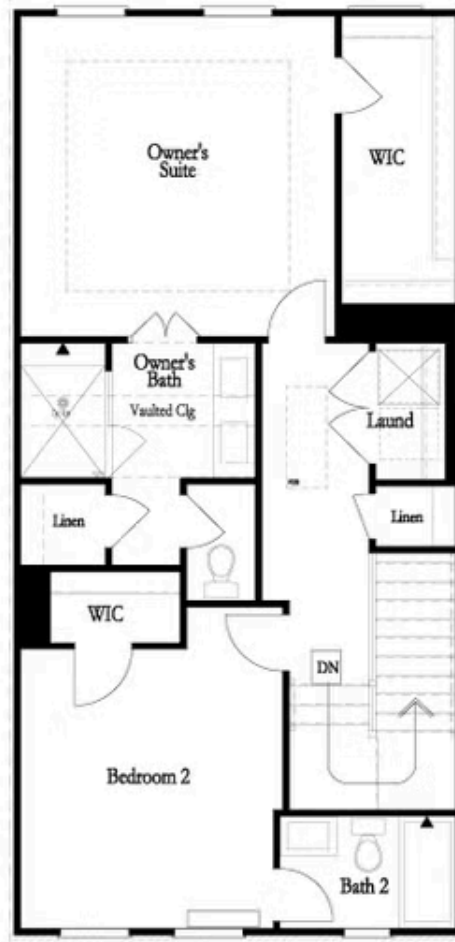
Want to Know More  
About This Home?

CONTACT OUR COMMUNITY SALES MANAGER  
Call Us @ 470.248.2103



Want to Know More  
About This Home?

CONTACT OUR COMMUNITY SALES MANAGER  
Call Us @ 470.248.2103



Want to Know More  
About This Home?

CONTACT OUR COMMUNITY SALES MANAGER  
Call Us @ 470.248.2103



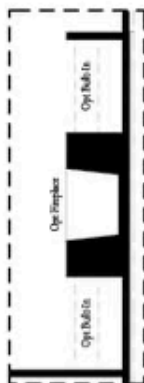
OPT Terrace Shower Only  
No Tub/Shower Combo



OPT Tub & Shower  
in Owner's Bath



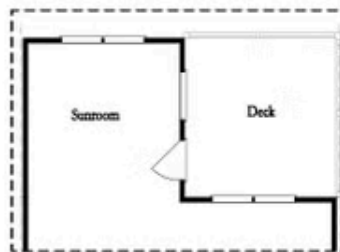
OPT Walk Through Shower  
in Owner's Bath



OPT Fireplace



OPT Linear Fireplace



OPT Sunroom

Want to Know More  
About This Home?

CONTACT OUR COMMUNITY SALES MANAGER  
Call Us @ 470.248.2103