




PRICED AT
\$521,150

 2096 Sq Ft

 3 Beds

 3.5 Baths

 2 Car Garage

 3.0 Story

~~~ SEASON OF SAVINGS ~~~ Build your Savings and Unwrap the Joy of a New Home with \$20k Promotion (The \$20,000 incentive has been applied.) Promotions can be applied towards a price reduction, upgraded appliances, closing cost, Rate-Buy down and more - giving you the flexibility to save where it matters most. Discover The Freemont by The Providence Group. MOVE-IN READY! - Ends December 31, 2025. The Freemont floor plan offers a haven of modern design and comfort in a three-story home. Step inside this beautifully designed home featuring an open-concept layout allowing for a seamless flow between the kitchen, dining area, and family room, making it ideal for entertaining guests or spending quality time with family. A cozy quartzite stacked fireplace anchors the family room, creating the perfect ambiance for cool winter evenings, while the adjacent deck provides an inviting space for outdoor gatherings. The sleek kitchen boasts a Cool Stone Design Collection featuring light gray cabinets, quartz countertops, and stainless-steel appliances, providing a clean and modern aesthetic that allows you to infuse your own personal style. Upstairs, the oversized owner's suite, offers a peaceful retreat with its large closet and luxurious bathroom featuring a dual vanity, tile shower, ...

**Want to Know More  
About This Home?**

CONTACT OUR COMMUNITY SALES MANAGER  
Call Us @ 470.248.2103



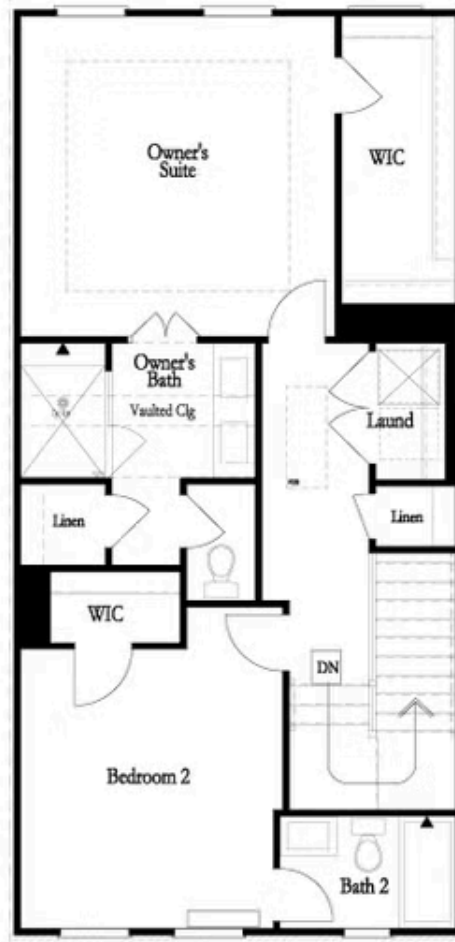
Want to Know More  
About This Home?

CONTACT OUR COMMUNITY SALES MANAGER  
Call Us @ 470.248.2103



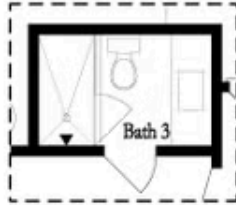
Want to Know More  
About This Home?

CONTACT OUR COMMUNITY SALES MANAGER  
Call Us @ 470.248.2103

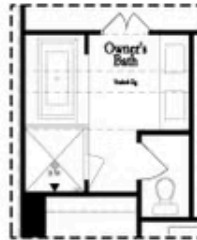


Want to Know More  
About This Home?

CONTACT OUR COMMUNITY SALES MANAGER  
Call Us @ 470.248.2103



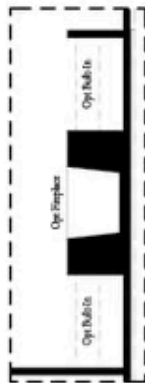
OPT Terrace Shower Only  
No Tub/Shower Combo



OPT Tub & Shower  
in Owner's Bath



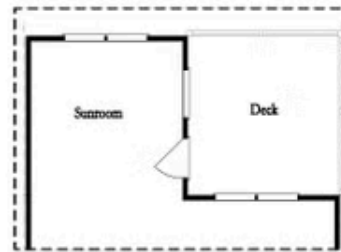
OPT Walk Through Shower  
in Owner's Bath



OPT Fireplace



OPT Linear Fireplace



OPT Sunroom

Want to Know More  
About This Home?

CONTACT OUR COMMUNITY SALES MANAGER  
Call Us @ 470.248.2103