




PRICED AT
\$573,650

 2096 Sq Ft

 3 Beds

 3.5 Baths

 2 Car Garage

 3.0 Story

~~~ Elevate Your Savings ~~~ ONLY 3-FREEMONT HOMES REMAIN! Enjoy \$25,000 Promotion on contracts written by end of March. Promotion can be applied towards a price reduction, closing costs, rate buydown and more giving you the flexibility to save where it matters most. Ends March 31, 2026. \$2,500 Broker Bonus on all Contracts written in March. The Freemont by The Providence Group - Move-In Ready End Unit! Experience the perfect blend of style, function, and privacy in this beautifully crafted three-story home. Thoughtfully designed for modern living, the Freemont Plan offers versatile spaces ideal for entertaining, working from home, or unwinding in comfort. Every bedroom includes its own private en-suite bathroom an exceptional feature that provides comfort and convenience for guests, roommates, or family members. This home showcases the stunning Warm Wheat Design Collection, highlighted by light cream cabinetry and contemporary finishes that create a fresh, timeless aesthetic throughout. Main Level Open, Bright, and Perfect for Entertaining. Enter through the welcoming foyer and step up into an expansive open-concept main level. The gourmet kitchen features an L-shaped island, GE Profile stainless steel appliances, quartz countertops, and a stylish tile backsplash. Seamlessly connected dining and family rooms make hosting effortless. A ...

**Want to Know More  
About This Home?**

CONTACT OUR COMMUNITY SALES MANAGER  
Call Us @ 470.248.2103



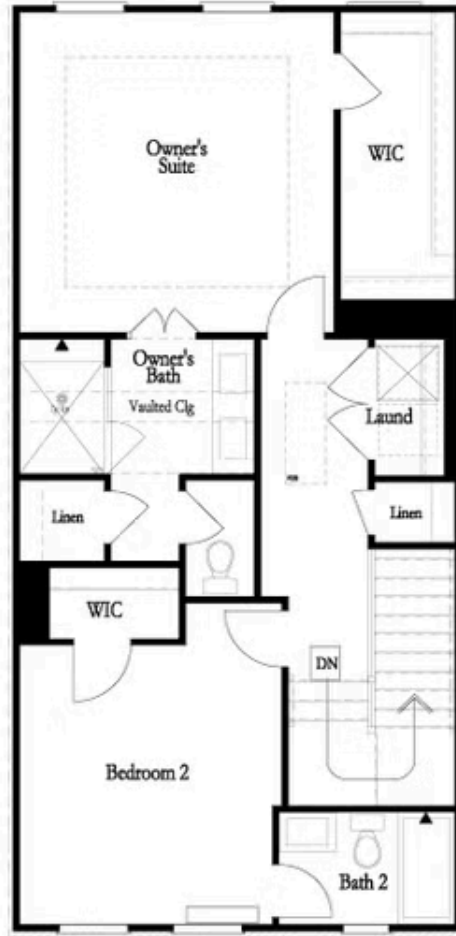
Want to Know More  
About This Home?

CONTACT OUR COMMUNITY SALES MANAGER  
Call Us @ 470.248.2103



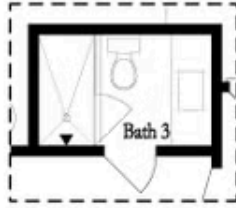
Want to Know More  
About This Home?

CONTACT OUR COMMUNITY SALES MANAGER  
Call Us @ 470.248.2103



Want to Know More  
About This Home?

CONTACT OUR COMMUNITY SALES MANAGER  
Call Us @ 470.248.2103



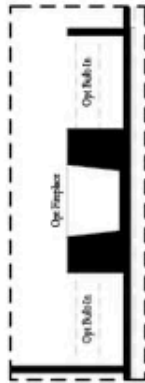
OPT Terrace Shower Only  
 No Tub/Shower Combo



OPT Tub & Shower  
 in Owner's Bath



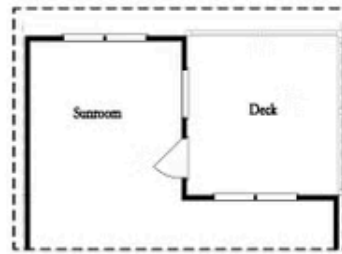
OPT Walk-Through Shower  
 in Owner's Bath



OPT Fireplace



OPT Linear Fireplace



OPT Sunroom

Want to Know More  
 About This Home?

CONTACT OUR COMMUNITY SALES MANAGER  
 Call Us @ 470.248.2103