




PRICED AT  
**\$593,150**

 2495 Sq Ft

 3 Beds

 3.5 Baths

 2 Car Garage

 3.0 Story

Come check out the Autry Home design by The Providence Group in a brand new community one mile from downtown Duluth! The Autry END UNIT is a beautiful floor plan with large bedrooms and an outstanding kitchen. When you open the front door, you are greeted by a beautiful foyer and a large room that could be a wonderful flex space and a full bath. You will be amazed by the large kitchen and family room. The kitchen opens to a large deck, the perfect place to start or end your day! From the kitchen, you have direct views to the dining and family room with fireplace. The 3rd floor offers the owner's suite that has an awesome closet and bathroom. Big windows in the bedroom allow all the natural light to flow in. Additionally, there are 2 secondary bedrooms and a shared bath. The HOA maintains the exterior of the building so easy living for you. The pool and pool house are under construction and will be ready to enjoy in 2024! Before you know it, you will be making friends with your neighbors and then having dinner in Downtown Duluth. Photos are not of actual home but of ...

Want to Know More  
About This Home?

CONTACT OUR COMMUNITY SALES MANAGER  
Call Us @ 470.248.2103



Want to Know More  
About This Home?

CONTACT OUR COMMUNITY SALES MANAGER  
Call Us @ 470.248.2103



Want to Know More  
About This Home?

CONTACT OUR COMMUNITY SALES MANAGER  
Call Us @ 470.248.2103

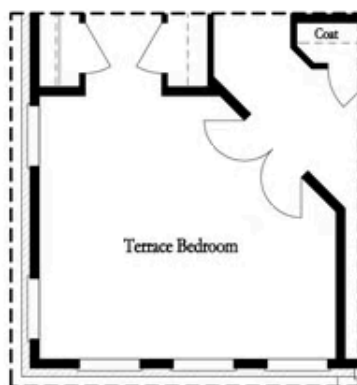


Third Floor  
3-Bedroom Layout

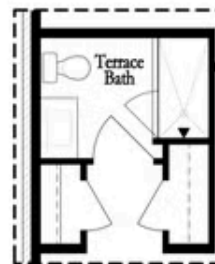
Want to Know More  
About This Home?

CONTACT OUR COMMUNITY SALES MANAGER  
Call Us @ 470.248.2103

### Options

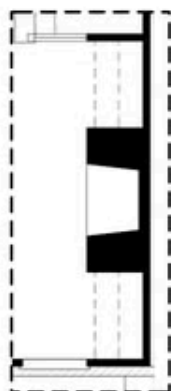


Optional Terrace Bedroom

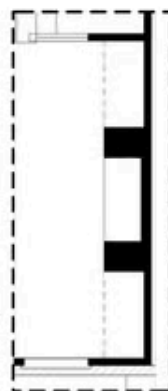


Optional Shower Only

### First Floor Options



Optional Fireplace



Optional Linear  
Fireplace

### Second Floor Options

Want to Know More  
About This Home?

CONTACT OUR COMMUNITY SALES MANAGER  
Call Us @ 470.248.2103



### THIRD FLOOR OPTIONS



Optional Walk-In Shower



Optional Shower w/ Free Standing  
Tub Combo

Want to Know More  
About This Home?

CONTACT OUR COMMUNITY SALES MANAGER  
Call Us @ 470.248.2103