



PRICED AT
\$530,400

 **2073 Sq Ft**

 **3 Beds**

 **4.0 Baths**

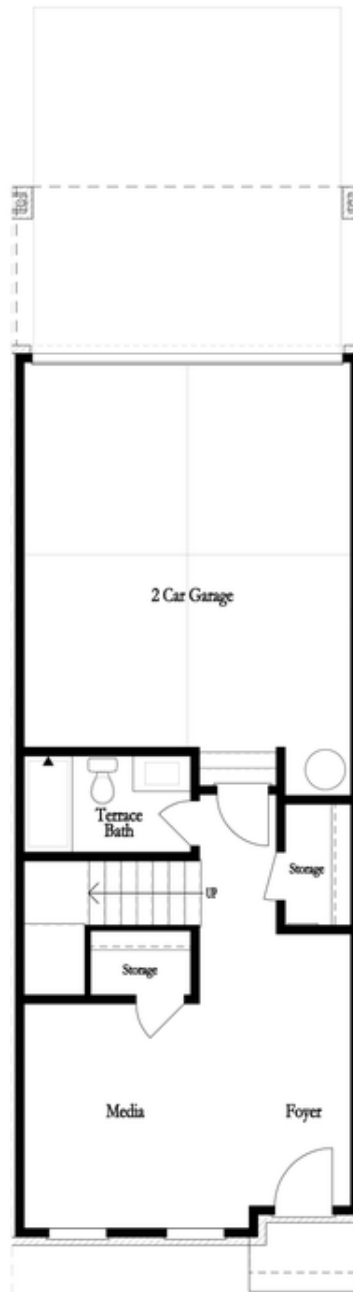
 **2 Car Garage**

 **3.0 Story**

New Year, New Home, New You! Elevate your life in 2024 with a new home by The Providence Group in a brand-new community one mile from downtown Duluth! The Garrison is Move-In Ready, a beautiful floor plan with 3 bedrooms and 4 bathrooms. Enough space for everyone! Terrace level entry into a beautiful foyer and a large room that could be a wonderful flex space or 4th bedroom. There is a private bath on this level with a walk-in tile shower. On the main floor, you will find a bedroom with full bath tucked away making this a perfect guest suite. The main floor also offers a large, well-designed kitchen that is open to the family room and dining area. The family room has double doors that open to a large deck, the perfect place to start or end your day! Head up to the 3rd floor where you find a very spacious owner's retreat with a large walk-in closet and a luxurious bathroom with dual vanity, soaking tub and tiled shower. The additional bedroom upstairs has a tray ceiling and includes its own walk-in closet and private bath. Big windows in the bedroom allow all the natural light to ...

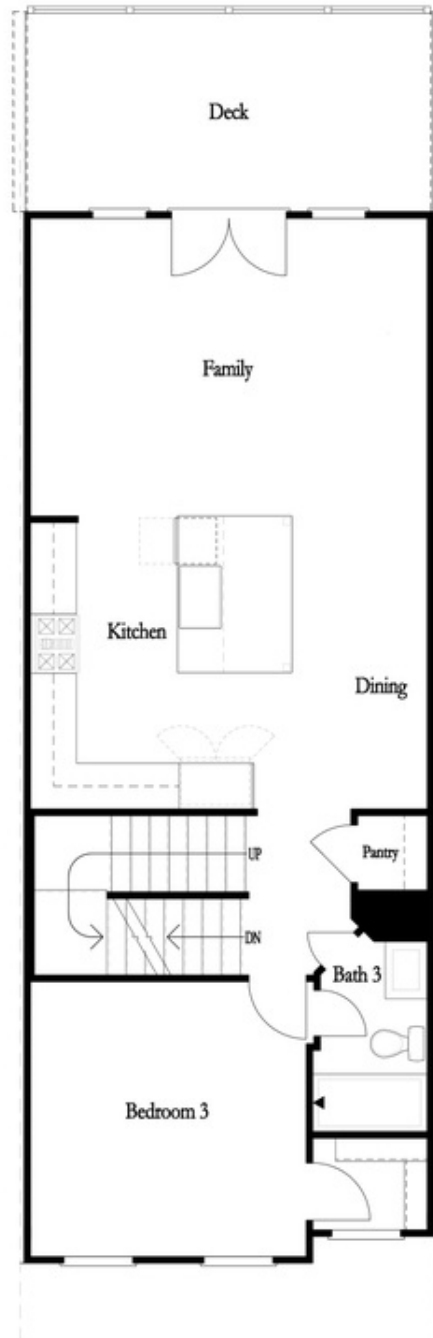
**Want to Know More
About This Home?**

CONTACT OUR COMMUNITY SALES MANAGER
Call Us @ 470.248.2103



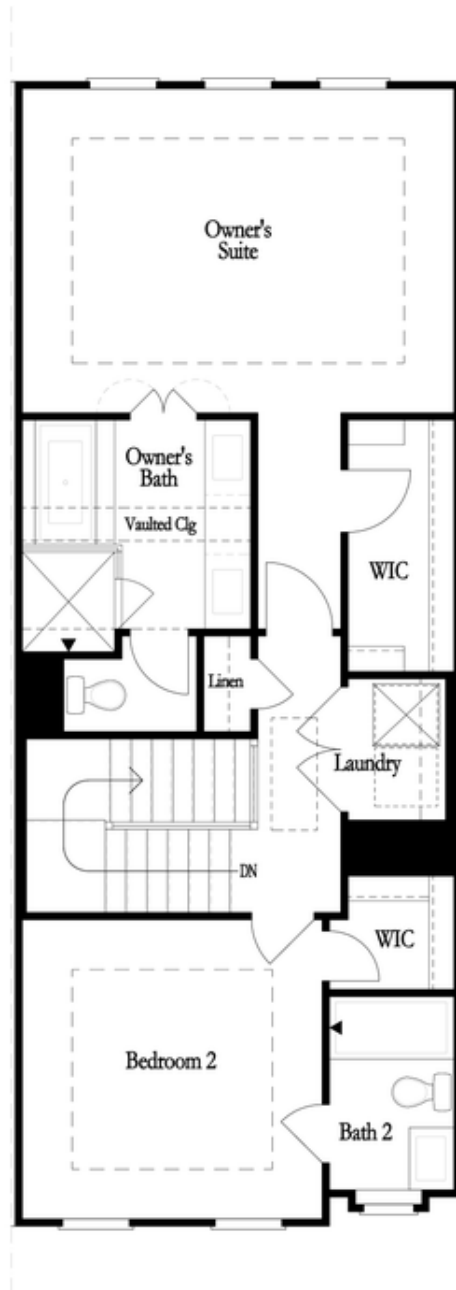
Want to Know More
About This Home?

CONTACT OUR COMMUNITY SALES MANAGER
Call Us @ 470.248.2103



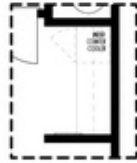
Want to Know More
About This Home?

CONTACT OUR COMMUNITY SALES MANAGER
Call Us @ 470.248.2103

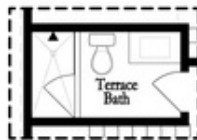


Want to Know More
About This Home?

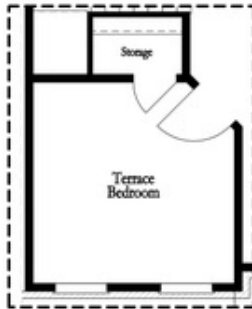
CONTACT OUR COMMUNITY SALES MANAGER
Call Us @ 470.248.2103



Opt. Dry Bar



Opt. Shower Only



Opt. Terrace Bedroom

FIRST FLOOR



Opt. Linear Fireplace



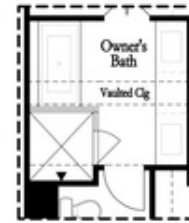
Opt. Fireplace

SECOND FLOOR

OPTIONS



Opt. Walk-In Shower



Opt. Freestanding Tub

THIRD FLOOR

Want to Know More
 About This Home?

CONTACT OUR COMMUNITY SALES MANAGER
 Call Us @ 470.248.2103