



PRICED AT  
**\$557,150**

 2091 Sq Ft

 3 Beds

 3.5 Baths

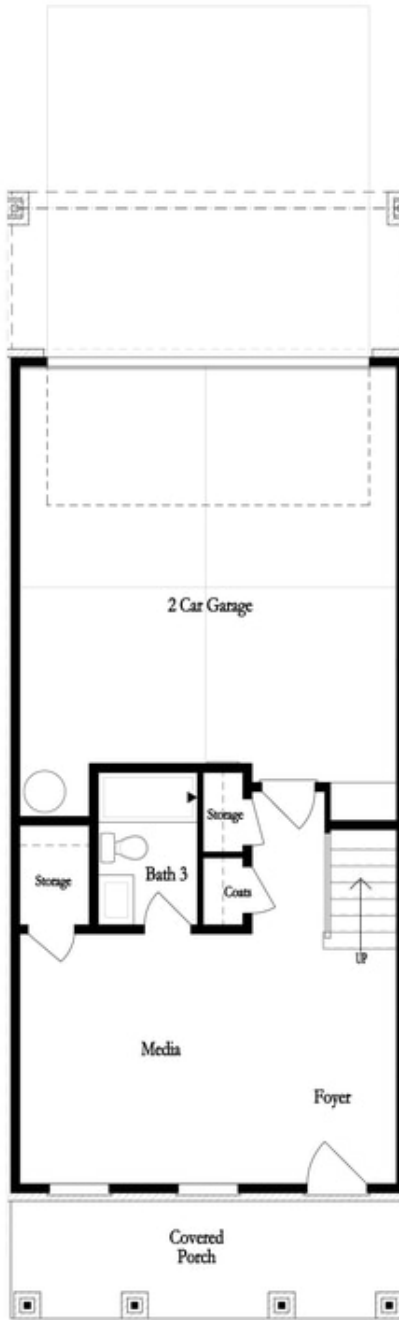
 2 Car Garage

 3.0 Story

Amazing Townhome design: The Sherwood is a beautiful floor plan with large bedrooms and an outstanding kitchen. When you open the front door, you are greeted by a beautiful foyer that opens up to a bedroom or it would make a really cool office. Upstairs, you truly have an open floor plan. Natural light flows through the home all during the day. The family room features a cozy fireplace. You will have the best setup for entertaining or holiday fun! Upstairs offer the owners suite that has an awesome large closet and a luxurious bath with separate frameless shower and a soaking tub. The additional bedroom upstairs is huge with its own walk in closet and private bathroom. 2 covered porches and a deck giving you tons of space for enjoying the outdoors. The HOA maintains the exterior of the building so easy living for you. The pool and pool house are under construction and will be ready to enjoy in 2024! Before you know it, you will be making friends with your neighbors then having dinner in Downtown Duluth. For driving directions, you can use 2978 Hwy 120 Duluth GA 30096. Photos are not of actual home but of ...

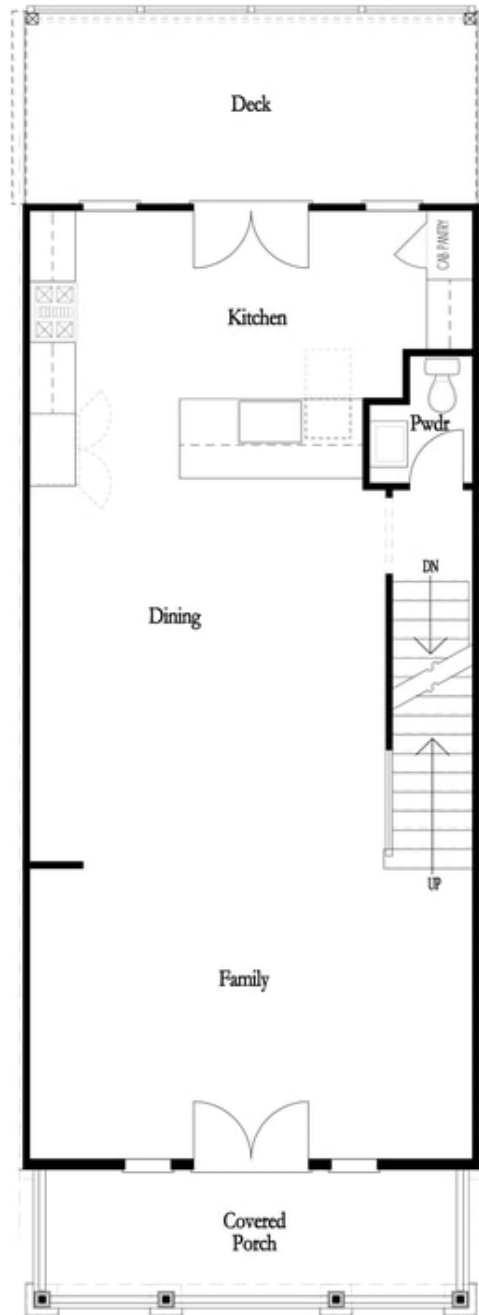
Want to Know More  
About This Home?

CONTACT OUR COMMUNITY SALES MANAGER  
Call Us @ 470.248.2103



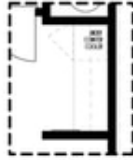
**Want to Know More  
About This Home?**

CONTACT OUR COMMUNITY SALES MANAGER  
Call Us @ 470.248.2103

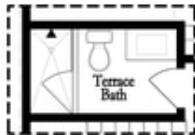


**Want to Know More  
About This Home?**

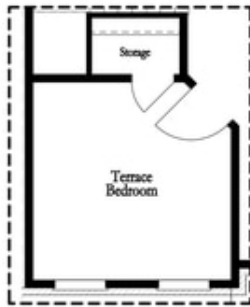
CONTACT OUR COMMUNITY SALES MANAGER  
Call Us @ 470.248.2103



Opt. Dry Bar



Opt. Shower Only



Opt. Terrace Bedroom

FIRST FLOOR



Opt. Linear Fireplace

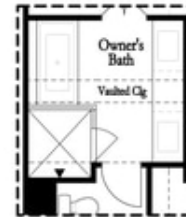


Opt. Fireplace

SECOND FLOOR



Opt. Walk-In Shower



Opt. Freestanding Tub

THIRD FLOOR

OPTIONS

**Want to Know More  
 About This Home?**

CONTACT OUR COMMUNITY SALES MANAGER  
 Call Us @ 470.248.2103