







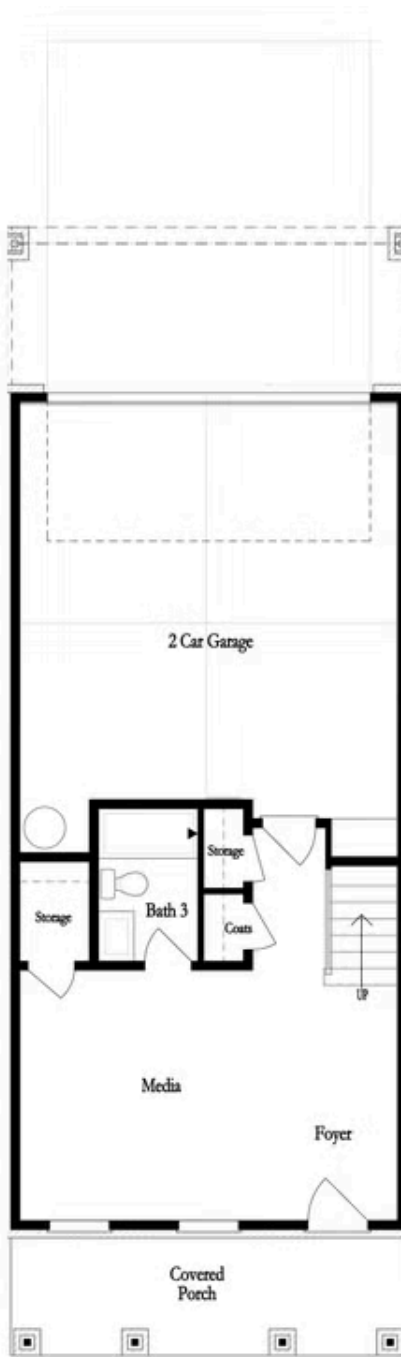
PRICED AT
\$566,650

-  2091 Sq Ft
-  3 Beds
-  3.5 Baths
-  2 Car Garage
-  3.0 Story

New Year, New Home, New You! Elevate your life in 2024 with a new home by The Providence Group and \$5,000 towards closing cost with one of our Preferred Lenders. Welcome to Evanshire and the Sherwood home design. Through the terrace level entry, you find a beautiful foyer with hard surface floors. Double doors lead to the terrace bedroom & private bath. The main floor has an amazing open concept featuring more double doors that lead to a front porch and double doors leading to the rear deck - offering you tons of outdoor living space. The kitchen has warm, neutral tones with stained cabinets, 3x12 neutral tile backsplash & pretty quartz countertops. The open dining area is big enough for hosting dinner parties while the family room features a cozy fireplace for chilly fall nights. You will find the owners suite on the upper floor along with an additional secondary bedroom and private bath. The owner's suite has a large walk-in closet and a luxurious mega, tiled shower. Enjoy an easy lifestyle while The HOA maintains the landscape and exterior of the building. The pool and pool house are under construction and will be ready to enjoy in 2024! ...

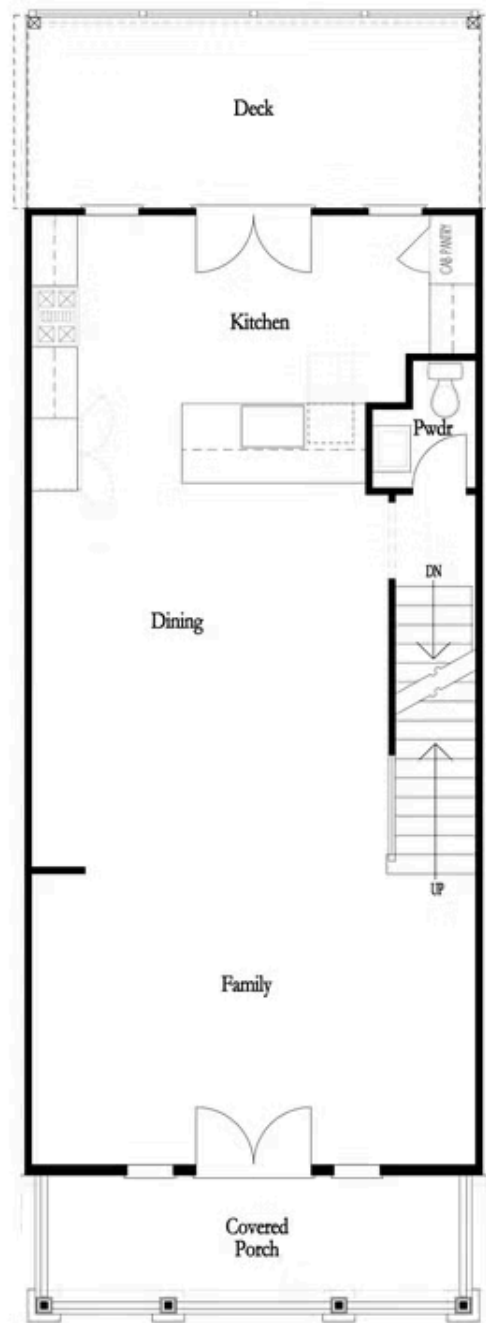
Want to Know More
About This Home?

CONTACT OUR COMMUNITY SALES MANAGER
Call Us @ 470.248.2103



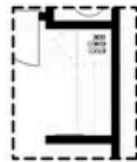
Want to Know More
About This Home?

CONTACT OUR COMMUNITY SALES MANAGER
Call Us @ 470.248.2103

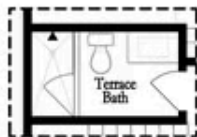


Want to Know More
About This Home?

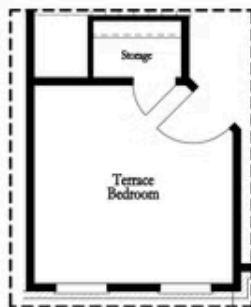
CONTACT OUR COMMUNITY SALES MANAGER
Call Us @ 470.248.2103



Opt. Dry Bar



Opt. Shower Only



Opt. Terrace Bedroom

FIRST FLOOR

1,100 sq. ft. (est.)



Opt. Linear Fireplace



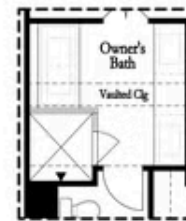
Opt. Fireplace

SECOND FLOOR

1,100 sq. ft. (est.)



Opt. Walk-In Shower



Opt. Freestanding Tub

THIRD FLOOR

1,100 sq. ft. (est.)

OPTIONS

1,100 sq. ft. (est.)

Want to Know More
About This Home?

CONTACT OUR COMMUNITY SALES MANAGER
Call Us @ 470.248.2103