



PRICED AT
\$557,150

 2091 Sq Ft

 3 Beds

 3.5 Baths

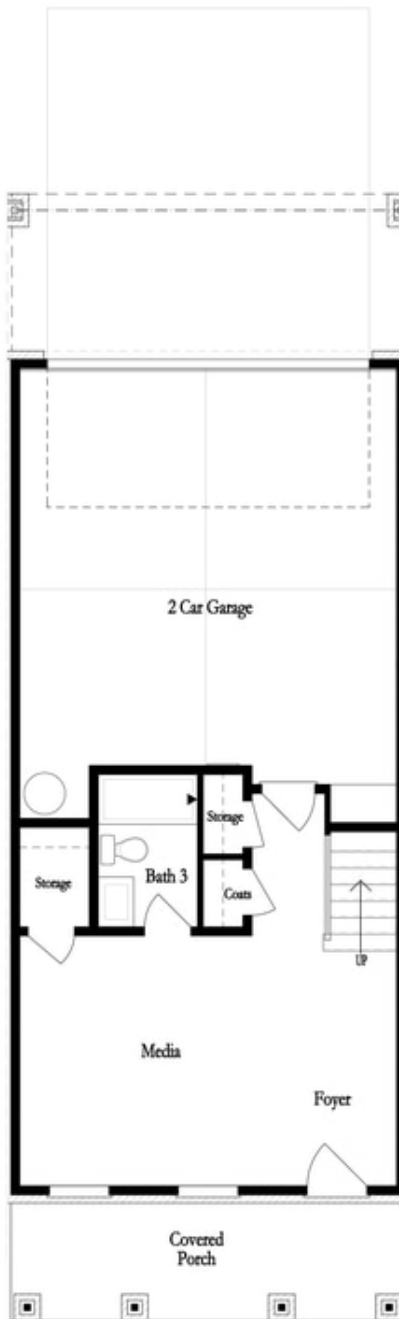
 2 Car Garage

 3.0 Story

New Year, New Home, New You! Elevate your life in 2024 with a new home by The Providence Group and \$5,000 towards closing cost with one of our Preferred Lenders. Come live in a Gated Neighborhood w/Low Maintenance Living at its best. HOA Maintained Exteriors, Lawn Care and more. The Sherwood is a beautiful floor plan with large bedrooms and an outstanding kitchen. When you open the front door, you are greeted by a beautiful wide foyer that leads to a bedroom & private bath, a great space for guests or it would make a really large office. Upstairs, you truly have an open floor plan. Natural light flows through the home all during the day. The family room features a cozy fireplace with stacked white quartzite. The kitchen has a modern feel with white cabinets, 3x8 white subway tile and a beautiful dark quartz countertop - truly stunning. This open floor plan provides the best setup for entertaining or holiday fun! Head upstairs to the owners suite that has an awesome large closet, tray ceiling and a luxurious bath with a frameless shower and separate soaking tub. The additional bedroom upstairs is huge with its own walk in closet ...

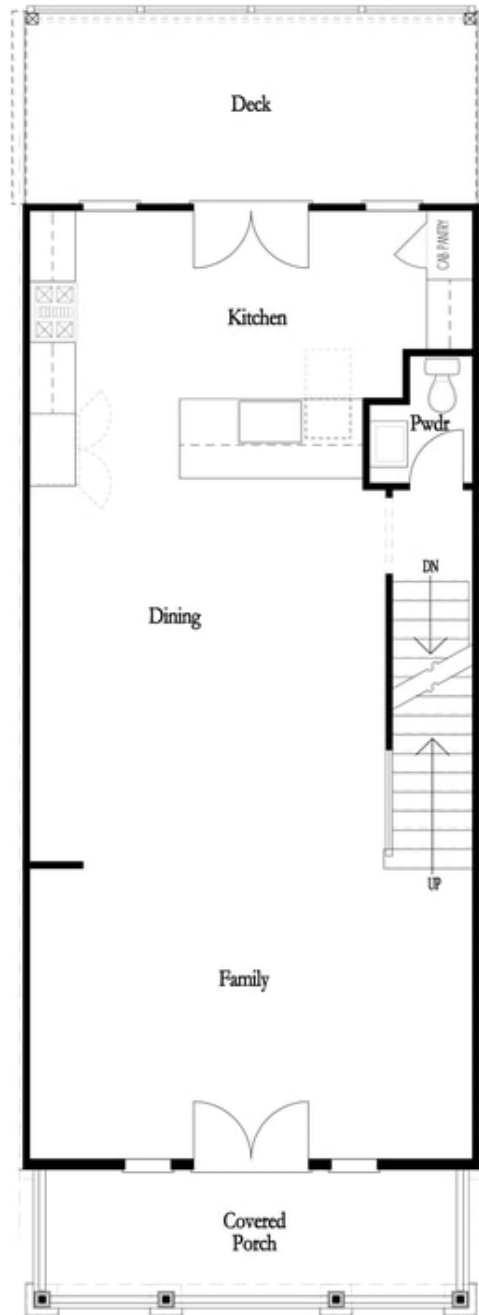
**Want to Know More
About This Home?**

CONTACT OUR COMMUNITY SALES MANAGER
Call Us @ 470.248.2103



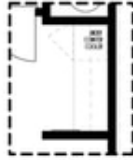
**Want to Know More
About This Home?**

CONTACT OUR COMMUNITY SALES MANAGER
Call Us @ 470.248.2103

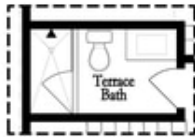


**Want to Know More
About This Home?**

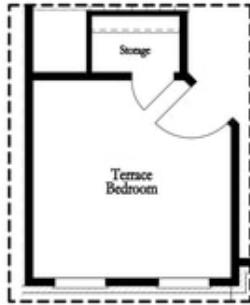
CONTACT OUR COMMUNITY SALES MANAGER
Call Us @ 470.248.2103



Opt. Dry Bar



Opt. Shower Only



Opt. Terrace Bedroom

FIRST FLOOR



Opt. Linear Fireplace

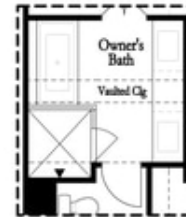


Opt. Fireplace

SECOND FLOOR



Opt. Walk-In Shower



Opt. Freestanding Tub

THIRD FLOOR

OPTIONS

**Want to Know More
 About This Home?**

CONTACT OUR COMMUNITY SALES MANAGER
 Call Us @ 470.248.2103