



PRICED AT
\$616,400

 2030 Sq Ft

 4 Beds

 3.5 Baths

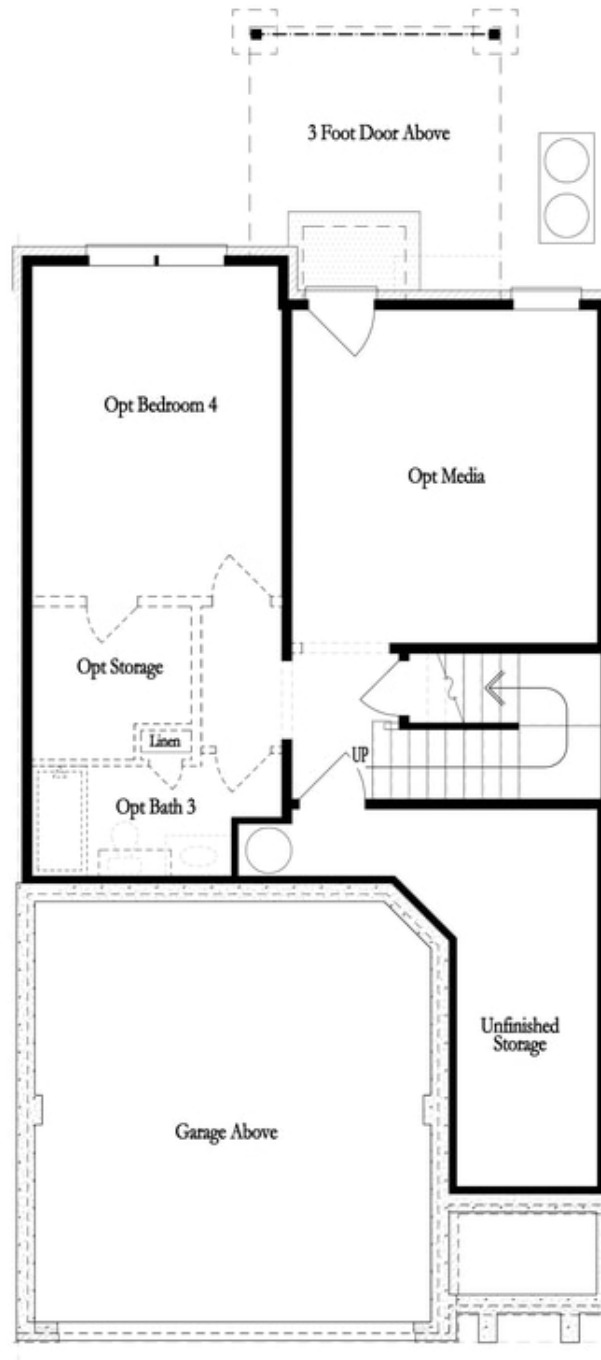
 2 Car Garage

 3.0 Story

Fabulous Fall Savings!!! * \$15k ANY WAY YOU WANT** when purchasing in September and using one of our 5-preferred lenders!*** Featuring the highly sought after Stockton plan. Upon entering the home, you step into a welcoming foyer that seamlessly transitions into the open-concept main floor featuring a family room, kitchen, and dining area is designed to maximize space and foster a sense of connectivity and flow between different living areas. The kitchen is equipped with stainless steel appliances, including a stove, vent hood, dishwasher, and microwave, all seamlessly integrated into the cabinetry for a sleek and cohesive look. The quartz countertops provide plenty of space for meal prep and serving. Stone colored cabinets with sleek hardware offer ample storage for cookware, utensils, and pantry items, keeping the space neat and organized. A large, oversized island provides a spot for casual dining and overlooks the family room. The rear, covered porch provides a versatile space for relaxation, entertainment and enjoying the outdoors in comfort. As you ascend the staircase to the upper level of the townhome, you're greeted by the spacious and inviting primary bedroom. The room is located at the rear of the house, offering privacy and tranquility away from ...

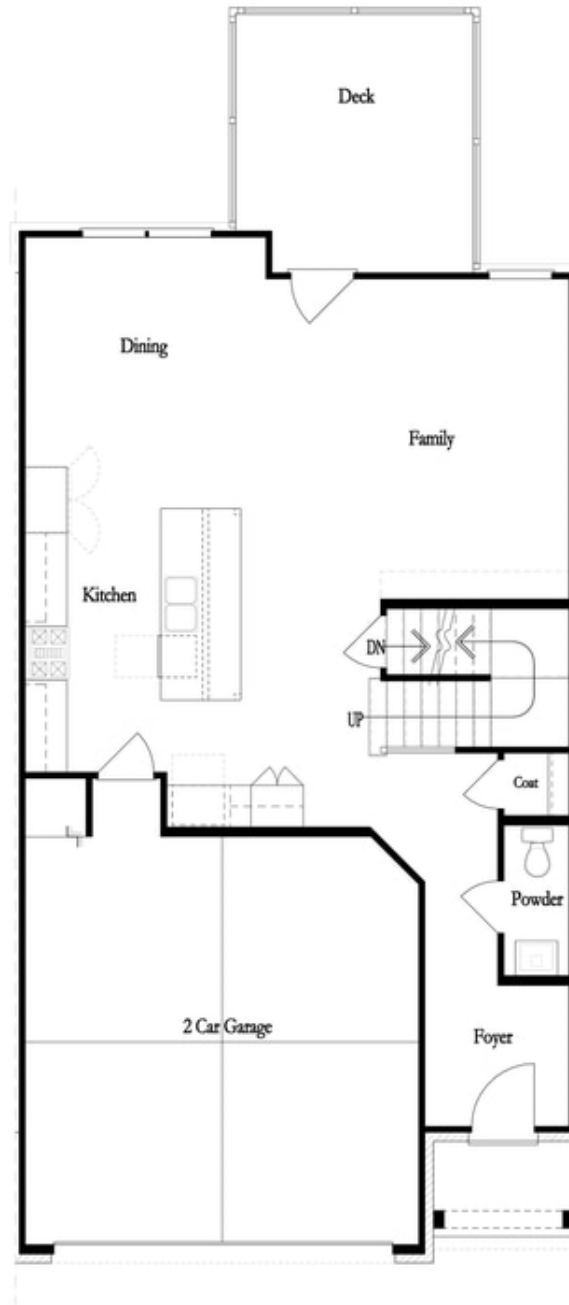
**Want to Know More
About This Home?**

CONTACT OUR COMMUNITY SALES MANAGER
Call Us @ 470.248.2103



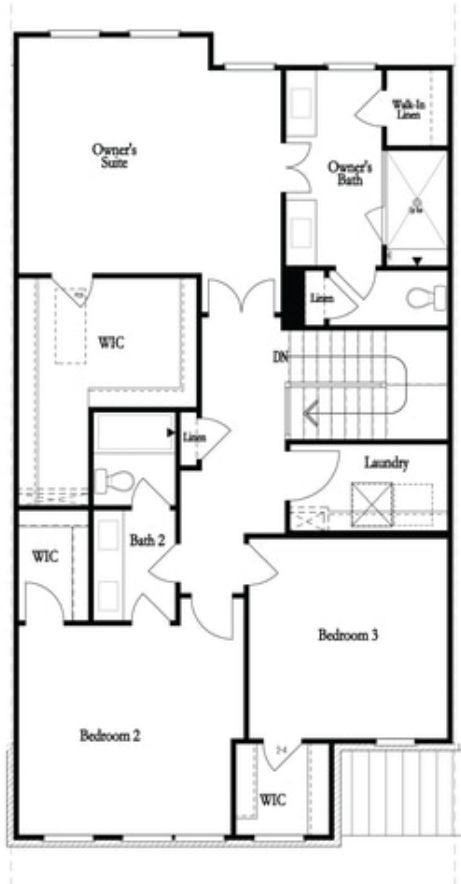
**Want to Know More
About This Home?**

CONTACT OUR COMMUNITY SALES MANAGER
Call Us @ 470.248.2103

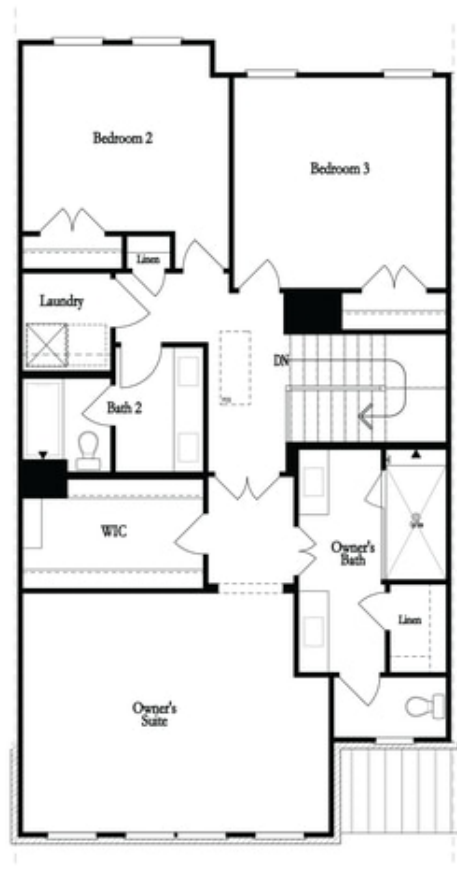


**Want to Know More
About This Home?**

CONTACT OUR COMMUNITY SALES MANAGER
Call Us @ 470.248.2103



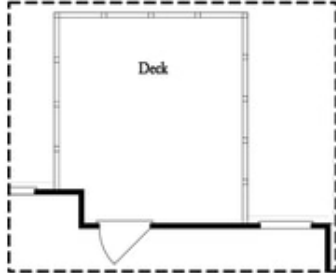
Second Floor - Owner's Rear



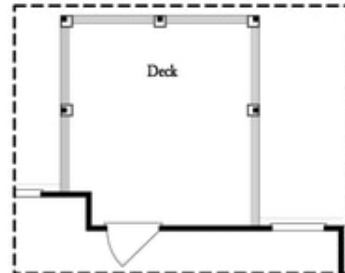
Second Floor - Owner's Front

**Want to Know More
 About This Home?**

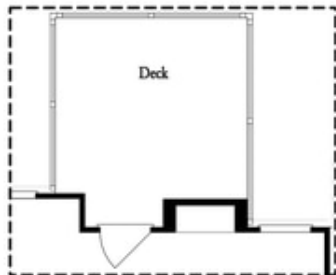
CONTACT OUR COMMUNITY SALES MANAGER
 Call Us @ 470.248.2103



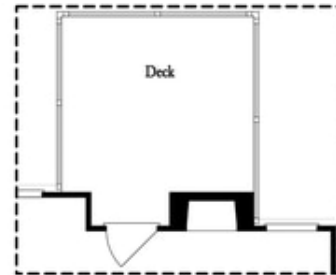
Opt. Screened Porch



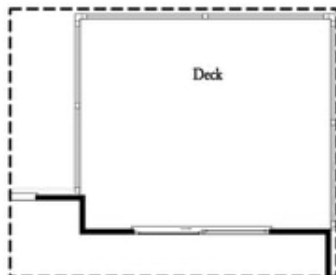
Opt. Covered Porch



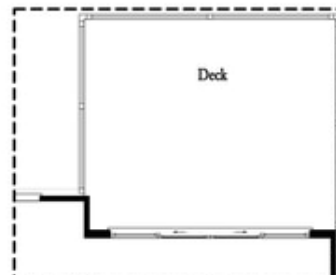
Opt. Linear Fireplace



Opt. Fireplace



Opt. 8' Slider Door

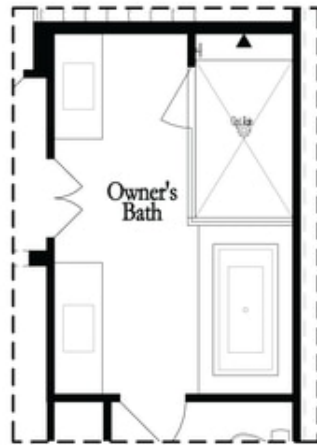


Opt. 12' Slider

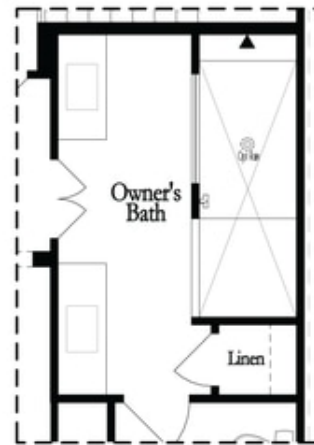
OPTIONS
FIRST FLOOR

**Want to Know More
About This Home?**

CONTACT OUR COMMUNITY SALES MANAGER
Call Us @ 470.248.2103

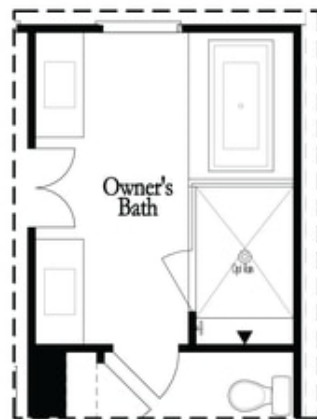


Opt. Shower/Tub

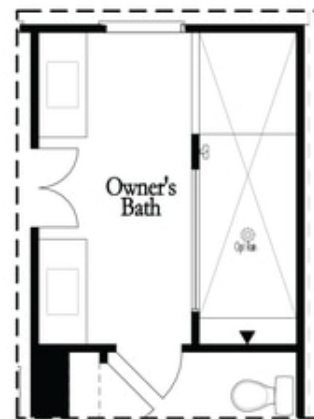


Opt. Walk-Through Shower

Owner's Front - Options



Opt. Shower/Tub



Opt. Walk-Through Shower

Owner's Rear - Options

**Want to Know More
 About This Home?**

CONTACT OUR COMMUNITY SALES MANAGER
 Call Us @ 470.248.2103