



PRICED AT
\$637,070

 2010 Sq Ft

 3 Beds

 2.5 Baths

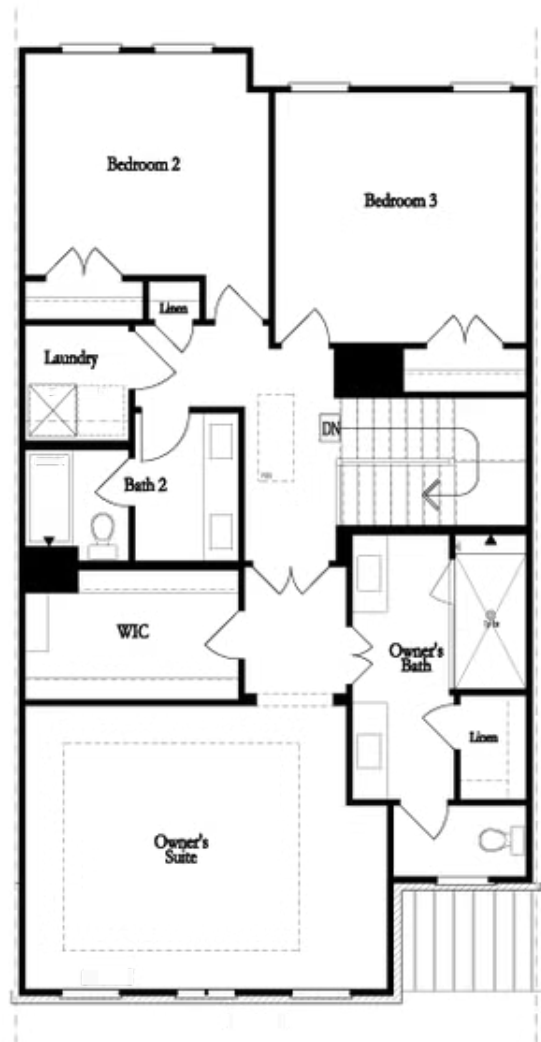
 2 Car Garage

 2.0 Story

~~~ FALL INTO SAVINGS ~~~ For a Limited Time Only - \$25k ANY WAY YOU WANT when purchasing with one of our 5-preferred lenders!\*\*\* The MOVE IN READY Stockton floor plan built BY THE PROVIDENCE GROUP, a haven of modern design and comfort. This home offers a perfect blend of style and functionality. You'll be captivated by the expansive kitchen and family room. The kitchen boasts cool tones, quartz countertops, a single bowl stainless sink, GE stainless steel appliances and a stylish tile backsplash, creating a sophisticated and inviting space for cooking and entertaining. Step through the massive 12' ALL GLASS SLIDING DOORS onto the large deck, perfect for outdoor gatherings. On the upper level, the expansive owner's suite awaits, offering a tranquil retreat after a busy day. Indulge in the luxury of the owner's tiled MEGA WALK-IN SHOWER w/DRY OFF AREA, washing away the stress of the day. Two additional bedrooms with walk-in closets and a shared bath completes the upper level. The unfinished terrace level presents endless possibilities to adapt to your lifestyle needs. With the HOA maintaining the exterior of the building, residents can enjoy easy living without the hassle of yard work or maintenance tasks. Located ...

Want to Know More  
About This Home?

CONTACT OUR COMMUNITY SALES MANAGER  
Call Us @ 470.248.2103

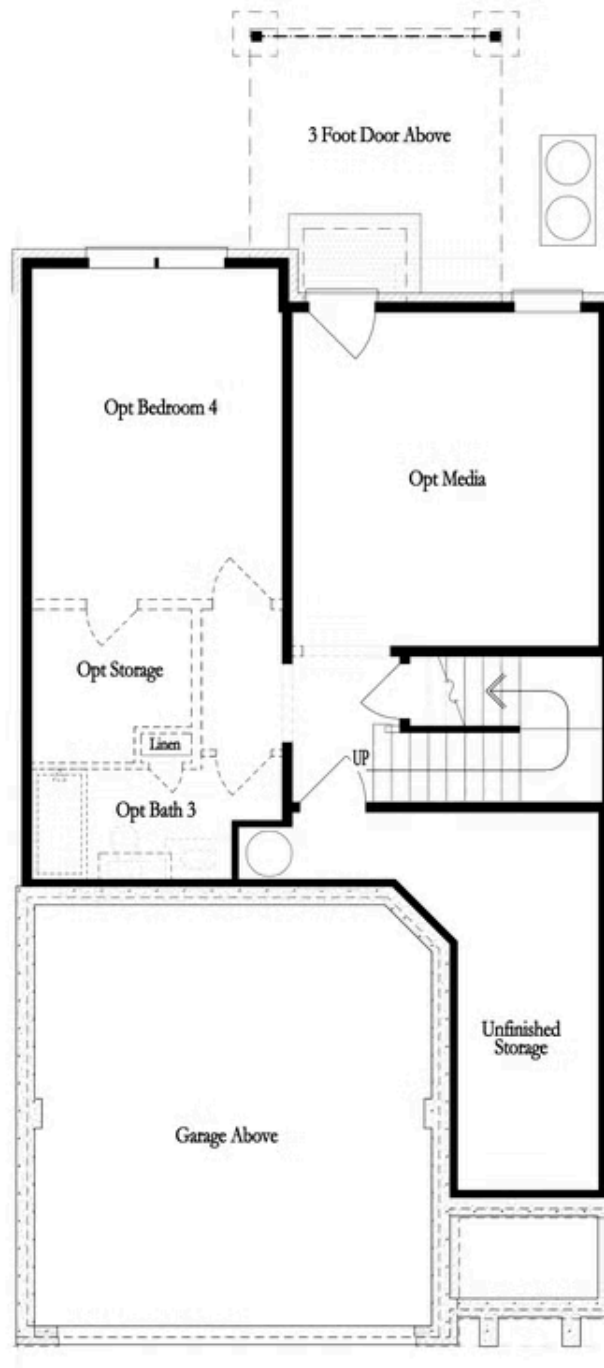


Second Floor  
(Owner's Front)

Elevations G, H, J1, J3 & L

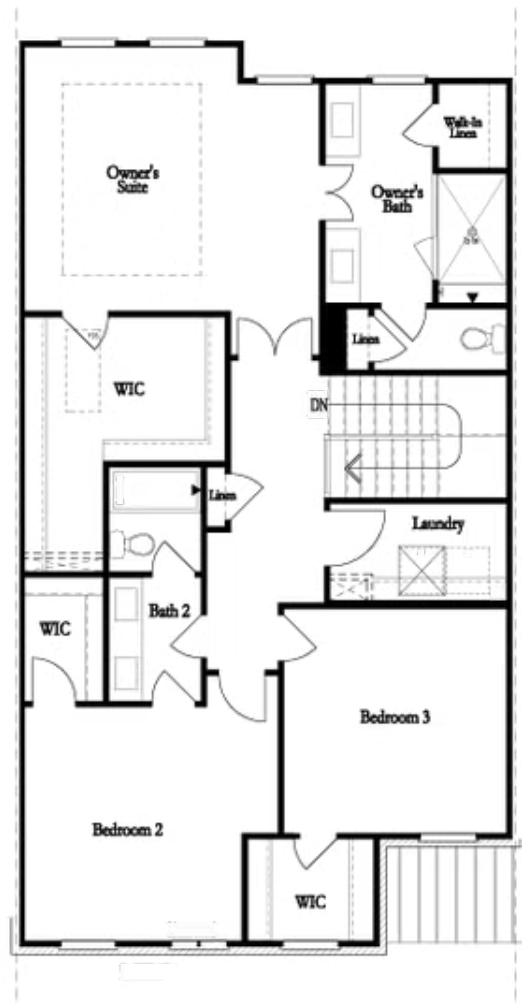
Want to Know More  
About This Home?

CONTACT OUR COMMUNITY SALES MANAGER  
Call Us @ 470.248.2103



Want to Know More  
About This Home?

CONTACT OUR COMMUNITY SALES MANAGER  
Call Us @ 470.248.2103

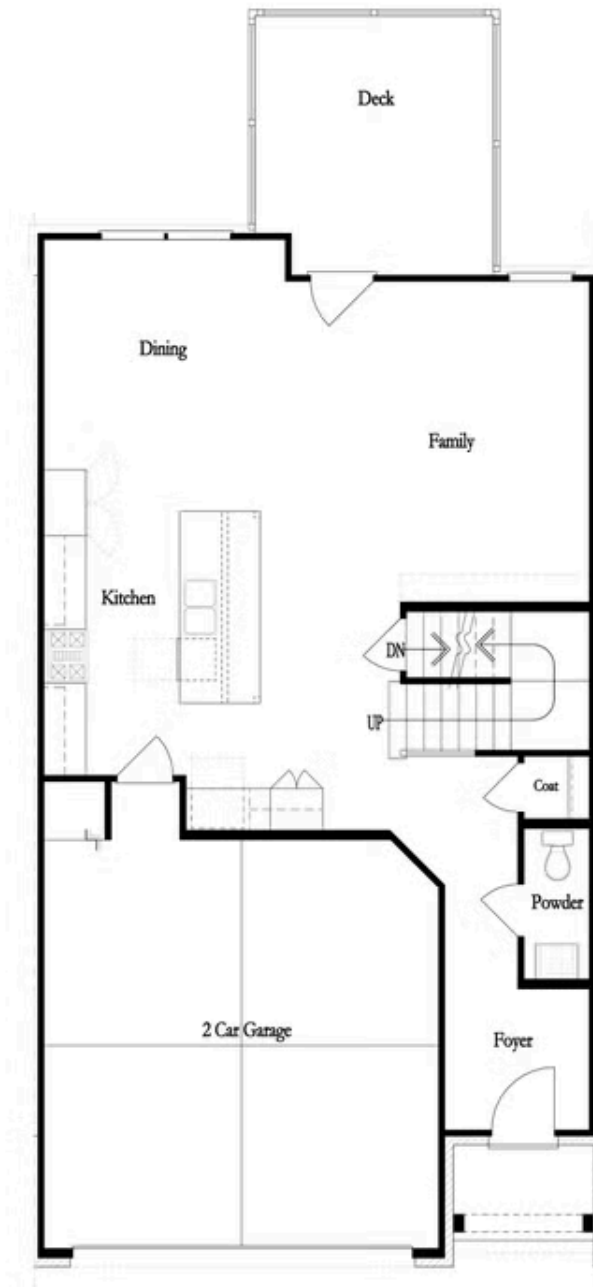


Second Floor  
(Owner's Rear)

Elevations G, H, J1, J3 & L

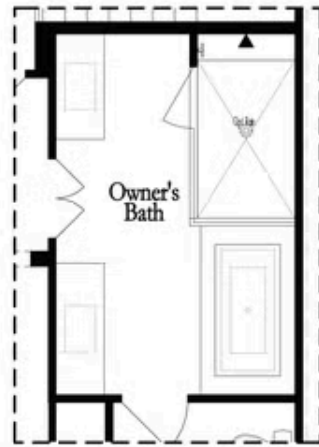
Want to Know More  
About This Home?

CONTACT OUR COMMUNITY SALES MANAGER  
Call Us @ 470.248.2103

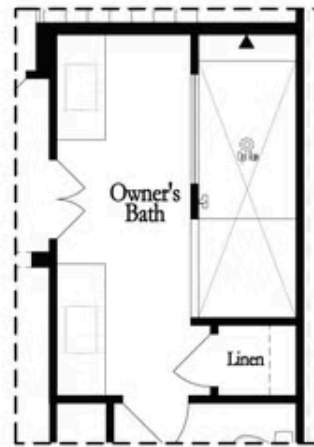


Want to Know More  
About This Home?

CONTACT OUR COMMUNITY SALES MANAGER  
Call Us @ 470.248.2103

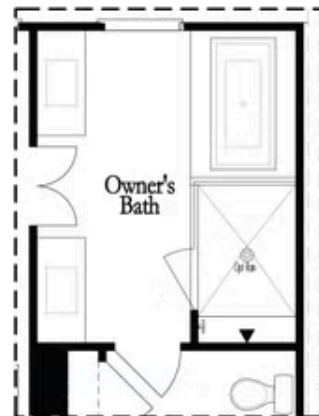


Opt. Shower/Tub



Opt. Walk-Through Shower

Owner's Front - Options



Opt. Shower/Tub

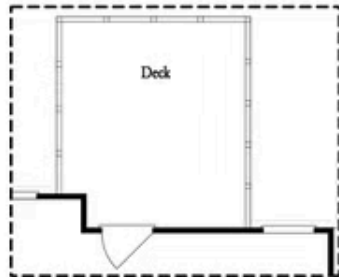


Opt. Walk-Through Shower

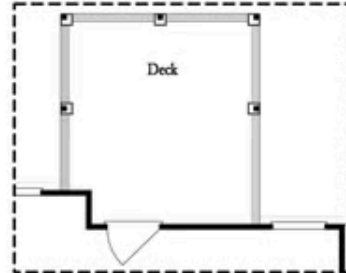
Owner's Rear - Options

Want to Know More  
About This Home?

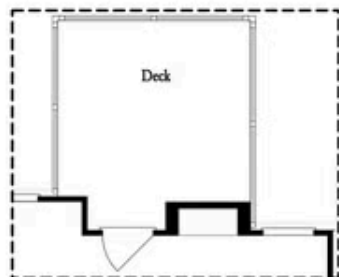
CONTACT OUR COMMUNITY SALES MANAGER  
Call Us @ 470.248.2103



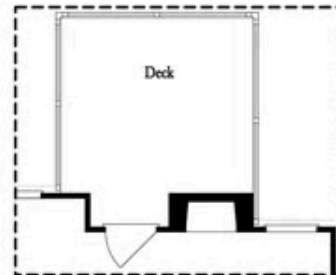
Opt. Screened Porch



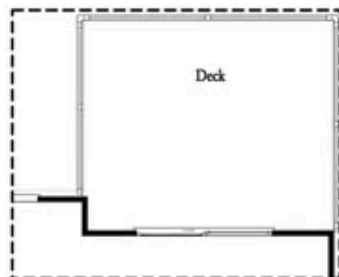
Opt. Covered Porch



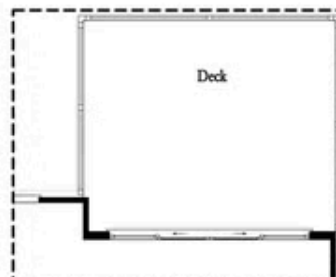
Opt. Linear Fireplace



Opt. Fireplace



Opt. 8' Slider Door



Opt. 12' Slider

OPTIONS  
FIRST FLOOR

Want to Know More  
About This Home?

CONTACT OUR COMMUNITY SALES MANAGER  
Call Us @ 470.248.2103