




PRICED FROM
\$538,650

 1,982 - 2,096 Sq Ft

 3 Beds

 3.5 Baths

 2 Car Garage

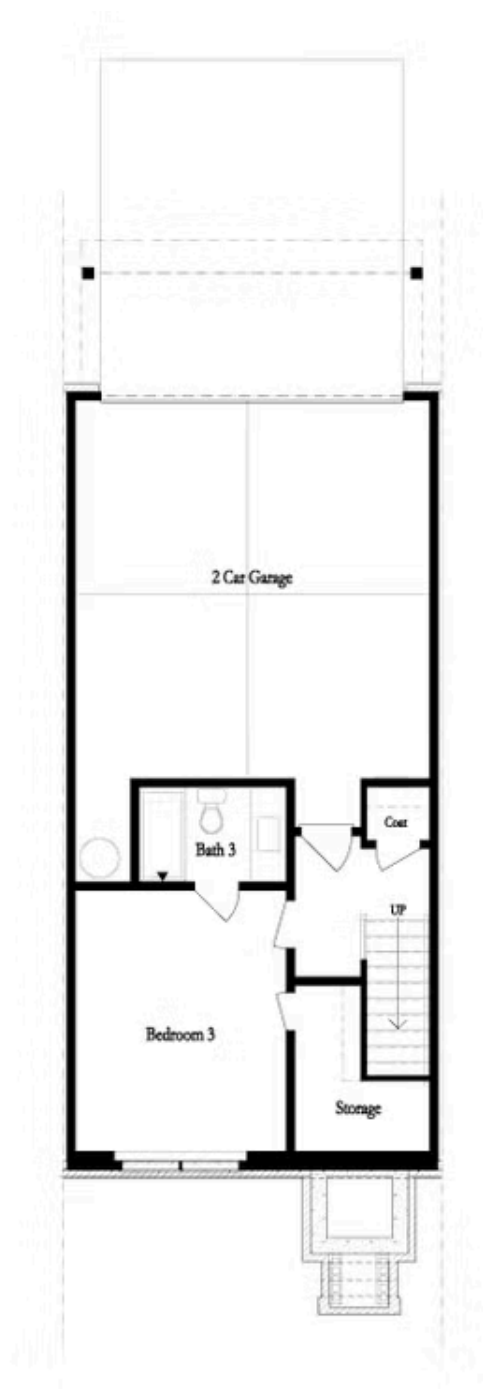
 3.0 Story

- Breakfast Bar on Kitchen Peninsula
- Open Main Level with Kitchen Overlooking Dining Room and Family Room
- Spacious Owner's Suite with Large Walk-In Closet & Vaulted Ceilings in Bath
- Secondary Bedrooms Feature Personal Full Bath
- Private Bedrooms with Guest Suite on Terrace
- 2-Car Garage

[Read More Online](#)

Available Elevations





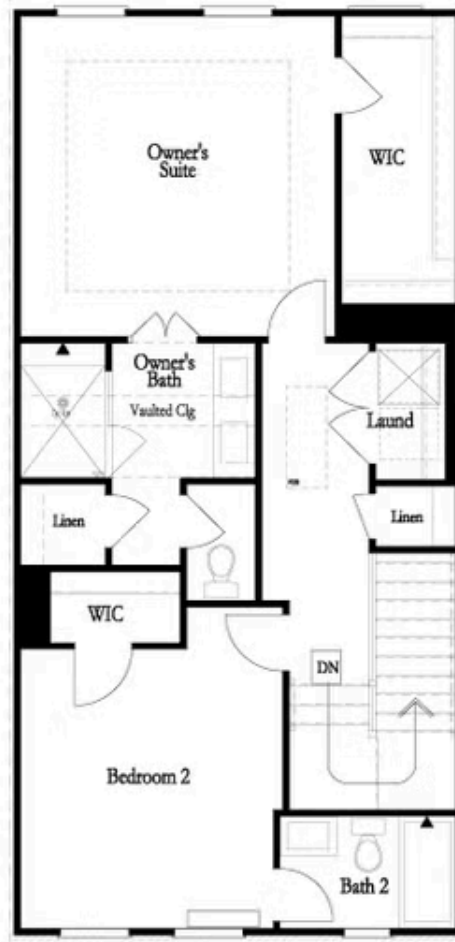
Want to Know More
About This Home?

CONTACT OUR COMMUNITY SALES MANAGER
Call Us @ 470.248.2103



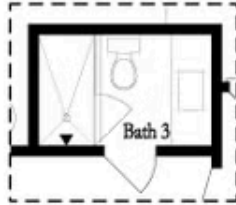
Want to Know More
About This Home?

CONTACT OUR COMMUNITY SALES MANAGER
Call Us @ 470.248.2103

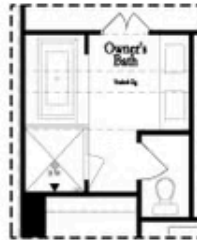


Want to Know More
About This Home?

CONTACT OUR COMMUNITY SALES MANAGER
Call Us @ 470.248.2103



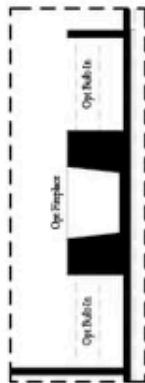
OPT Terrace Shower Only
No Tub/Shower Combo



OPT Tub & Shower
in Owner's Bath



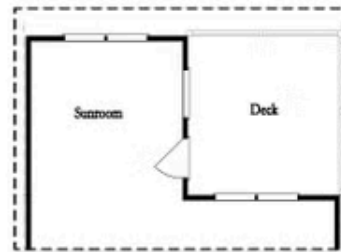
OPT Walk Through Shower
in Owner's Bath



OPT Fireplace



OPT Linear Fireplace



OPT Sunroom

Want to Know More
About This Home?

CONTACT OUR COMMUNITY SALES MANAGER
Call Us @ 470.248.2103