



PRICED AT  
**\$653,400**

 2010 Sq Ft

 3 Beds

 2.5 Baths

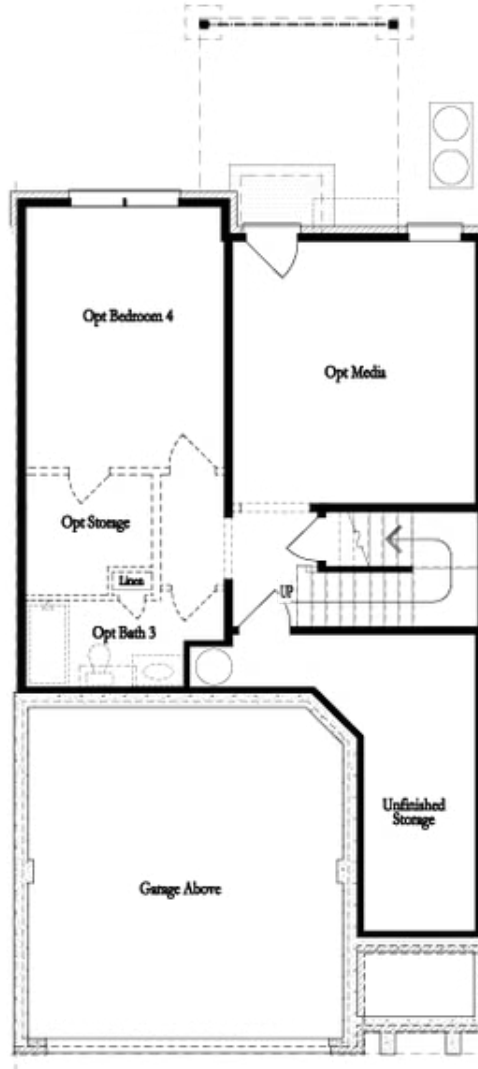
 2 Car Garage

 3.0 Story

~~~ FALL INTO SAVINGS WITH 50% BASEMENT FINISHING ~~~ Ends October 31, 2025. Welcome to Evanshire just moments from the Downtown Duluth happenings. This GATED COMMUNITY featuring POOL and MAINTAINED LANDSCAPE is the perfect spot to call home. Built by THE PROVIDENCE GROUP, this 2-story townhome END UNIT sitting on an unfinished basement is where your next life's journey begins. TREE LINE VIEWS off your COVERED DECK offering privacy and beautiful nature to zen out too after a long day of work. Come on in as you enter the home through the private foyer where your friends turn the corner and see your OPEN CONCEPT LIVING space at its finest. Massive island with quartz countertops great for entertaining with added accent pendant lights for ambiance. Drop off your groceries from the garage entry just off the kitchen making your errands that much easier. View to the cozy Family Room where you won't miss a beat of that exciting game when getting dinner ready for the family. With all the extra windows, there's a ton of natural light pouring into the home where you'll watch the summer leaves turn in Fall colors. The Design Collection captures the natural essence of the ...

**Want to Know More  
About This Home?**

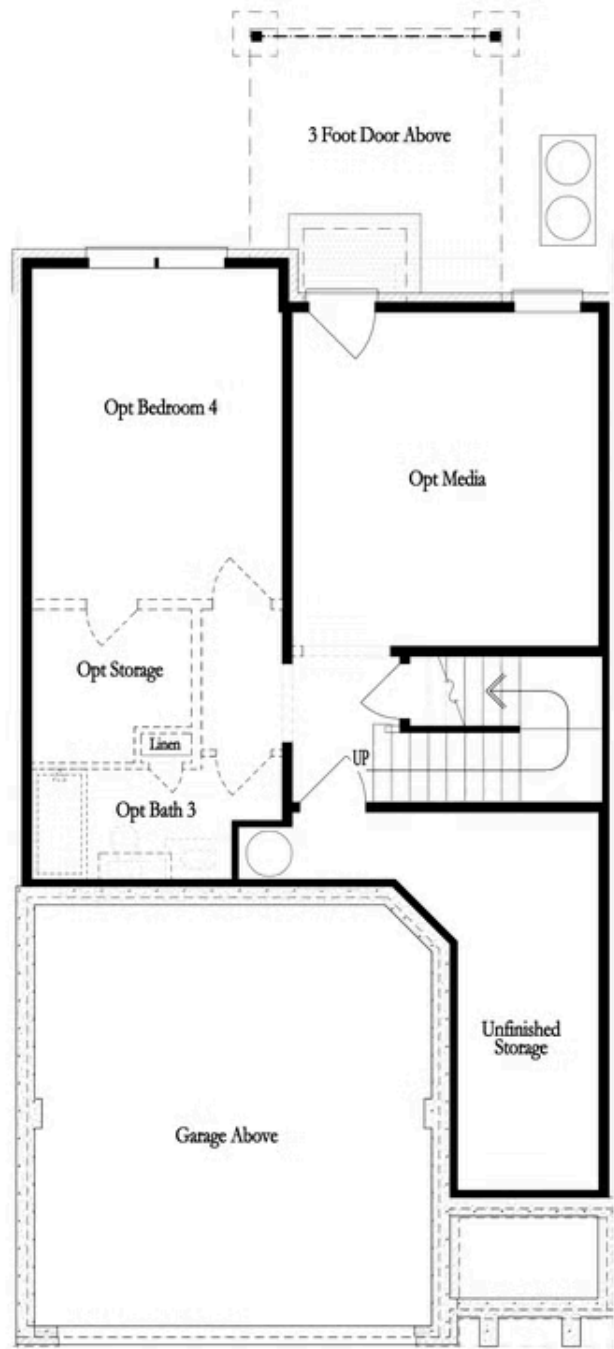
CONTACT OUR COMMUNITY SALES MANAGER  
Call Us @ 470.248.2103



**Unfinished Basement**

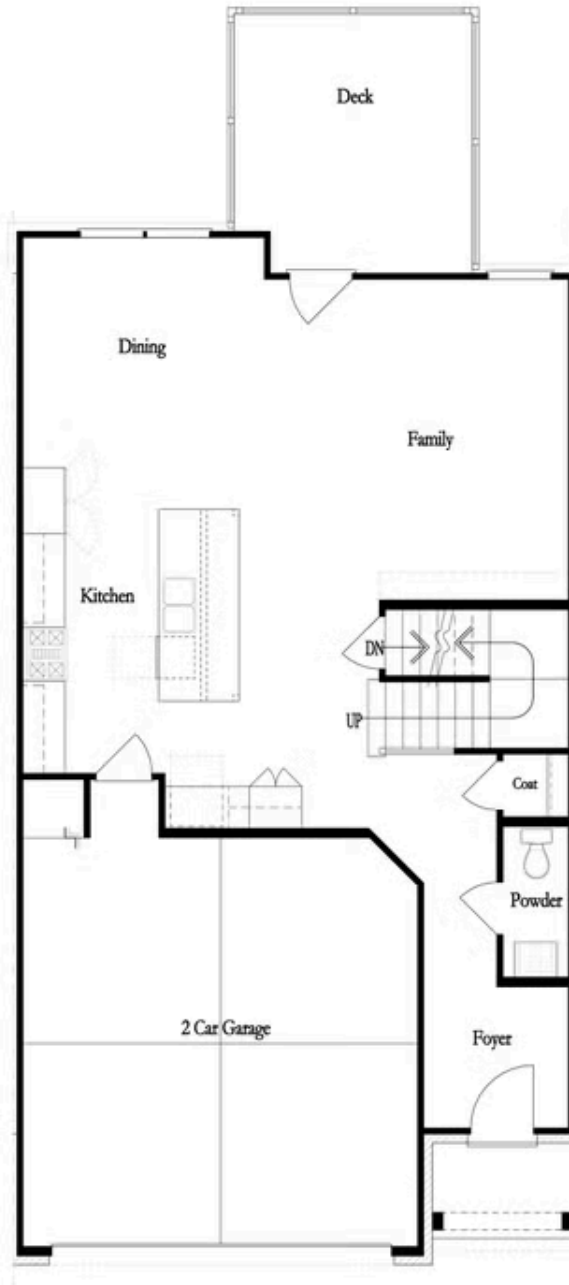
**Want to Know More  
About This Home?**

CONTACT OUR COMMUNITY SALES MANAGER  
Call Us @ 470.248.2103



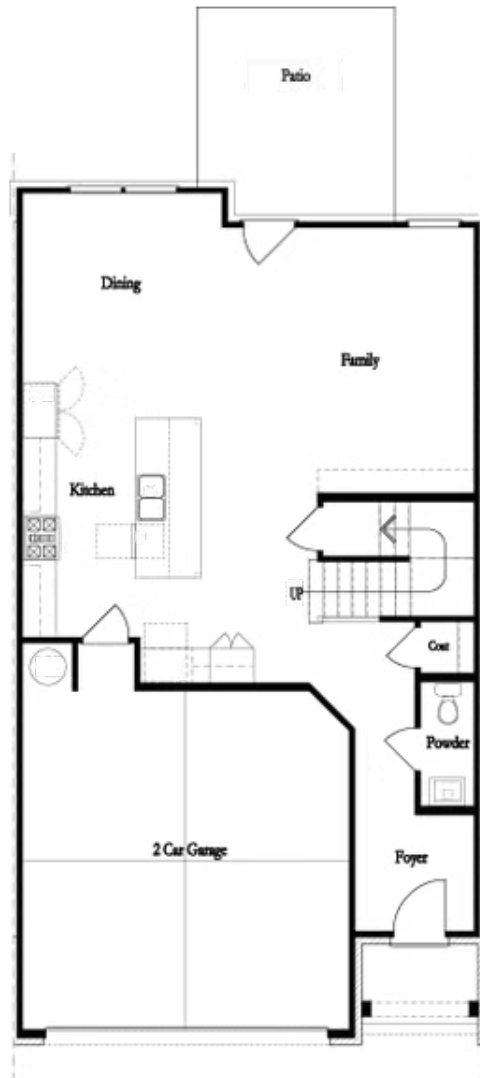
Want to Know More  
About This Home?

CONTACT OUR COMMUNITY SALES MANAGER  
Call Us @ 470.248.2103



Want to Know More  
About This Home?

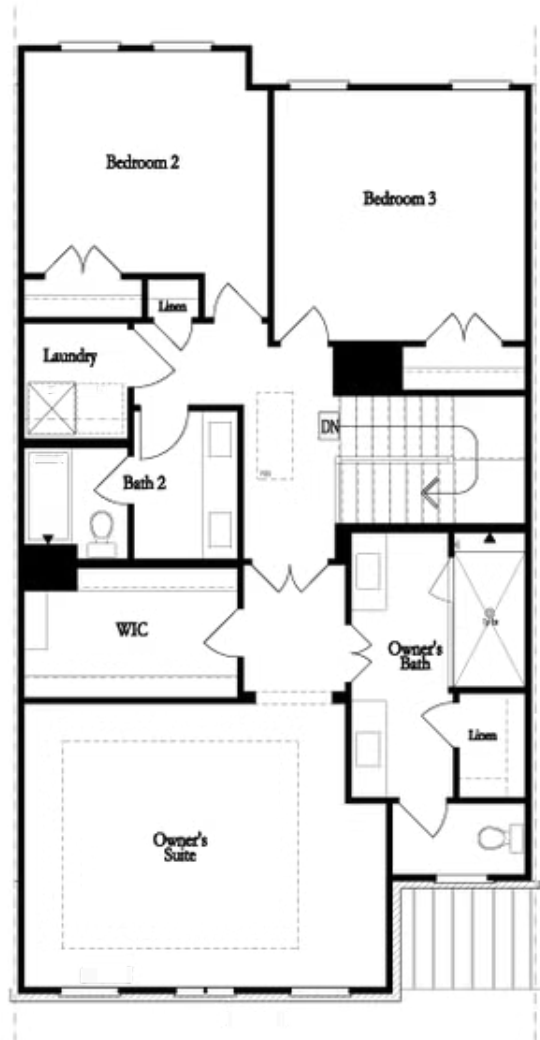
CONTACT OUR COMMUNITY SALES MANAGER  
Call Us @ 470.248.2103



**First Floor**

**Want to Know More  
About This Home?**

CONTACT OUR COMMUNITY SALES MANAGER  
Call Us @ 470.248.2103

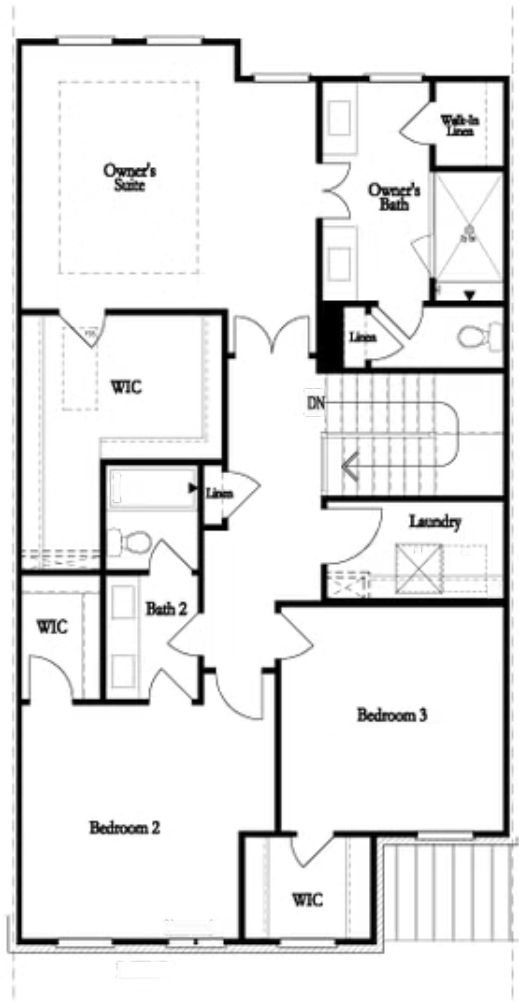


Second Floor  
(Owner's Front)

Elevations G, H, JI, J3 & L

Want to Know More  
About This Home?

CONTACT OUR COMMUNITY SALES MANAGER  
Call Us @ 470.248.2103

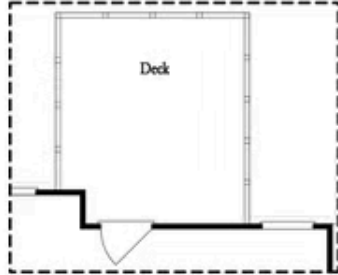


Second Floor  
(Owner's Rear)

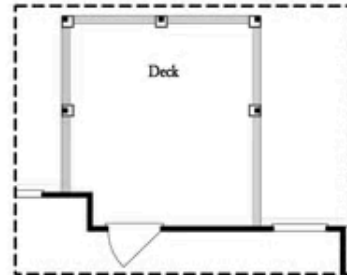
Elevations G, H, JI, J3 & L

Want to Know More  
About This Home?

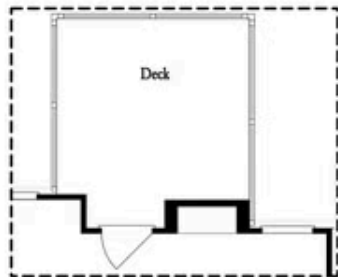
CONTACT OUR COMMUNITY SALES MANAGER  
Call Us @ 470.248.2103



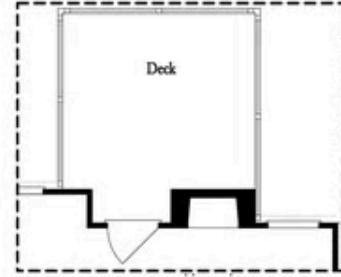
*Opt. Screened Porch*



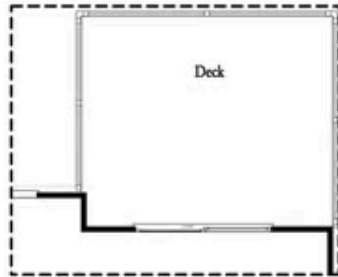
*Opt. Covered Porch*



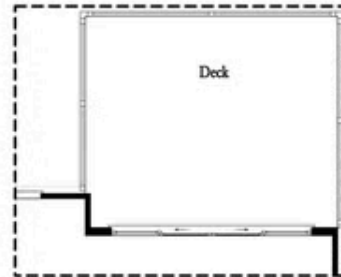
*Opt. Linear Fireplace*



*Opt. Fireplace*



*Opt. 8' Slider Door*

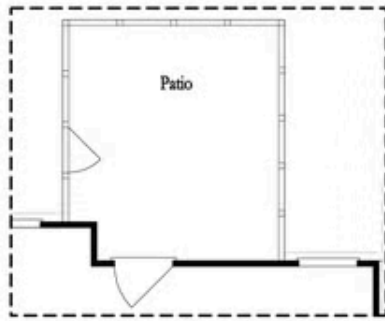


*Opt. 12' Slider*

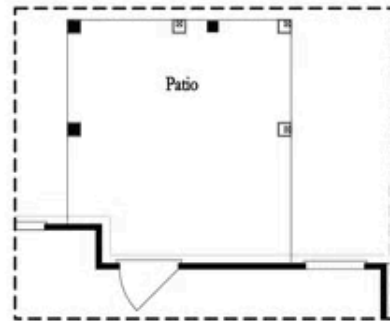
OPTIONS  
FIRST FLOOR

Want to Know More  
About This Home?

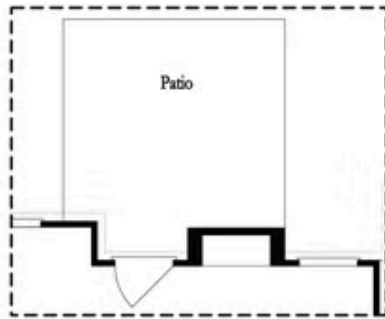
CONTACT OUR COMMUNITY SALES MANAGER  
Call Us @ 470.248.2103



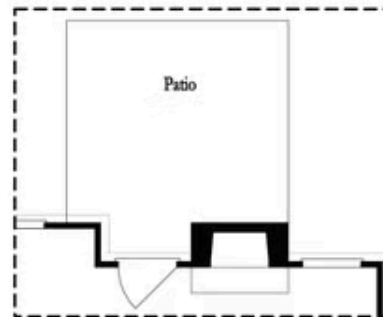
Opt. Screened Patio



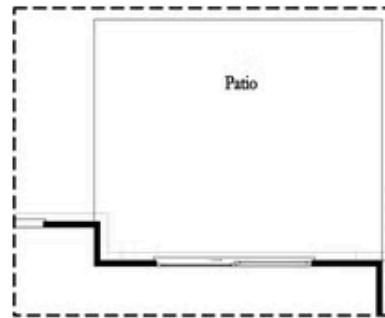
Opt. Coverd Patio



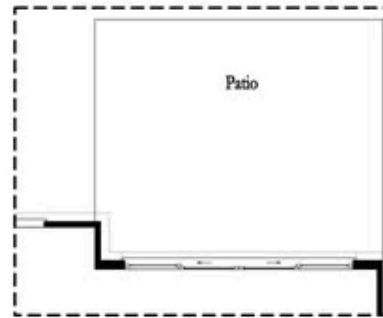
Opt. Linear Fireplace



Opt. Fireplace



Opt. 8 Foot Slider Door

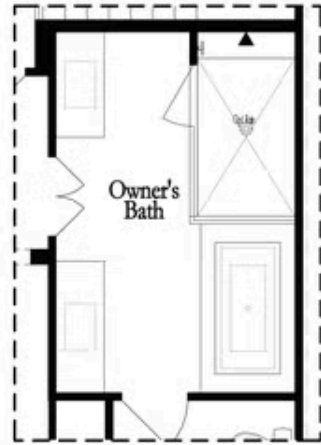


Opt. 12 Foot Slider Door

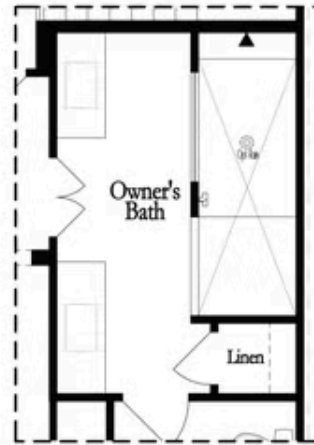
Main Level Options

Want to Know More  
 About This Home?

CONTACT OUR COMMUNITY SALES MANAGER  
 Call Us @ 470.248.2103

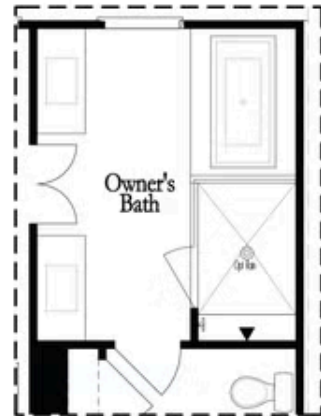


Opt. Shower/Tub



Opt. Walk-Through Shower

Owner's Front - Options



Opt. Shower/Tub



Opt. Walk-Through Shower

Owner's Rear - Options

Want to Know More  
 About This Home?

CONTACT OUR COMMUNITY SALES MANAGER  
 Call Us @ 470.248.2103