



PRICED AT
\$632,150

 2010 Sq Ft

 3 Beds

 2.5 Baths

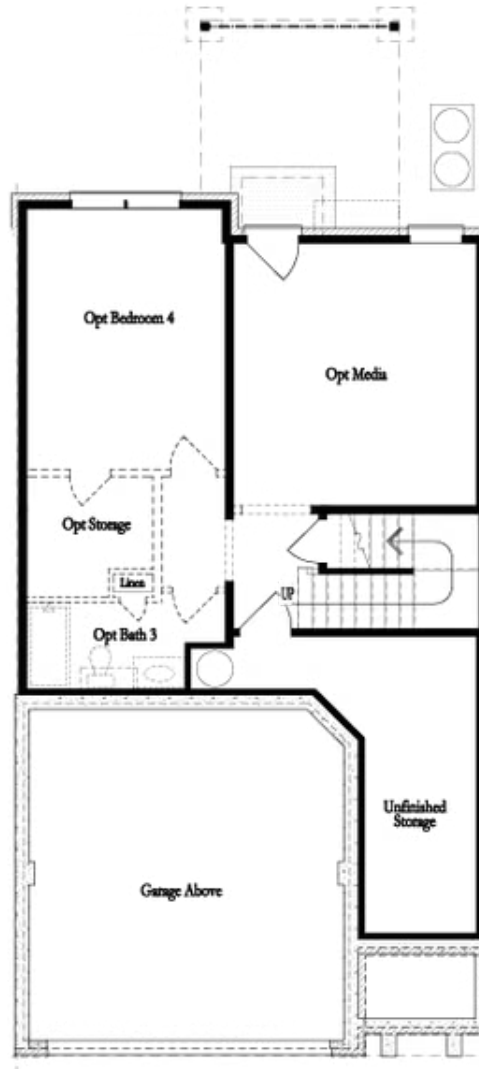
 2 Car Garage

 3.0 Story

~~~ Season of Savings ~~~ Build your Savings and Unwrap the Joy of a New Home with \$30k Promotion which can be applied towards a price reduction, upgraded appliances, closing cost, Rate-Buy down and more- giving you the flexibility to save where it matters most. Ends December 31, 2025. Discover The Stockton by The Providence Group. MOVE-IN-READY. - ONLY 3 STOCKTONS REMAIN! - Where Luxury Meets Livability. Step into the Stockton, a townhome that redefines modern living with its spacious design, upscale finishes, and thoughtful layout. From the moment you enter, you'll feel the difference this is more than just a home, it's a lifestyle upgrade. The heart of the Stockton is its expansive kitchen and family room with quartzite surround gas fireplace, perfect for entertaining or relaxing in style. Featuring warm, clean tones, quartz countertops, a single-bowl stainless steel sink, GE stainless steel appliances, and a designer tile backsplash, this kitchen is both stunning and functional a true chef's dream. Step outside to your large, covered deck, ideal for hosting gatherings or enjoying quiet mornings with coffee and fresh air. Upstairs, retreat to the luxurious Owner's Suite, a peaceful haven designed for rest and rejuvenation. Pamper yourself in the ...

**Want to Know More  
About This Home?**

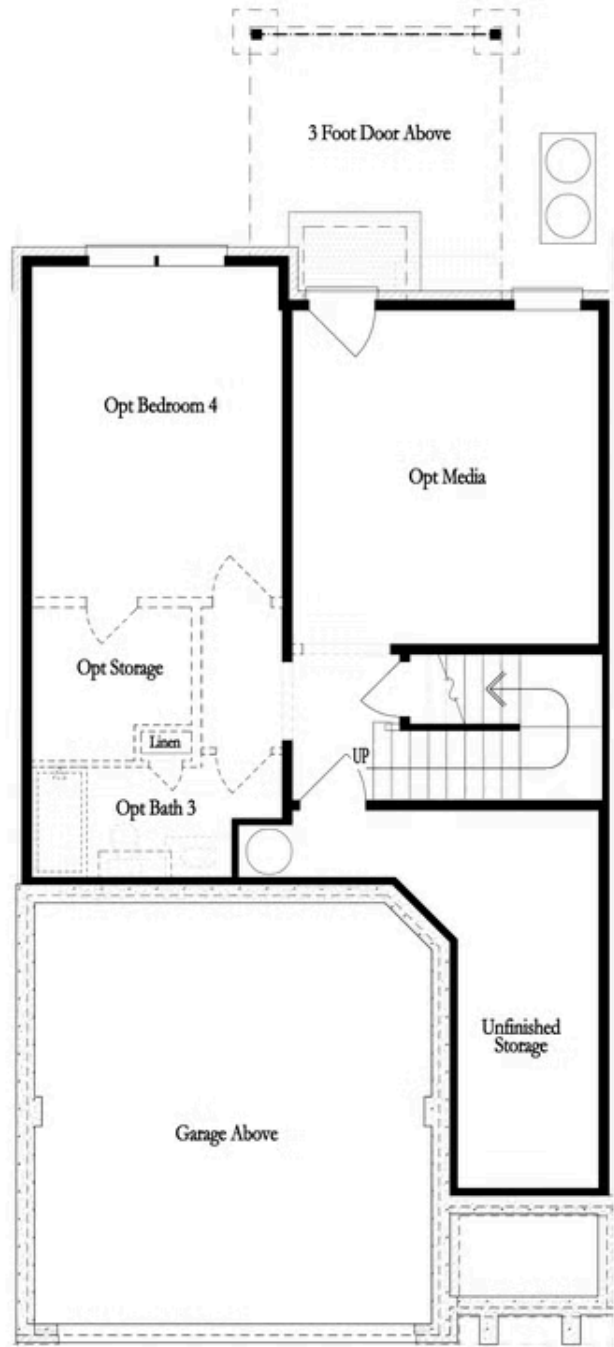
CONTACT OUR COMMUNITY SALES MANAGER  
Call Us @ 470.248.2103



**Unfinished Basement**

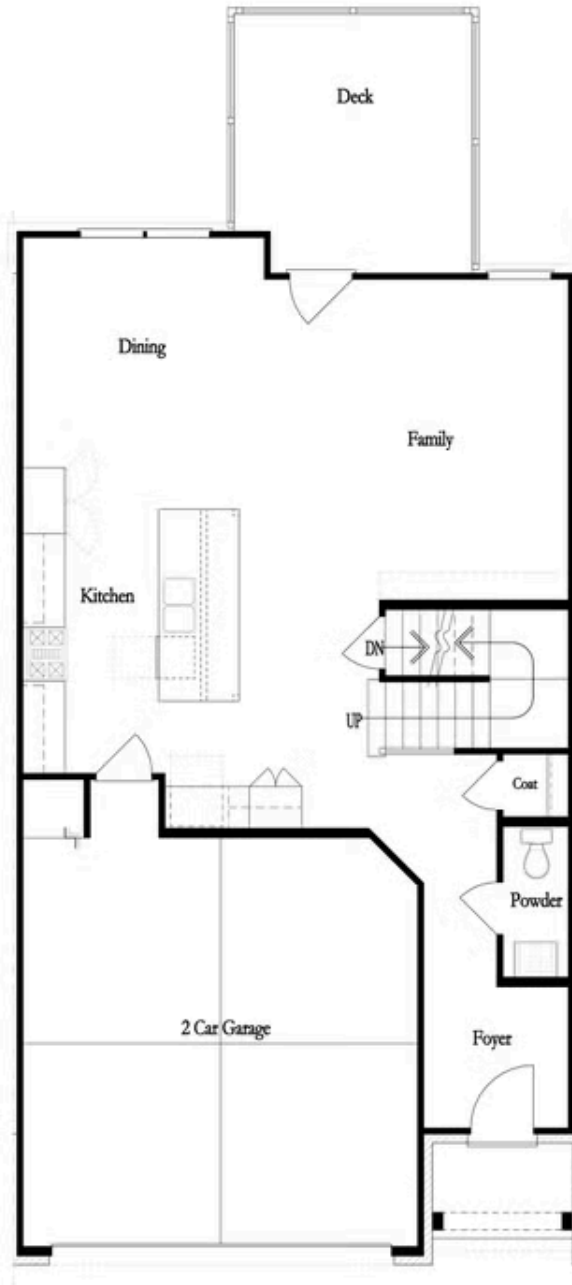
**Want to Know More  
About This Home?**

CONTACT OUR COMMUNITY SALES MANAGER  
Call Us @ 470.248.2103



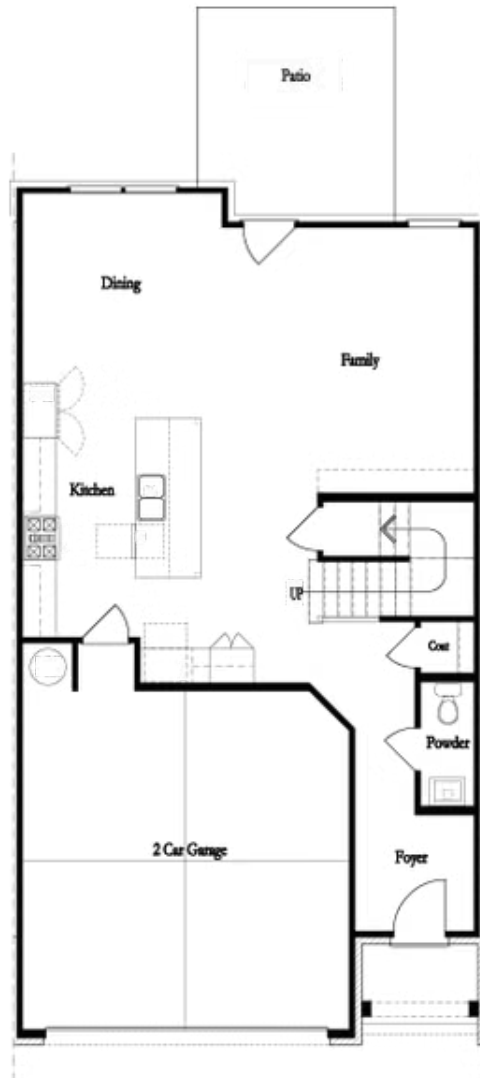
Want to Know More  
About This Home?

CONTACT OUR COMMUNITY SALES MANAGER  
Call Us @ 470.248.2103



Want to Know More  
About This Home?

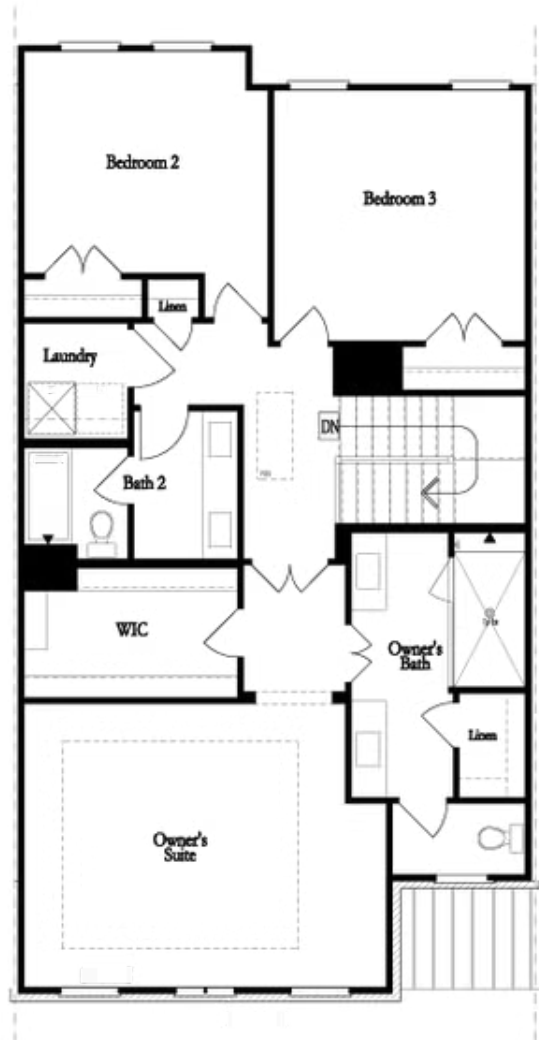
CONTACT OUR COMMUNITY SALES MANAGER  
Call Us @ 470.248.2103



**First Floor**

**Want to Know More  
About This Home?**

CONTACT OUR COMMUNITY SALES MANAGER  
Call Us @ 470.248.2103

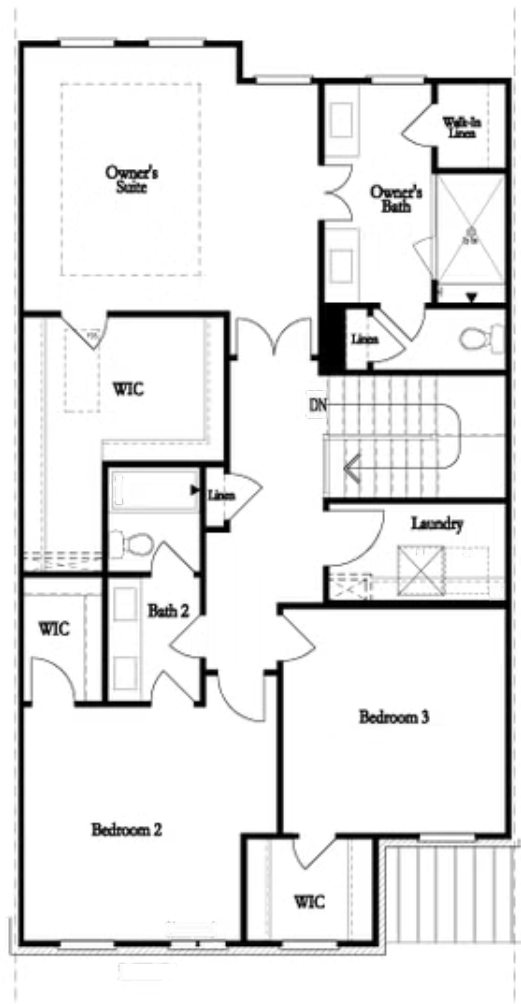


Second Floor  
(Owner's Front)

Elevations G, H, JI, J3 & L

Want to Know More  
About This Home?

CONTACT OUR COMMUNITY SALES MANAGER  
Call Us @ 470.248.2103

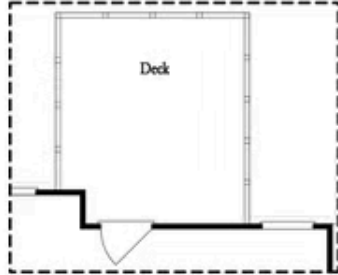


Second Floor  
(Owner's Rear)

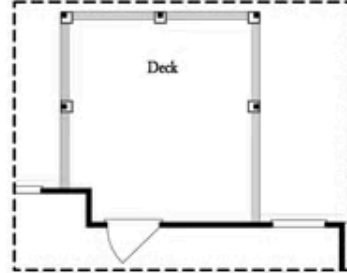
Elevations G, H, JI, J3 & L

Want to Know More  
About This Home?

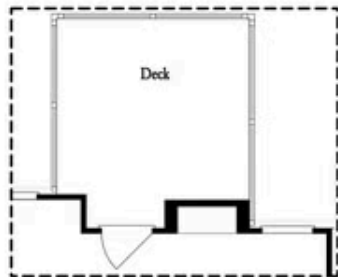
CONTACT OUR COMMUNITY SALES MANAGER  
Call Us @ 470.248.2103



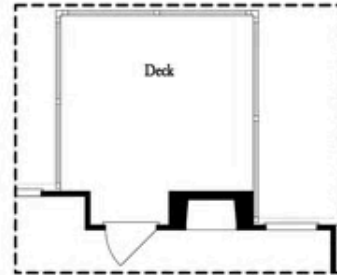
*Opt. Screened Porch*



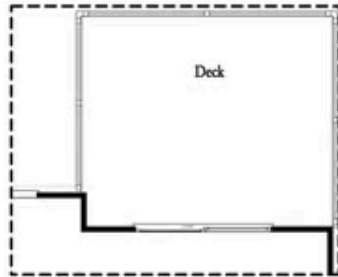
*Opt. Covered Porch*



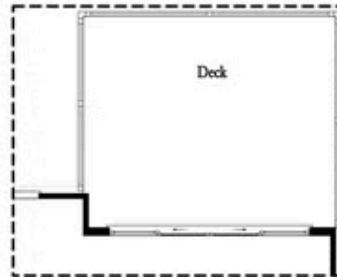
*Opt. Linear Fireplace*



*Opt. Fireplace*



*Opt. 8' Slider Door*

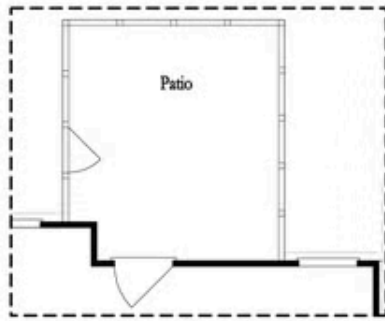


*Opt. 12' Slider*

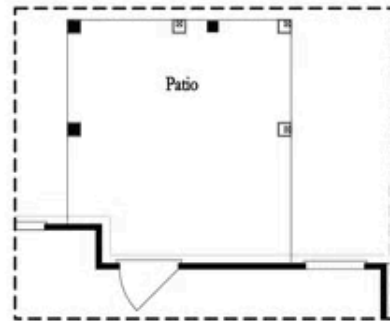
OPTIONS  
FIRST FLOOR

Want to Know More  
About This Home?

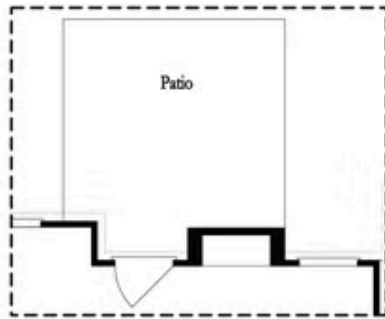
CONTACT OUR COMMUNITY SALES MANAGER  
Call Us @ 470.248.2103



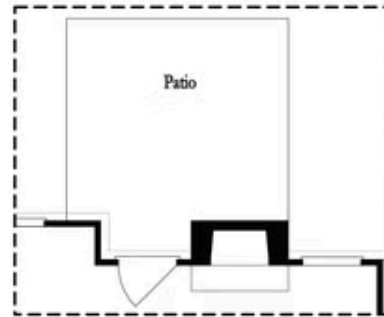
Opt. Screened Patio



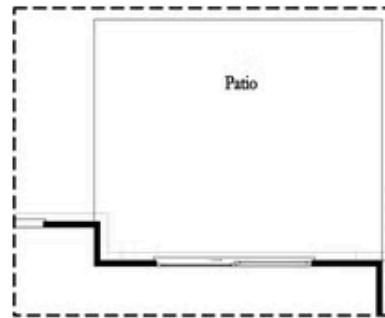
Opt. Coverd Patio



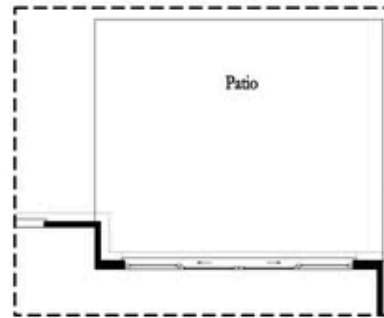
Opt. Linear Fireplace



Opt. Fireplace



Opt. 8 Foot Slider Door

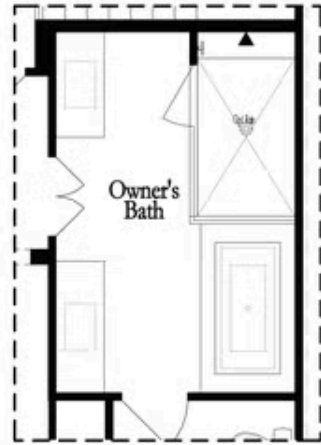


Opt. 12 Foot Slider Door

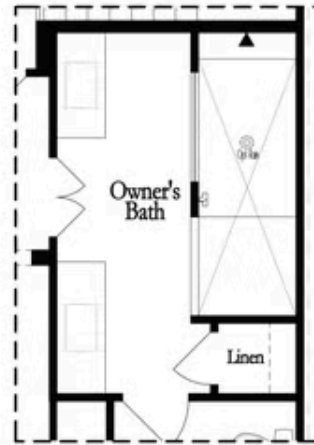
Main Level Options

Want to Know More  
 About This Home?

CONTACT OUR COMMUNITY SALES MANAGER  
 Call Us @ 470.248.2103

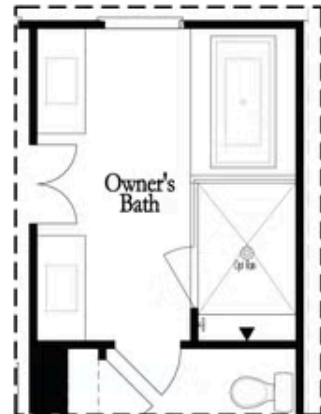


Opt. Shower/Tub

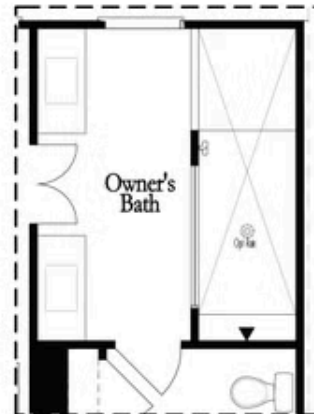


Opt. Walk-Through Shower

Owner's Front - Options



Opt. Shower/Tub



Opt. Walk-Through Shower

Owner's Rear - Options

Want to Know More  
 About This Home?

CONTACT OUR COMMUNITY SALES MANAGER  
 Call Us @ 470.248.2103