



PRICED AT
\$633,400

 2010 Sq Ft

 3 Beds

 2.5 Baths

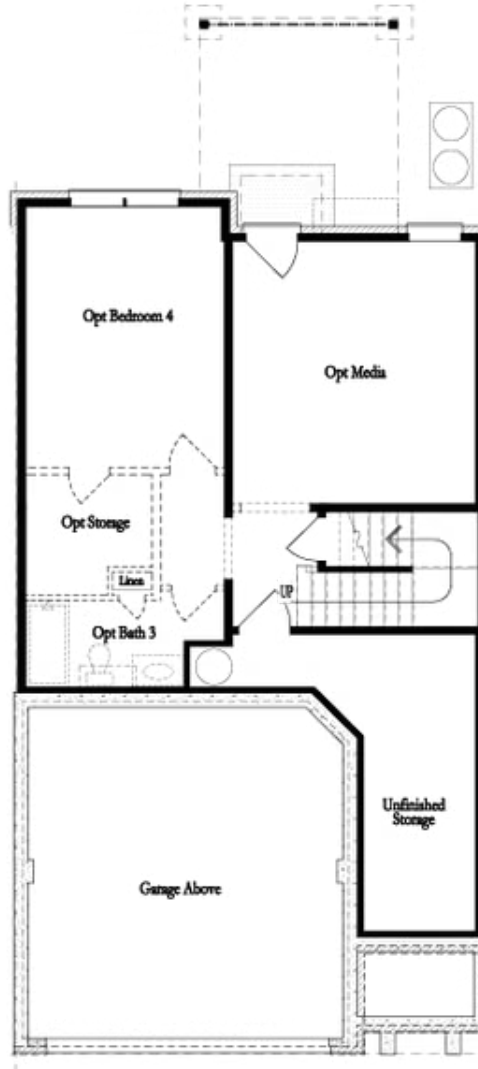
 2 Car Garage

 3.0 Story

~~~ New Year, New Home ~~~ Enjoy \$35,000 Promotion on contracts written by end of January. Promotion can be applied towards a price reduction, closing costs, rate buydown and more giving you the flexibility to save where it matters most. Ends January 31, 2026. Discover The Stockton by The Providence Group. MOVE IN READY- ONLY 2 STOCKTONS REMAIN! - Welcome to THE PROVIDENCE GROUP's Evanshire Community just moments from the Downtown Duluth happenings. This 2-story townhome with BACK YARD awaits your arrival through our GATED entrance. Come on into your humble adobe through your private foyer and when turning the corner, your show stopping OPEN CONCEPT LIVING space is there inviting friends and family to the fun. Drop off the groceries from the garage right onto your HUGE ISLAND with quartz countertops where dinner or breakfast can be served for a party of 4! GE Stainless Steel Profile appliances for cooking up a storm during the holidays. Don't miss a moment of the big game when preparing meals in your kitchen because the view to the Family Room is just ahead. Netflix & Chill after enjoying dinner in your Dining space where a round or square table will fit just ...

**Want to Know More  
About This Home?**

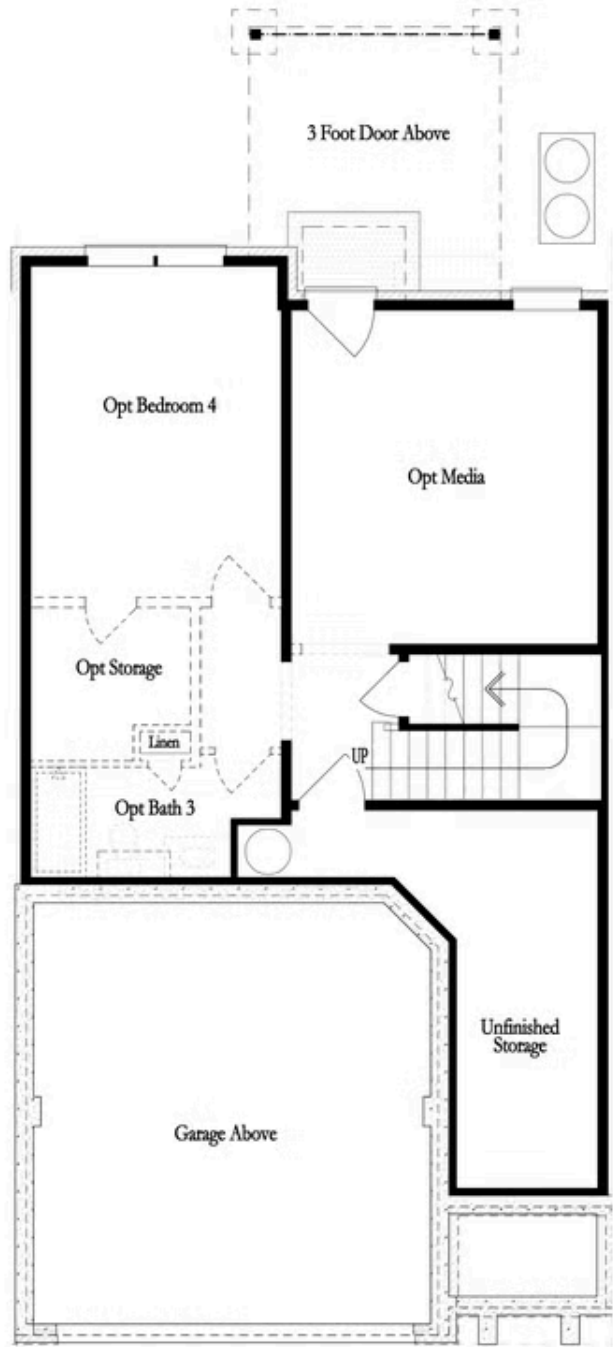
CONTACT OUR COMMUNITY SALES MANAGER  
Call Us @ 470.248.2103



**Unfinished Basement**

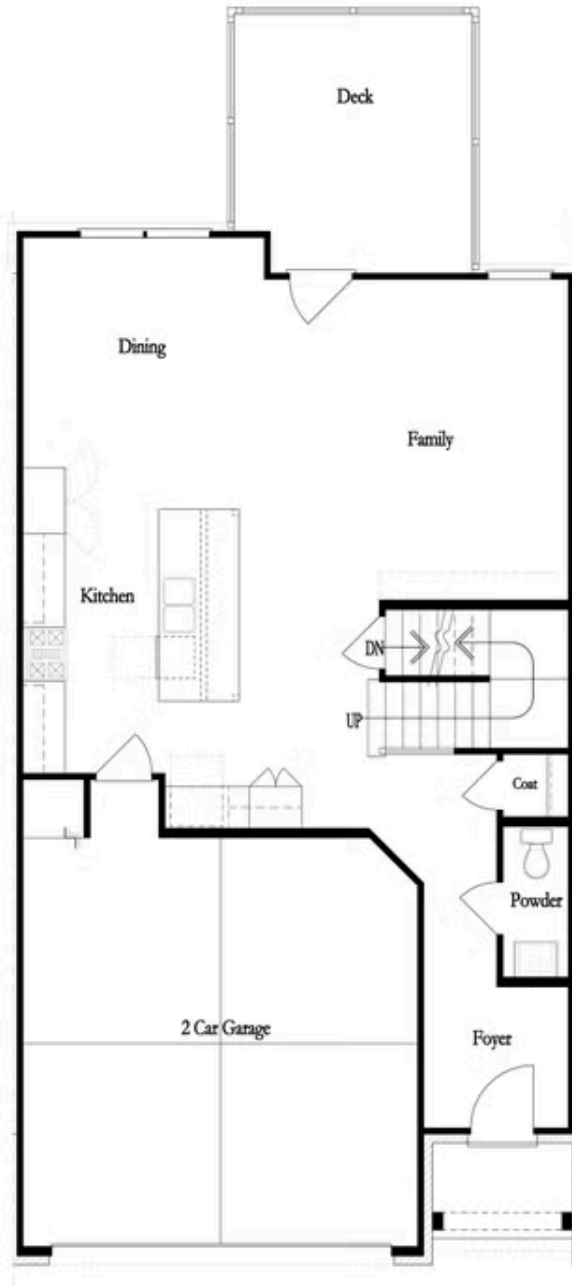
**Want to Know More  
About This Home?**

CONTACT OUR COMMUNITY SALES MANAGER  
Call Us @ 470.248.2103



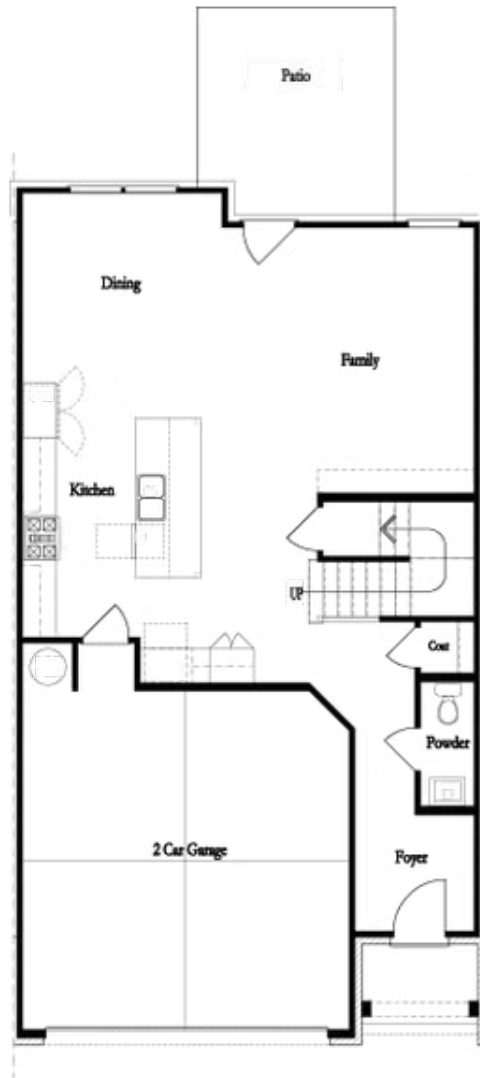
Want to Know More  
About This Home?

CONTACT OUR COMMUNITY SALES MANAGER  
Call Us @ 470.248.2103



Want to Know More  
About This Home?

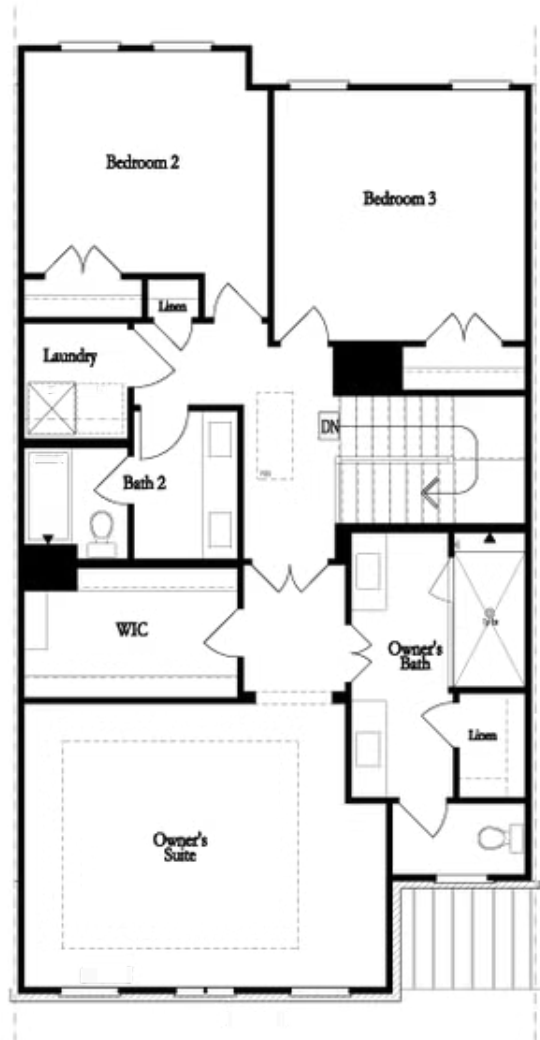
CONTACT OUR COMMUNITY SALES MANAGER  
Call Us @ 470.248.2103



**First Floor**

**Want to Know More  
About This Home?**

CONTACT OUR COMMUNITY SALES MANAGER  
Call Us @ 470.248.2103

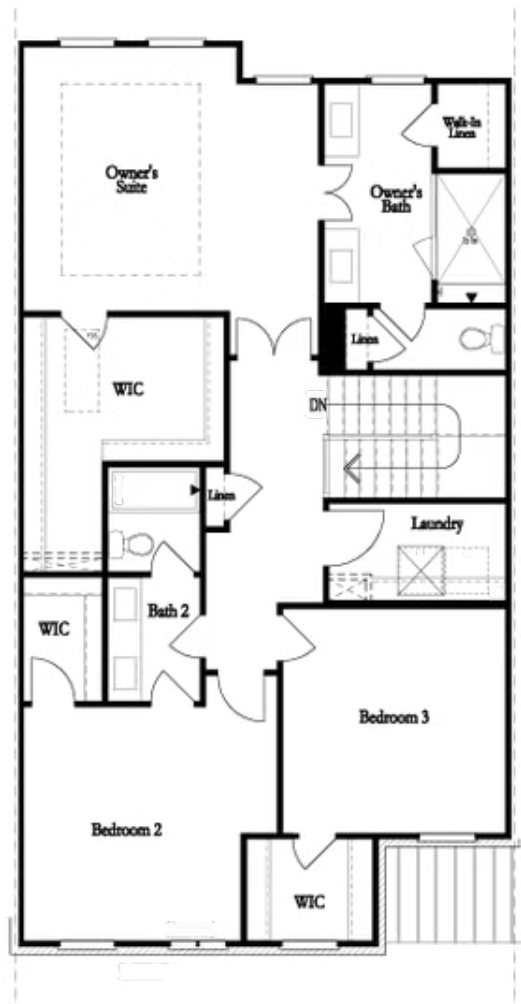


**Second Floor**  
**(Owner's Front)**

Elevations G, H, JI, J3 & L

**Want to Know More  
About This Home?**

CONTACT OUR COMMUNITY SALES MANAGER  
Call Us @ 470.248.2103

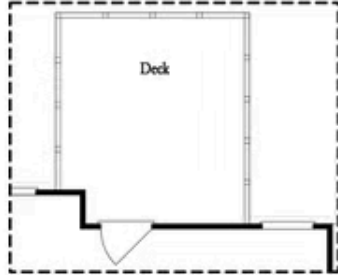


Second Floor  
(Owner's Rear)

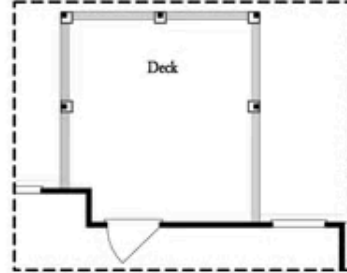
Elevations G, H, JI, J3 & L

Want to Know More  
About This Home?

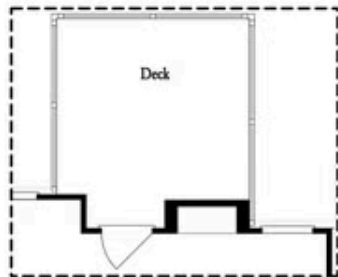
CONTACT OUR COMMUNITY SALES MANAGER  
Call Us @ 470.248.2103



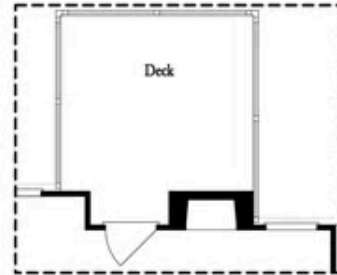
*Opt. Screened Porch*



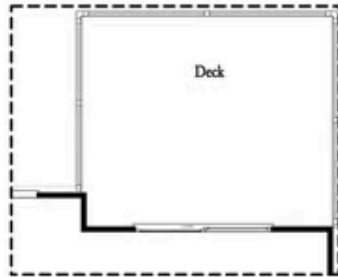
*Opt. Covered Porch*



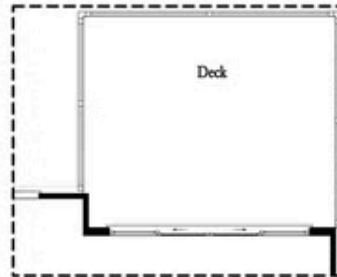
*Opt. Linear Fireplace*



*Opt. Fireplace*



*Opt. 8' Slider Door*



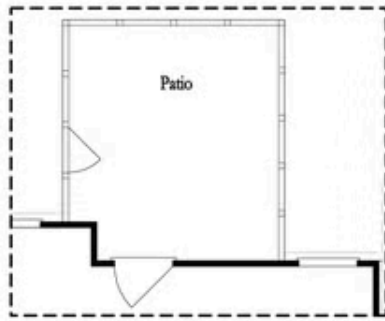
*Opt. 12' Slider*

OPTIONS  
 FIRST FLOOR

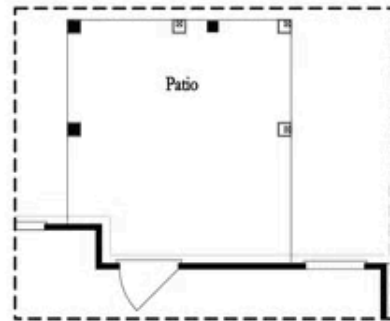
Want to Know More  
 About This Home?

CONTACT OUR COMMUNITY SALES MANAGER  
 Call Us @ 470.248.2103

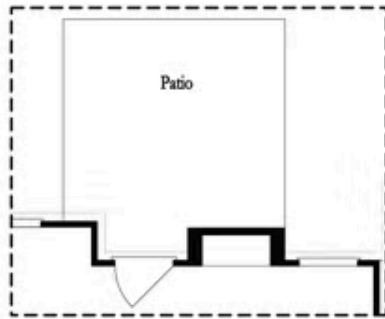




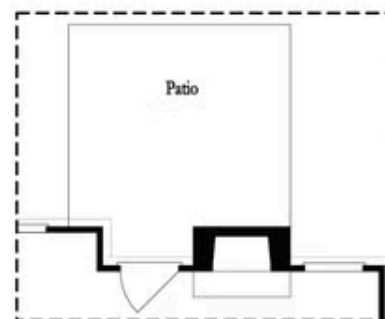
Opt. Screened Patio



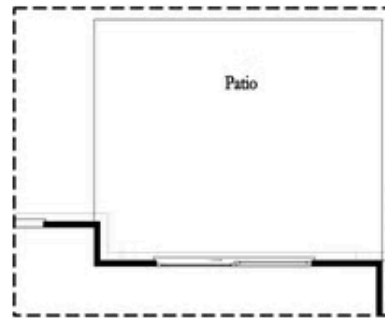
Opt. Coverd Patio



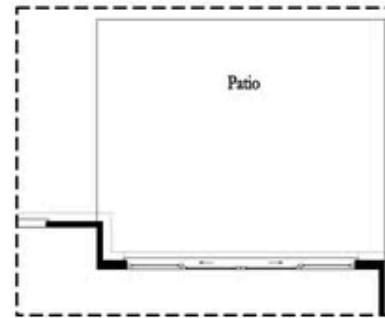
Opt. Linear Fireplace



Opt. Fireplace



Opt. 8 Foot Slider Door

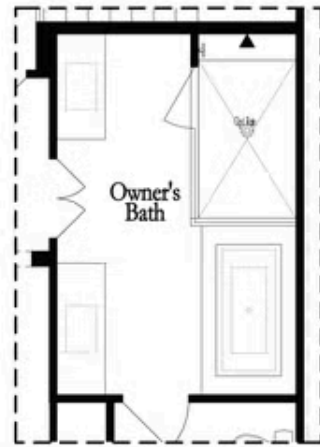


Opt. 12 Foot Slider Door

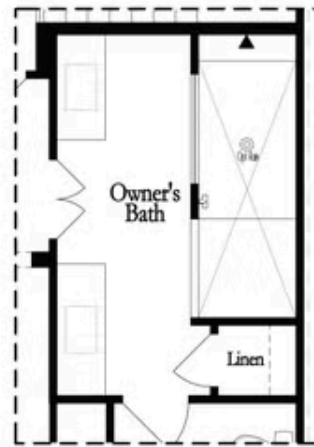
Main Level Options

Want to Know More  
 About This Home?

CONTACT OUR COMMUNITY SALES MANAGER  
 Call Us @ 470.248.2103

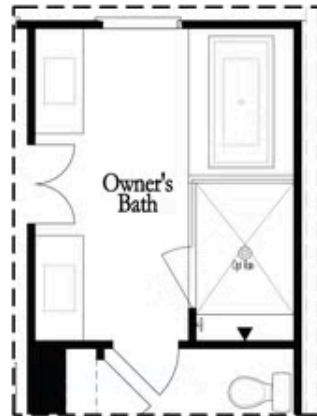


Opt. Shower/Tub



Opt. Walk-Through Shower

Owner's Front - Options



Opt. Shower/Tub



Opt. Walk-Through Shower

Owner's Rear - Options

Want to Know More  
About This Home?

CONTACT OUR COMMUNITY SALES MANAGER  
Call Us @ 470.248.2103