



PRICED AT
\$938,175

 3472 Sq Ft

 5 Beds

 4.0 Baths

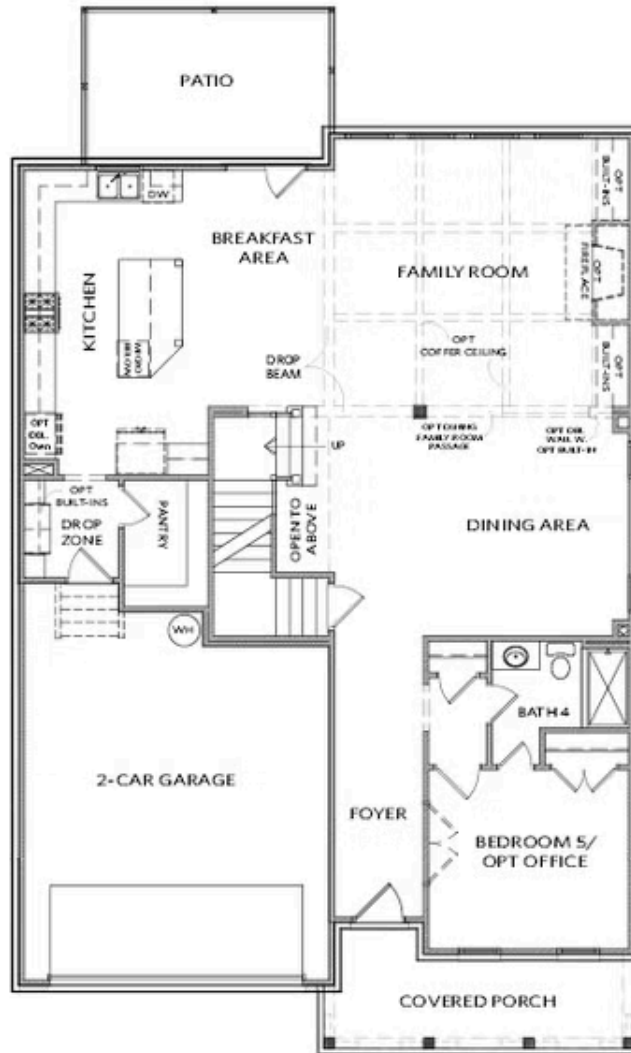
 2 Car Garage

 2.0 Story

Fabulous Fall Savings!!! \$5,000 in closing cost with preferred lender(s). TO BE BUILT HOME on unfinished terrace level! There's still time to select your design finishes and tailor the options to fit your lifestyle ensuring to make this YOUR dream home. Upon entering The Montgomery "E" from the spacious front porch, you're greeted by a full bedroom/office and full bath on the main level, providing convenience and flexibility for guests. The main living area of the home features a gorgeous dining room area that is separate yet cohesive with the open kitchen and living space. A beautiful and spacious entertainer's kitchen looks out over the family room and features an extended kitchen island. The light-filled family room offers the perfect setting for family gatherings. On the second level, the Owners Retreat is one of the best features in the home, with a Spa-like bathroom design giving you both your own side of the bathroom (HIS and HERS) featuring beautiful vanities and an AMAZING Walk-in Closet. 3 spacious secondary bedrooms and 2 additional baths on the upper level along with the laundry room is conveniently located near the bedrooms. A 2-car front entry garage compliments this lovely home! Don't miss out—schedule ...

**Want to Know More
About This Home?**

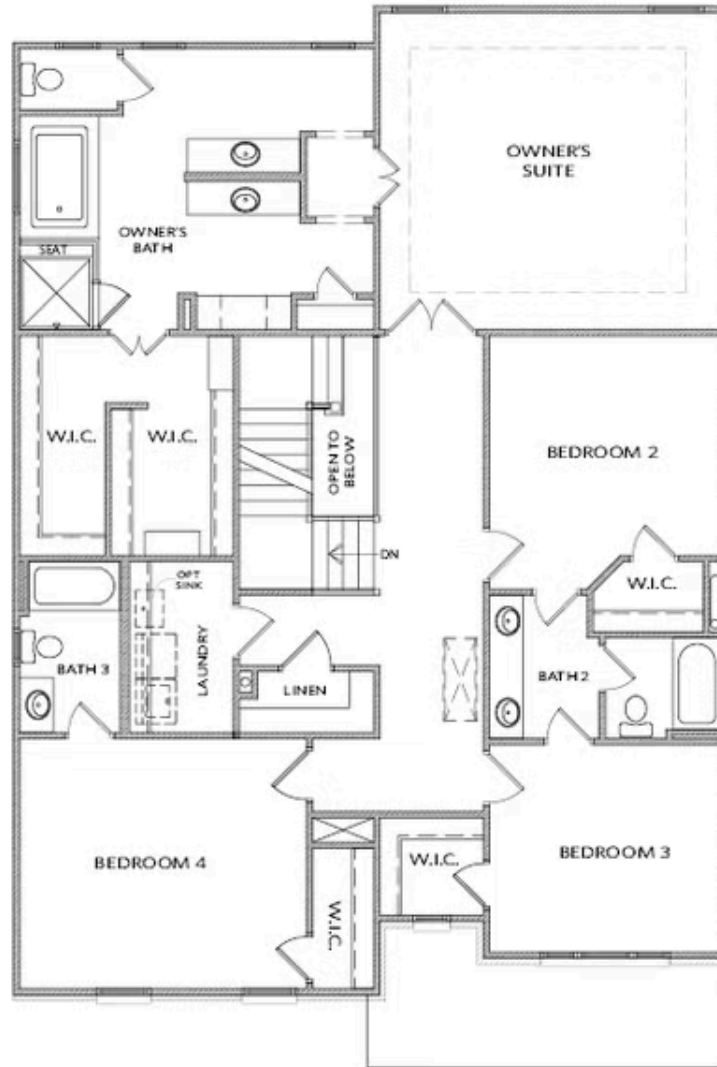
CONTACT OUR COMMUNITY SALES MANAGER
Call Us @ 470.248.2103



Elevation A & B

Want to Know More
 About This Home?

CONTACT OUR COMMUNITY SALES MANAGER
 Call Us @ 470.248.2103



Elevation A & B

Want to Know More
About This Home?

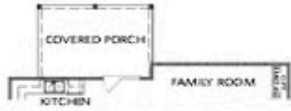
CONTACT OUR COMMUNITY SALES MANAGER
Call Us @ 470.248.2103



OPT Owner's Walk-In Shower



OPT Extended Porch & Awning



OPT Covered Porch



OPT Sunroom; OPT Patio/Deck
 OPT Fireplace on Sunroom



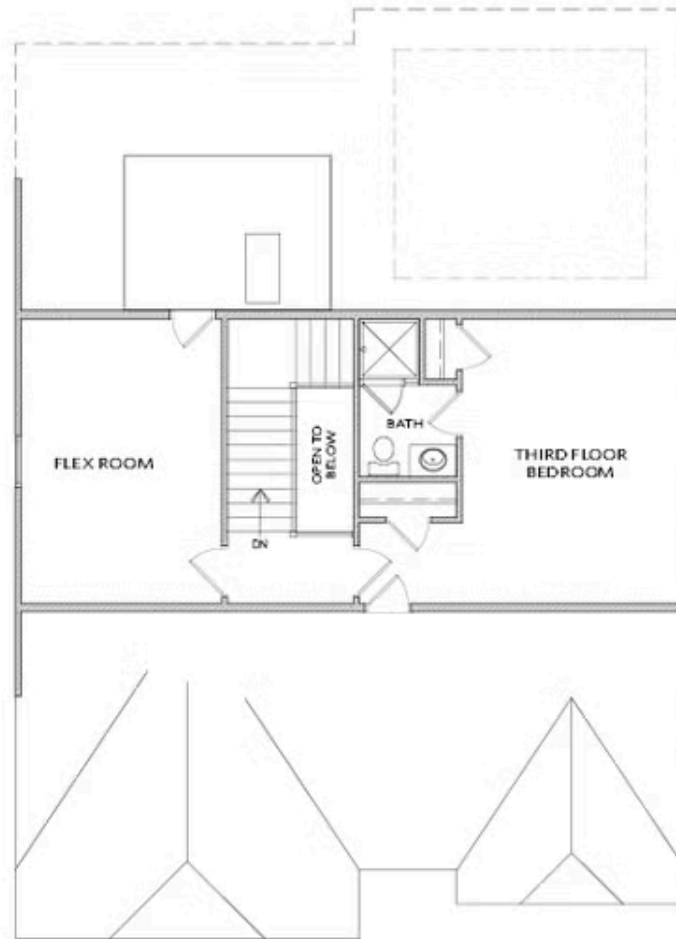
OPT Extended Kitchen



OPT Extended Kitchen w. OPT Sunroom &
 OPT Patio/Deck

Want to Know More
 About This Home?

CONTACT OUR COMMUNITY SALES MANAGER
 Call Us @ 470.248.2103



*ONLY Available on a Slab Home

Want to Know More
About This Home?

CONTACT OUR COMMUNITY SALES MANAGER
Call Us @ 470.248.2103