



PRICED AT  
**\$744,900**

 2336 Sq Ft

 3 Beds

 3.5 Baths

 2 Car Garage

 2.0 Story

SPRING INTO A NEW HOME AT EVANSHIRE! BEAUFORT "C" - TO BE BUILT HOME on finished terrace level! The Beaufort floorplan is a dream! With its finished terrace level boasting two oversized bedrooms, two bathrooms, an optional media room, and a rec room, there's no shortage of space for relaxation and entertainment. And being set on a private wooded lot adds a touch of tranquility and natural beauty to the surroundings. The master suite being located on the main floor is a definite plus, offering convenience and privacy. With a large walk-in closet and an optional sitting room overlooking wooded views, it sounds like the perfect retreat after a long day. The open floor plan is ideal for modern living, with the kitchen being a highlight. Stainless steel appliances, quartz countertops, and a large island create a stylish and functional space that's perfect for cooking and gathering. And the family room with a cozy fireplace creating a warm and inviting atmosphere with an optional sunroom opening up from the kitchen provide seamless connectivity and plenty of natural light, enhancing the overall spaciousness and comfort of the home. It's truly a haven for both everyday living and entertaining guests in style. ...

**Want to Know More  
About This Home?**

CONTACT OUR COMMUNITY SALES MANAGER  
Call Us @ 470.248.2103



Terrace Level

Want to Know More  
About This Home?

CONTACT OUR COMMUNITY SALES MANAGER  
Call Us @ 470.248.2103



Main Level

Want to Know More  
About This Home?

CONTACT OUR COMMUNITY SALES MANAGER  
Call Us @ 470.248.2103

Optional Layouts



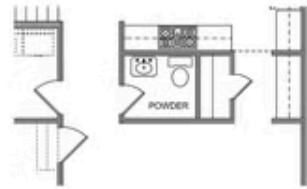
Opt Bedroom 4 & Bath 4 into Dining Room



Opt Fireplace 1 on Exterior Wall



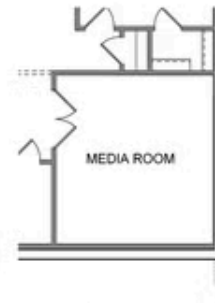
Opt Fireplace 2 on Owner's Suite Wall



Opt Butler's Pantry



Opt Covered Deck



Opt Media Room

Want to Know More  
 About This Home?

CONTACT OUR COMMUNITY SALES MANAGER  
 Call Us @ 470.248.2103

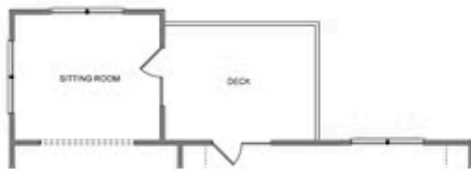
Optional Porch  
Layouts



Opt Covered Porch 2 & Covered Porch 3



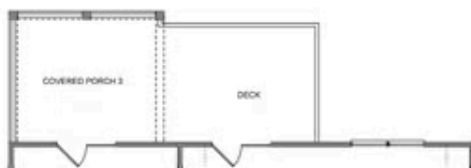
Opt Sunroom & Sitting Room



Opt Sitting Room



Opt Sunroom



Opt Covered Porch 3



Opt Covered Porch 2

Want to Know More  
About This Home?

CONTACT OUR COMMUNITY SALES MANAGER  
Call Us @ 470.248.2103