



PRICED AT  
**\$666,685**

 2676 Sq Ft

 4 Beds

 3.5 Baths

 2 Car Garage

 3.0 Story

New Year, New Home, New You! Elevate your life in 2024 with a new home by The Providence Group. New construction one mile from downtown Duluth. You will feel the excitement as soon as you are greeted by one of the best front porches in the community. The front porch will be your happy place. Step inside a beautiful foyer as you enter the front door. Immediately feel the spaciousness in this open floorplan. The family room is at the rear of the main floor and features a beautiful shiplap wrapped fireplace with a stained box beam mantle. There is a nook right off family room - perfect for a computer center. In the center of the home, you have an open dining room that is perfect for family gatherings. The kitchen has a crisp clean palette with stacked white cabinets to the ceiling, 3x12 subway tile in a herringbone pattern, gorgeous quartz countertops and matte black faucet and hardware. Enjoy a nightcap on your rear deck with enough room to grill plus a large outdoor table with seating. The owner's bedroom is located upstairs and has a giant walk-in closet and tray ceiling. The owner's bath has a separate ...

Want to Know More  
About This Home?

CONTACT OUR COMMUNITY SALES MANAGER  
Call Us @ 470.248.2103



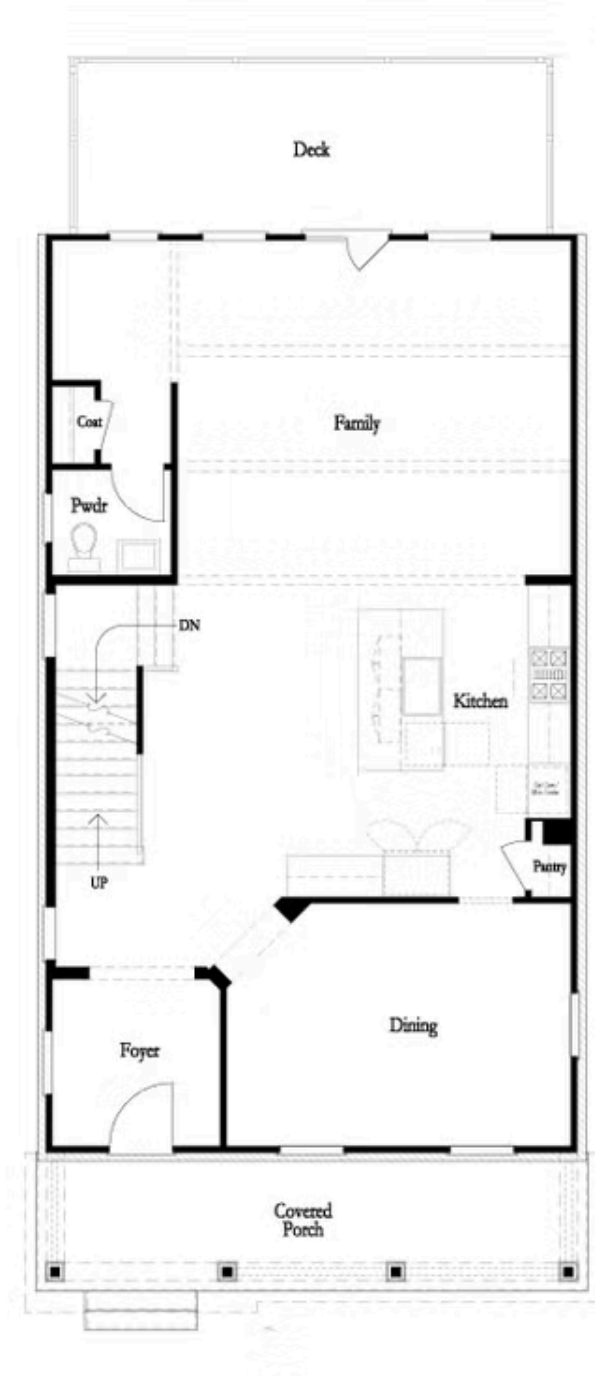
Want to Know More  
About This Home?

CONTACT OUR COMMUNITY SALES MANAGER  
Call Us @ 470.248.2103



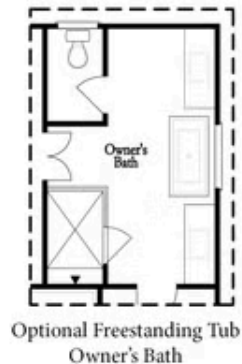
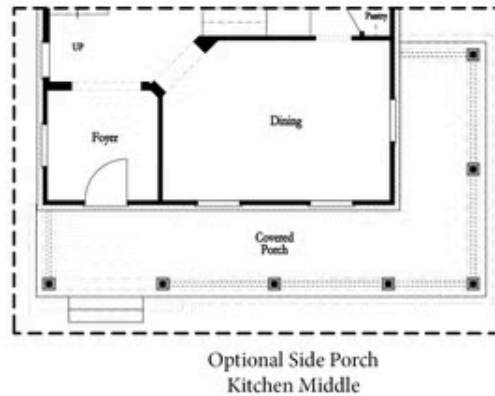
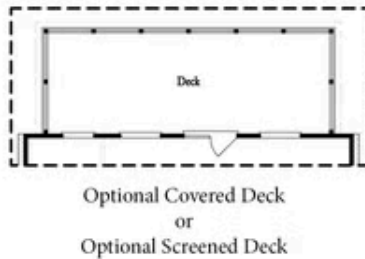
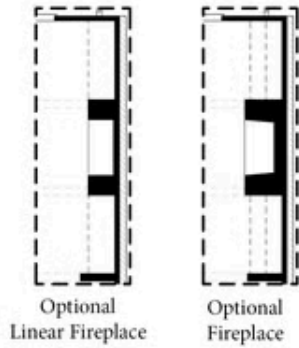
Want to Know More  
About This Home?

CONTACT OUR COMMUNITY SALES MANAGER  
Call Us @ 470.248.2103



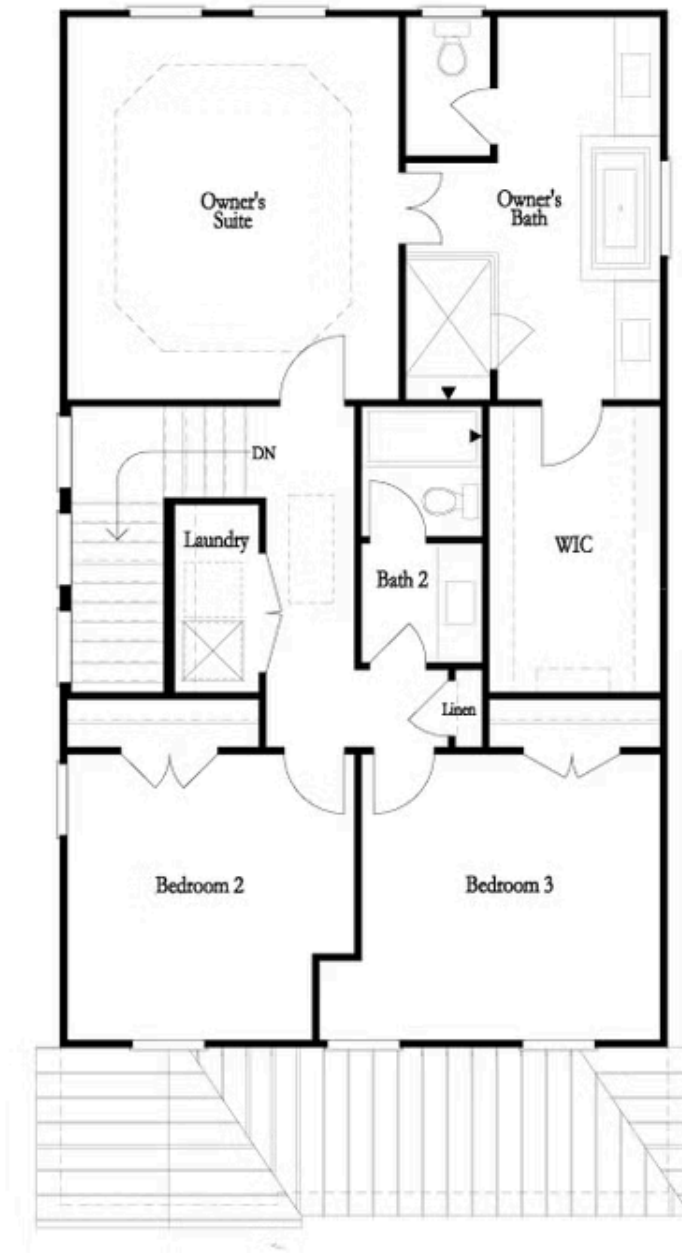
Want to Know More  
About This Home?

CONTACT OUR COMMUNITY SALES MANAGER  
Call Us @ 470.248.2103



Want to Know More  
About This Home?

CONTACT OUR COMMUNITY SALES MANAGER  
Call Us @ 470.248.2103



**Want to Know More  
About This Home?**

CONTACT OUR COMMUNITY SALES MANAGER  
Call Us @ 470.248.2103