




PRICED AT  
**\$646,925**

 2676 Sq Ft

 4 Beds

 3.5 Baths

 2 Car Garage

 3.0 Story

Quick Move In! BRAND NEW CONSTRUCTION-just one mile from downtown Duluth. You will feel the excitement as soon as you are greeted by one of the best front porches in the community. The front porch will be your happy place. Beautiful foyer when you open the front door. The kitchen separates the family room and dining room. You could make the dining room formal or casual. The kitchen will have stacked cabinets to the ceiling, giving your kitchen the most glamorous feel. Perfect office nook right off family room. Enjoy a nightcap on your rear deck. Enough room to grill plus a large outdoor table with seating. The owner's bedroom is a great size and has a giant walk-in closet. In the owner's bath, the vanities are separated by the tub and there is a separate tile shower. 2 additional bedrooms upstairs with one full bath and laundry. So many possibilities in the terrace level, great big bedroom with full bath, could easily be used as a media room. Also, a door to lead out to your side courtyard. This home has it all, 3 outdoor spaces and the best interior layout. The community pool and clubhouse are underway now. ...

**Want to Know More  
About This Home?**

CONTACT OUR COMMUNITY SALES MANAGER  
Call Us @ 470.248.2103



Elevation A

Want to Know More  
About This Home?

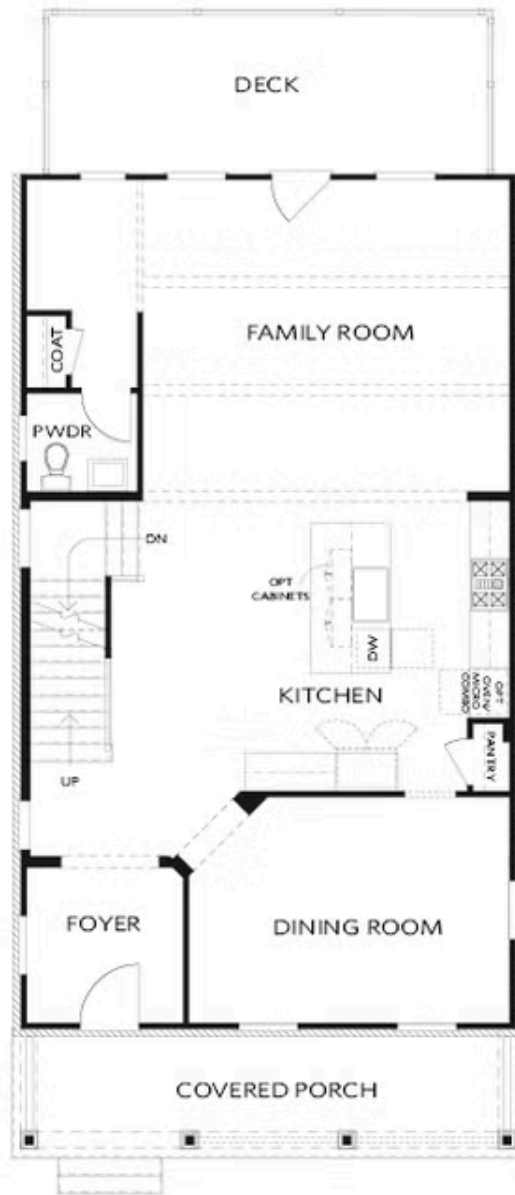
CONTACT OUR COMMUNITY SALES MANAGER  
Call Us @ 470.248.2103



Elevation A

Want to Know More  
About This Home?

CONTACT OUR COMMUNITY SALES MANAGER  
Call Us @ 470.248.2103



Elevation A

Want to Know More  
About This Home?

CONTACT OUR COMMUNITY SALES MANAGER  
Call Us @ 470.248.2103



Elevation A

Want to Know More  
About This Home?

CONTACT OUR COMMUNITY SALES MANAGER  
Call Us @ 470.248.2103



OPT Linear Fireplace

OPT Fireplace



OPT Freestanding Tub - Owner's Bath



OPT Screened or Covered Deck



OPT Shower - Terrace Bath



OPT Side Porch - Kitchen Front  
 \*Per Lot Fit



OPT Side Porch - Kitchen Middle  
 \*Per Lot Fit

Want to Know More  
 About This Home?

CONTACT OUR COMMUNITY SALES MANAGER  
 Call Us @ 470.248.2103