



PRICED AT  
**\$709,625**

 2483 Sq Ft

 4 Beds

 3.5 Baths

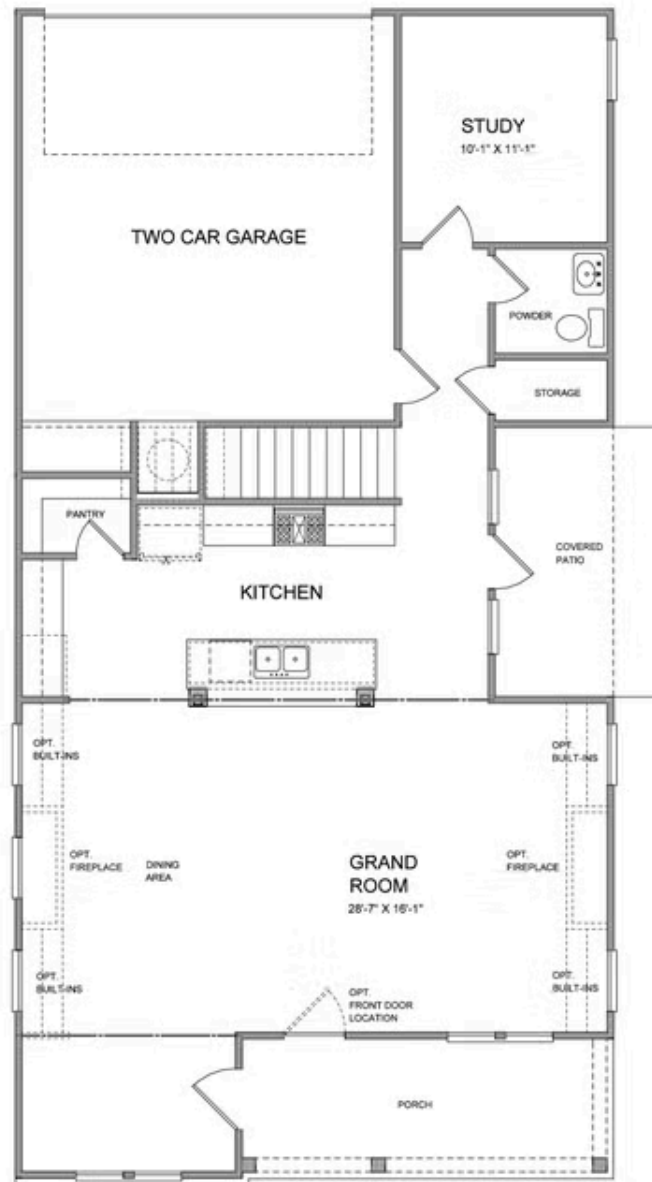
 2 Car Garage

 2.0 Story

~~~ FALL INTO SAVINGS ~~~ \$5,000 towards closing cost with one of our Preferred Lenders. TO-BE-BUILT HOME! Bring your buyers in today so they can still finalize personal touches at our Design Studio! The Owens plan features a large covered front porch w/rear entry garage and 10' ceilings on the main floor, open kitchen into the family room making this home perfect for entertaining. On the main floor, you will find a study with an option to add a Guest Suite with Full Bath providing convenience and flexibility for guests or residents who prefer single-level living. The entertainer's kitchen is a standout feature, boasting a sizable kitchen island, GE Profile appliances, and a large walk-in pantry. For outdoor entertaining, step outside to the FENCED YARD w/side patio, just off the kitchen, provides a convenient space for outdoor dining and relaxation. Upstairs, the oversized owner's suite awaits, with an inviting double door entry. The owner's bath is sure to impress with its fabulous entryway, dual sinks, FREE STANDING TUB, and walk-in shower. Two spacious additional bedrooms and a large, walk-through second full bath with two vanities compliments the 2nd floor. The laundry room, conveniently located near the bedrooms, offers optional features ...

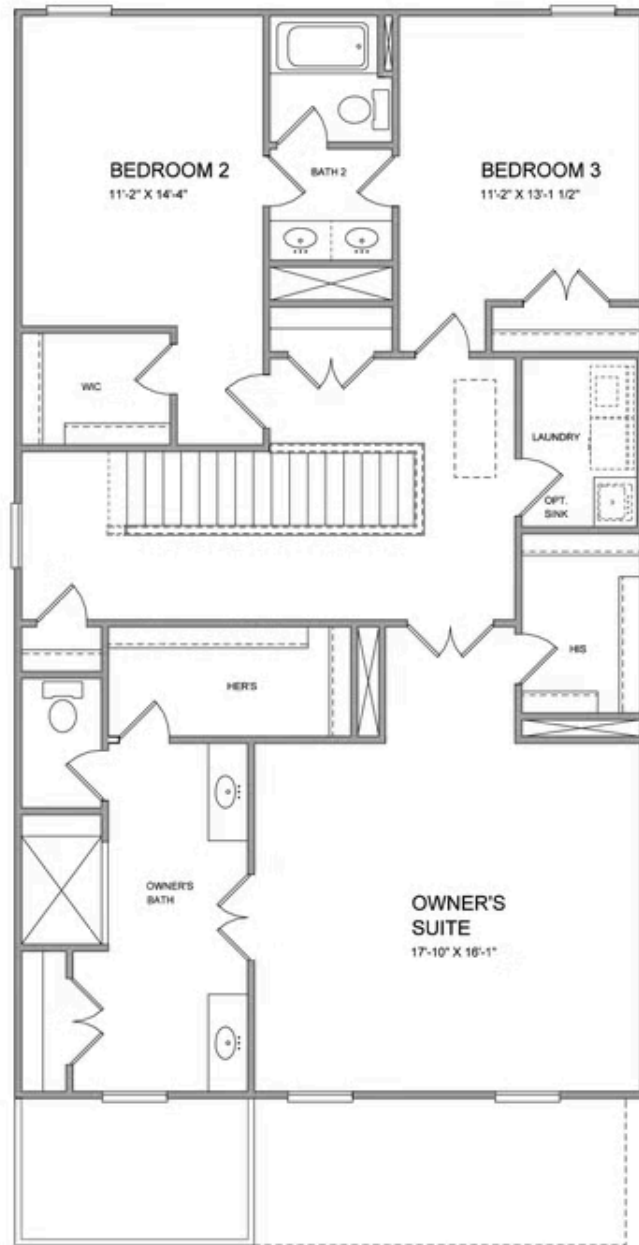
**Want to Know More  
About This Home?**

CONTACT OUR COMMUNITY SALES MANAGER  
Call Us @ 470.248.2103



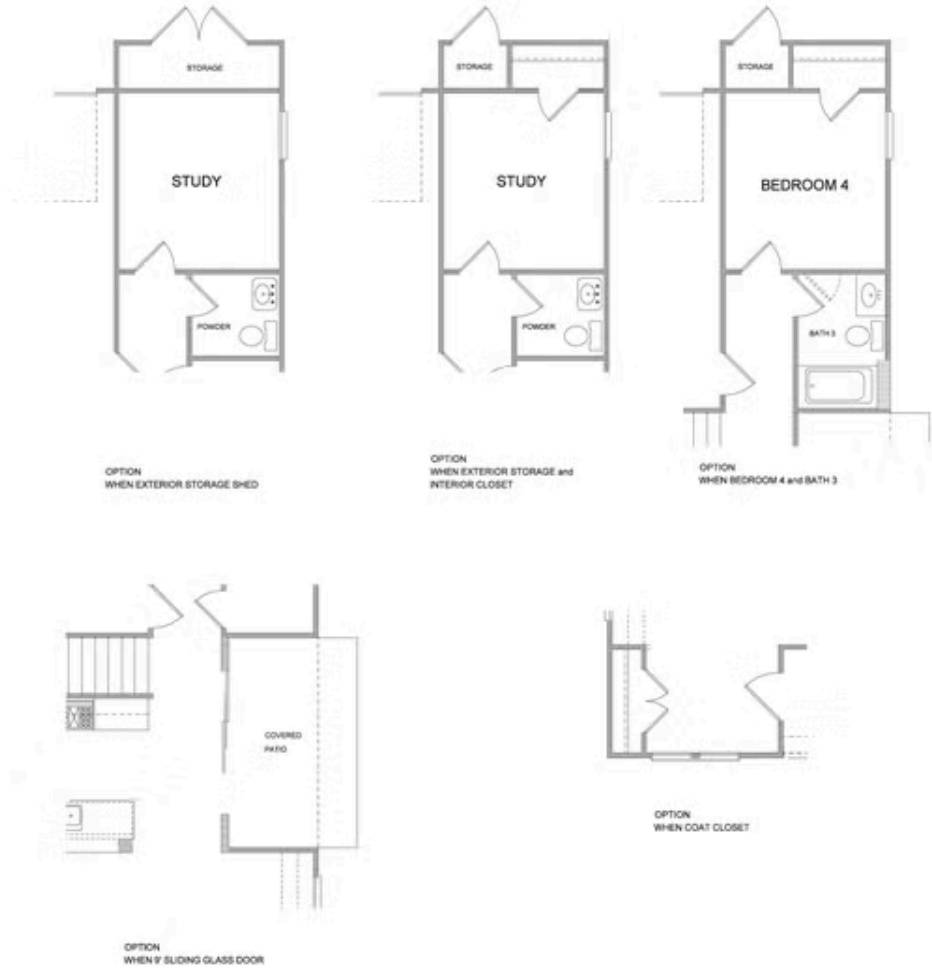
Want to Know More  
About This Home?

CONTACT OUR COMMUNITY SALES MANAGER  
Call Us @ 470.248.2103



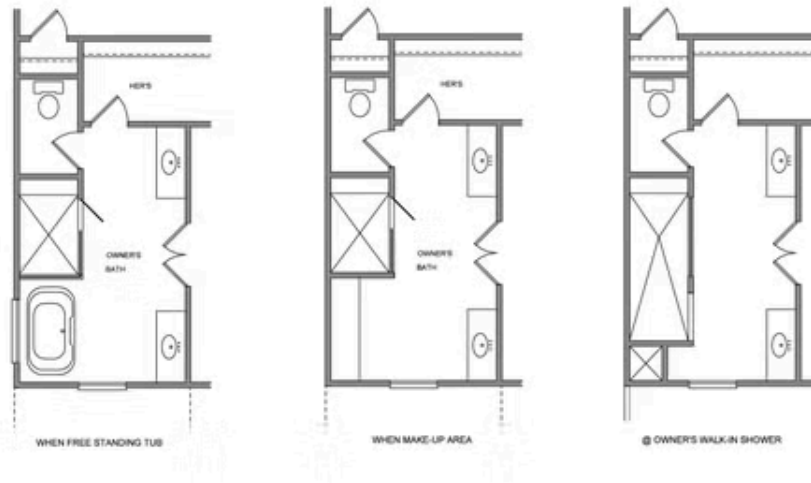
Want to Know More  
About This Home?

CONTACT OUR COMMUNITY SALES MANAGER  
Call Us @ 470.248.2103



Want to Know More  
About This Home?

CONTACT OUR COMMUNITY SALES MANAGER  
Call Us @ 470.248.2103



Want to Know More  
About This Home?

CONTACT OUR COMMUNITY SALES MANAGER  
Call Us @ 470.248.2103