




PRICED AT  
**\$547,150**

 2096 Sq Ft

 3 Beds

 3.5 Baths

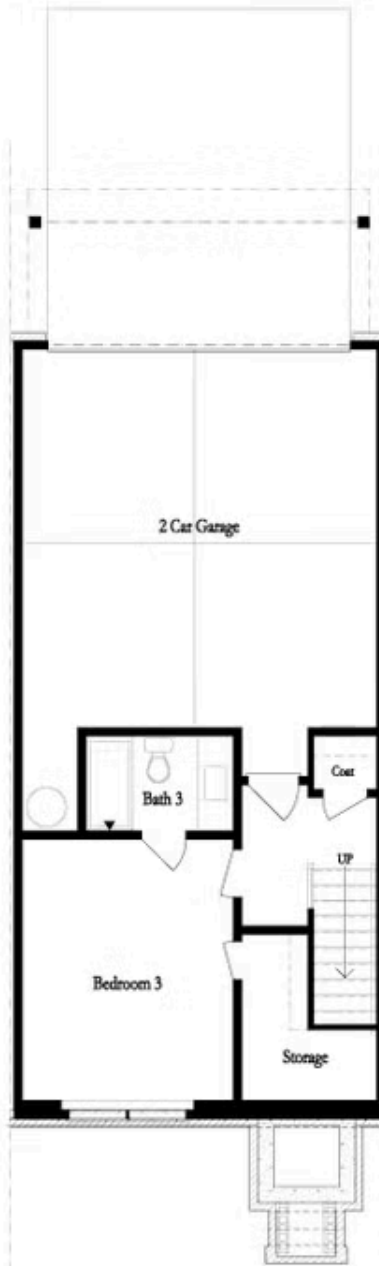
 2 Car Garage

 3.0 Story

~~~ Elevate Your Savings ~~~ Enjoy \$30,000 Promotion on contracts written by end of February. Promotion can be applied towards a price reduction, closing costs, rate buydown and more giving you the flexibility to save where it matters most. Ends February 28, 2026. \$2,500 Broker Bonus on all Contracts written in February. Discover The Freemont by The Providence Group. MOVE IN READY! Modern Luxury Meets Everyday Comfort. Every bedroom has its own private bathroom—no sharing required! Whether it's for guests, roommates, or family, everyone enjoys their own space and privacy. This home showcases the Warm Wheat Design Collection, featuring light cream cabinetry throughout paired with modern, stylish finishes for a fresh and timeless look. Step inside from the main-level entry into a welcoming foyer. Just a few steps up, you'll find yourself in the heart of the home with an expansive, open-concept main level designed for both comfort and entertainment. The gourmet kitchen boasts an L-shaped island, stainless steel appliances, quartz countertops, and a tile backsplash. It seamlessly connects to the dining and family rooms, making it perfect for hosting! Gather around the cozy fireplace and create memories. The terrace level features a spacious third bedroom with a private en-suite ...

**Want to Know More  
About This Home?**

CONTACT OUR COMMUNITY SALES MANAGER  
Call Us @ 470.248.2103



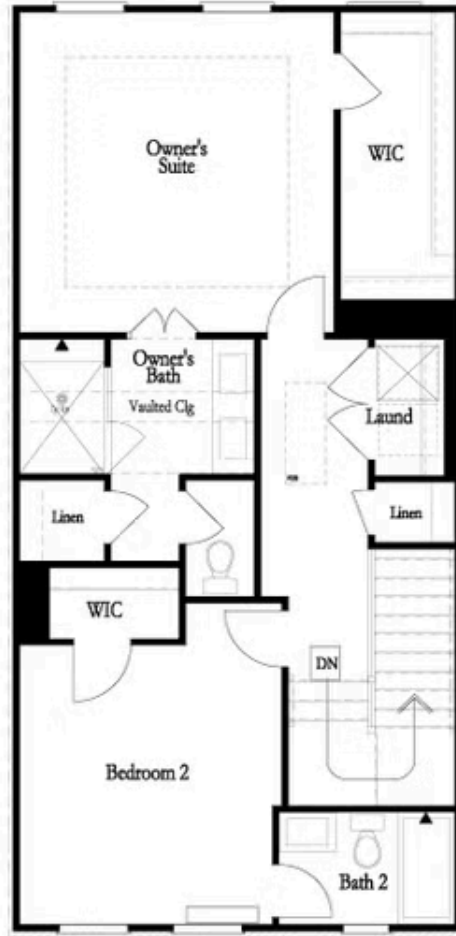
Want to Know More  
About This Home?

CONTACT OUR COMMUNITY SALES MANAGER  
Call Us @ 470.248.2103



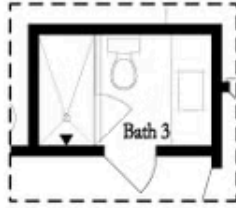
Want to Know More  
About This Home?

CONTACT OUR COMMUNITY SALES MANAGER  
Call Us @ 470.248.2103



Want to Know More  
About This Home?

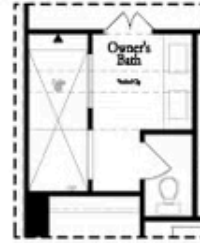
CONTACT OUR COMMUNITY SALES MANAGER  
Call Us @ 470.248.2103



OPT Terrace Shower Only  
 No Tub/Shower Combo



OPT Tub & Shower  
 in Owner's Bath



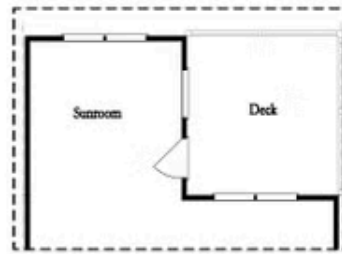
OPT Walk-Through Shower  
 in Owner's Bath



OPT Fireplace



OPT Linear Fireplace



OPT Sunroom

Want to Know More  
 About This Home?

CONTACT OUR COMMUNITY SALES MANAGER  
 Call Us @ 470.248.2103